

CARTRIDGE RELIEF VALVE 80 LPM



VMPC 80

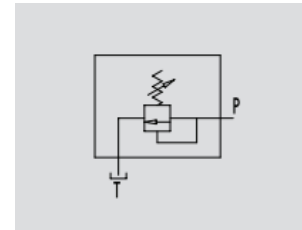
Flow Upto 80 LPM
Pressure 300 Bar

Description & Operation

The relief valve limits the maximum pressure in a circuit to the valve's setting.

When the circuit pressure reaches the setting, the valve opens and stops the circuit pressure going any higher.

Fit the valve in the appropriate cavity.



Hydraulic Symbol

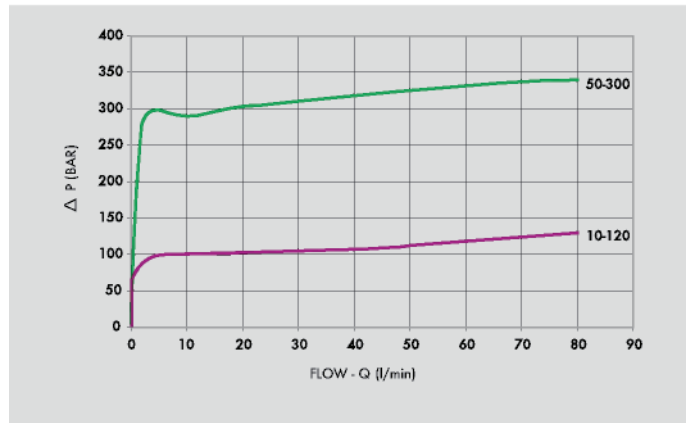
Technical Data

| | |
|------------------------------|---|
| Maximum Flow | 80 LPM |
| Maximum Pressure | 300 Bar |
| Body Material | Steel |
| Internal parts | Hardened and Ground steel |
| External Component treatment | Zn/Fe - standard (96h) / Zn/Ni (720h) |
| Oil Temperature | 50 Deg. C |
| Fluids | Mineral based or synthetics with lubricating properties |
| Viscosity | 30 cSt |
| Standard Sealing | NBR-Buna N |
| Filtration | 20/18/15 ISO 4406 (Max. Filtration admitted) |
| Orientation / Mounting | Inline |
| Weight | See Ordering details |

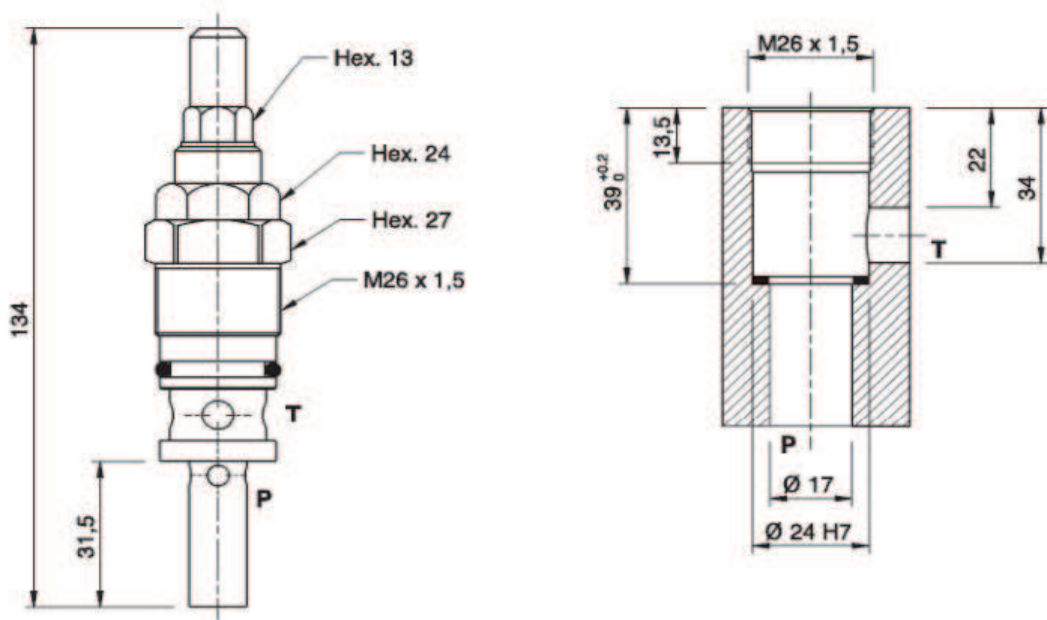
Specifications

| Type | Max.Flow | Pressure Range |
|--------------------|----------|----------------|
| | LPM | Bar |
| VMPC 80 10-120 BAR | 80 | 10-120 |
| VMPC 80 50-300 BAR | 80 | 50-300 |

 **Performance Curve**



 **Dimensional Drawing**



 **Ordering Details**

| Code | Type | Max.Flow | Weight |
|--------------|--------------------|----------|--------|
| | | LPM | Kg |
| R-VC0800/120 | VMPC 80 10-120 BAR | M26X1.5 | 0.240 |
| R-VC0800/300 | VMPC 80 50-300 BAR | M26X1.5 | 0.240 |

 **Adjustment**

| | |
|---------|--------------------------|
| CODE/V | Handknob |
| CODE/PP | Arranged for sealing cap |
| CODE/P | Sealing cap |

RELIEF VALVES