

DOUBLE OVERCENTRE VALVES FOR CLOSED CENTRE



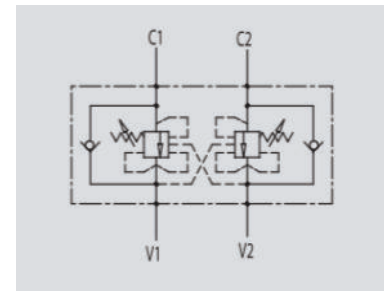
VBCD DE CC

Flow Upto 105 LPM
Pressure 350 Bar



Description & Operation

These valves are used to control the actuator movements and block it in both directions. In order to have the descent of a load under control and avoid the load's weight being carried away the valve will prevent any cavitation of the actuator. This valve is ideal when normal overcentre valves don't work properly as it's not sensitive to back pressure. They also allow the system pressure to move multiple actuators in series. Valve setting must be at least 1.3 times more than the load pressure in order to enable the valve to close even when subjected to the maximum load pressure. In-line mounting
Connect V1 and V2 to the supply, C1 and C2 to the actuator to be controlled.



Hydraulic Symbol

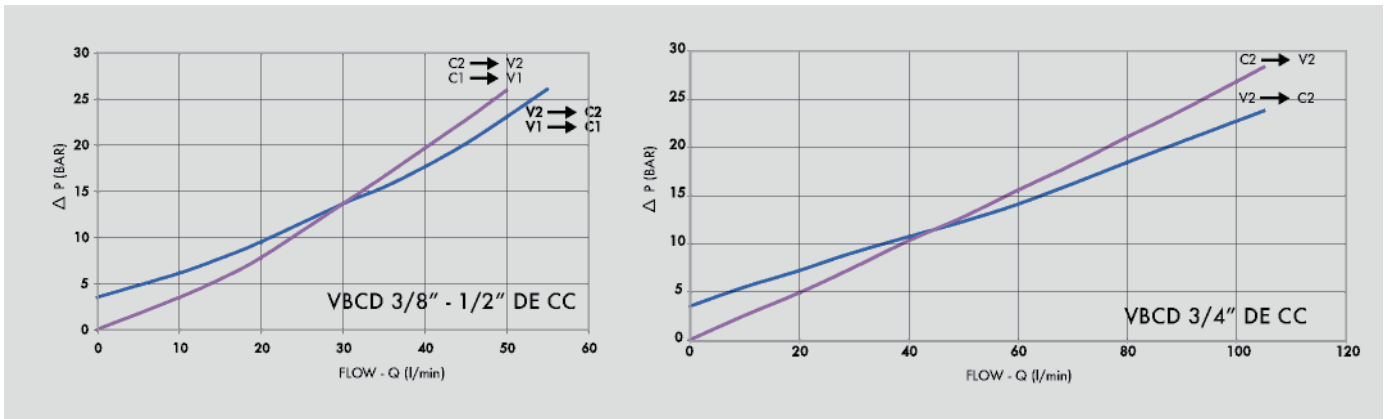
Technical Data

Maximum Flow	105 LPM
Maximum Pressure	350 Bar
Body Material	Steel
Internal parts	Hardened and Ground steel
External Component treatment	Zn/Fe - standard (96h) / Zn/Ni (720h)
Oil Temperature	50 Deg. C
Fluids	Mineral based or synthetics with lubricating properties
Viscosity	30 cSt
Standard Sealing	NBR-Buna N
Filtration	20/18/15 ISO 4406 (Max. Filtration admitted)
Orientation / Mounting	Inline
Weight	See Ordering details
Standard Pressure Setting	320 Bar

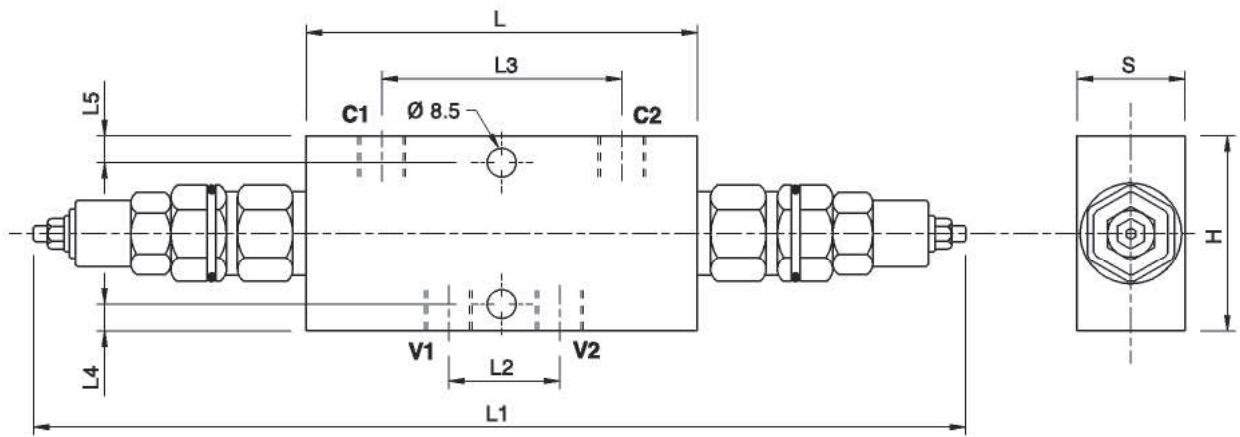
Specifications

Type	Pilot Ratio	Max.Flow	Max.Pressure
		LPM	Bar
VBCD 3/8"DE CC	1:3.1	35	350
VBCD 3/8"DE CC RP 1:8	1:8	35	350
VBCD 1/2"DE CC	1:3.1	50	350
VBCD 1/2"DE CC RP 1:8	1:8	50	350
VBCD 3/4"DE CC	1:5.5	105	350
VBCD 3/4"DE CC RP 1:8	1:8	105	350

 **Performance Curve**



 **Dimensional Drawing**



 **Ordering Details**

Code	Type	VI-V2 CI-C2	L	L1	L2	L3	L4	L5	H	S	Weight
		GAS	mm	mm	mm	mm	mm	mm	mm	mm	Kg
R- V0441	VBCD 3/8"DE CC	G 3/8"	120	288	34	73	8	8	60	30	1.902
R-V0441/RP18	VBCD 3/8"DE CC RP 1:8	G 3/8"	120	288	34	73	8	8	60	30	1.902
R- V0442	VBCD 1/2"DE CC	G 1/2"	120	288	36	73	8	8	60	30	1.854
R-V0442/RP18	VBCD 1/2"DE CC RP 1:8	G 1/2"	120	288	36	73	8	8	60	30	1.854
R- V0443	VBCD 3/4"DE CC	G 3/4"	152	320	58	106	15	21	80	35	3.100
R-V0443/RP18	VBCD 3/4"DE CC RP 1:8	G 3/4"	152	320	58	106	15	21	80	35	3.100

 **On Request**

- Non-standard pressure setting
- Sealing cap (CODE/P) and arranged for sealing cap (CODE/PP)

OVER CENTER VALVES