

DOUBLE OVERCENTRE VALVES FIXING BY SCREW



VBCD DE A FLV

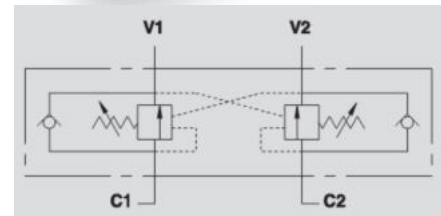
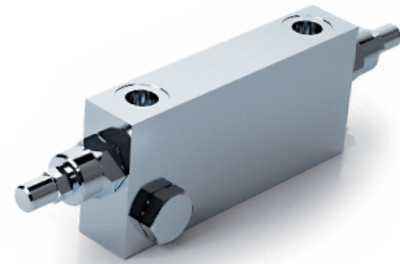
Flow Upto 60 LPM
Pressure 350 Bar



Description & Operation

These valves are used to control the actuator movements and block in both directions. In order to have the descent of a load under control and avoid the load's weight being carried away the valve will prevent any cavitation of the actuator. The special connection by mounting bolt, supplied with the valve, enables direct mounting of the valve onto the actuator. Valve setting must be at least 1.3 times more than the load pressure in order to enable the valve to close even when subjected to the maximum load pressure.

Connect V1 and V2 to the pressure flow, and flange C1 and C2 directly to the actuator using the provided bolt.



Hydraulic Symbol



Technical Data

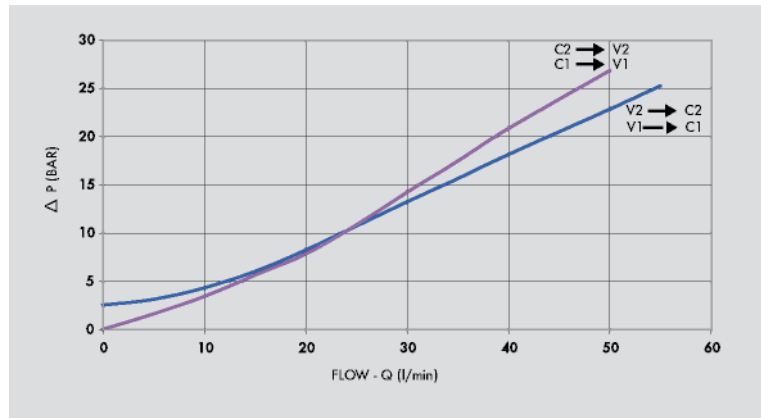
Maximum Flow	60 LPM
Maximum Operating Pressure	350 Bar
Body Material	Steel
Internal parts	Hardened and Ground steel
External Component treatment	Zn/Fe - standard (96h) / Zn/Ni (720h)
Oil Temperature	50 Deg. C
Fluids	Mineral based or synthetics with lubricating properties
Viscosity	30 cSt
Standard Sealing	NBR-Buna N
Filtration	20/18/15 ISO 4406 (Max. Filtration admitted)
Orientation / Mounting	Inline
Weight	See Ordering details
Standard Pressure Setting	320 Bar



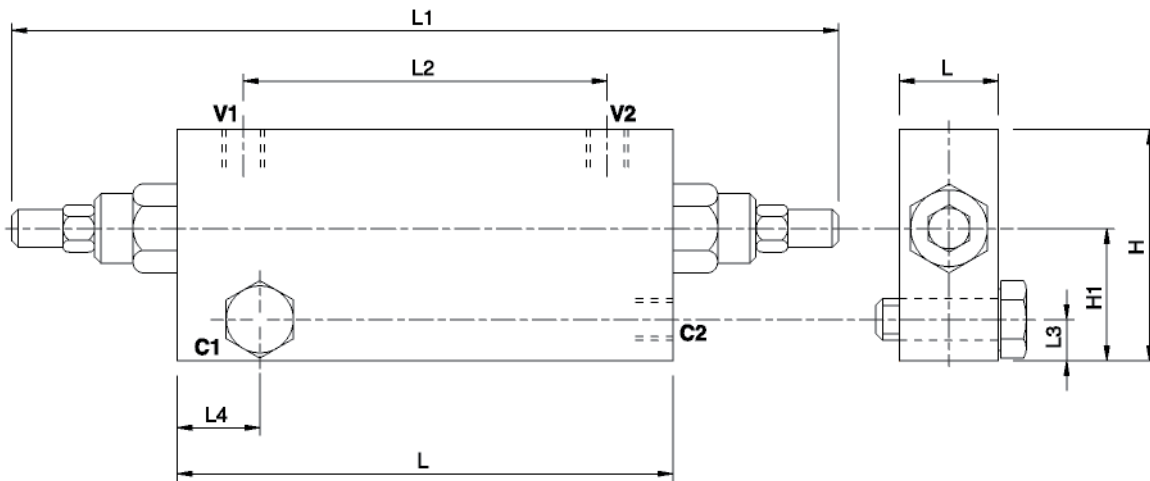
Specifications

Type	Pilot Ratio	Max.Flow	Max.Pressure
		LPM	Bar
VBCD 3/8"DE A FLV	1:4.5	40	350
VBCD 1/2"DE A FLV	1:4.5	60	350

Performance Curve



Dimensional Drawing



Ordering Details

Code	Type	V1-V2 C1-C2	L	L1	L2	L3	L4	H	H1	S	Weight
		GAS	mm	mm	mm	mm	mm	mm	mm	mm	Kg
R-V0422/FLV	VBCD 3/8"DE A FLV	G 3/8"	150	250	110	17	22	70	44	30	2.414
R-V0432/FLV	VBCD1/2"DE A FLV	G 1/2"	150	250	110	19	24	80	50	30	2.700

On Request

- Non-standard pressure setting
- Sealing cap (CODE/P) and arranged for sealing cap (CODE/PP)

OVER CENTER VALVES