

SINGLE OVERCENTRE VALVES FLANGEABLE

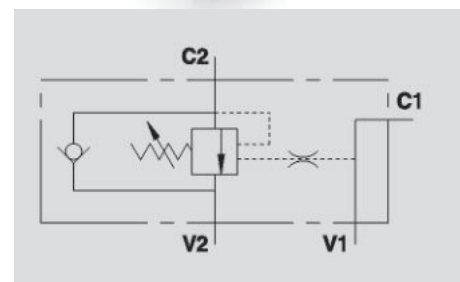


VBCD SE FL

Flow Upto 60 LPM
Pressure 350 Bar

Description & Operation

These valves are used to control the actuator's movements and block in one direction. In order to have the descent of a load under control and avoid the load's weight being carried away the valve will prevent any cavitation of the actuator. Flange port enable direct mounting of the valve onto the actuator. Valve setting must be at least 1.3 times more than the load pressure in order to enable the valve to close even when subjected to the maximum load pressure. In-line mounting. Connect V1 and V2 to the supply, C1 to the free flow side of the actuator and flange C2 to the actuator side you want the flow to be blocked. V1 and V2 ports are reversible.



Hydraulic Symbol

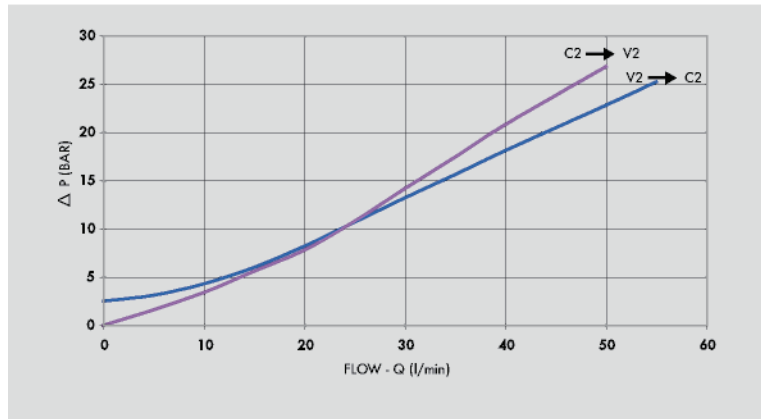
Technical Data

Maximum Flow	60 LPM
Maximum Pressure	350 Bar
Body Material	Steel
Internal parts	Hardened and Ground steel
External Component treatment	Zn/Fe - standard (96h) / Zn/Ni (720h)
Oil Temperature	50 Deg. C
Fluids	Mineral based or synthetics with lubricating properties
Viscosity	30 cSt
Standard Sealing	NBR-Buna N
Filtration	20/18/15 ISO 4406 (Max. Filtration admitted)
Orientation / Mounting	Inline
Weight	See Ordering details
Standard Pressure Setting	320 Bar

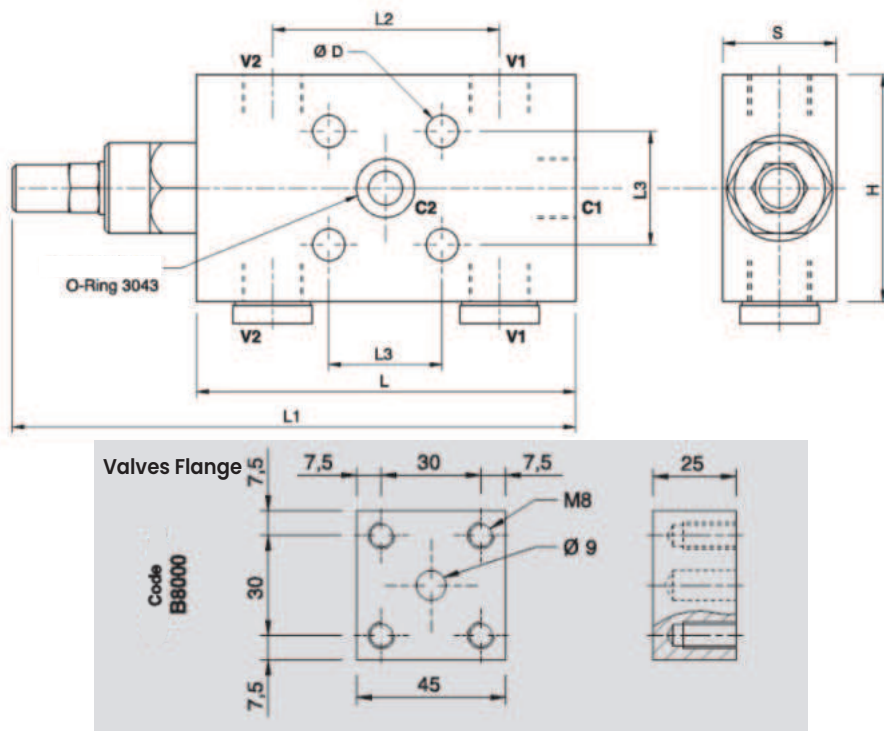
Specifications

Type	Pilot Ratio	Max.Flow	Max.Pressure
		LPM	Bar
VBCD 3/8" SE/FL	1:4.5	40	350
VBCD 3/8" SE/FL	1:4.5	40	350
VBCD 1/2" SE/FL	1:4.5	60	350

 **Performance Curve**



 **Dimensional Drawing**



 **Ordering Details**

Code	Type	V1-V2 C1-C2	C2	L	L1	L2	L3	H	S	D	Weight
		GAS	mm	mm	mm	mm	mm	mm	mm	mm	Kg
R-V0400	VBCD 3/8" SE FL	G 3/8"	Ø9	100	149	60	30	60	30	Ø8.5	1.248
R-V0401	VBCD 3/8" SE FCB4	G 3/8"	Ø9	90	139	/	28	55	30	Ø6.25	1.080
R-V0402	VBCD 1/2" SE FL	G 1/2"	Ø9	100	149	65	30	60	30	Ø8.5	1.212

 **On Request**

- Non-standard pressure setting
- Sealing cap (CODE/P) and arranged for sealing cap (CODE/PP)

OVER CENTER VALVES