

SINGLE OVERCENTRE VALVES

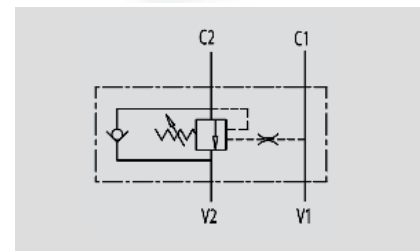


VBCD SE

Flow Upto 105 LPM
Pressure 350 Bar

Description & Operation

These valves are used to control the actuator's movements and block in one direction. In order to have the descent of a load under control and avoid the load's weight being carried away the valve will prevent any cavitation of the actuator. Valve setting must be at least 1.3 times more than the load pressure in order to enable the valve to close even when subjected to the maximum load pressure. Connect V1 and V2 to the pressure flow, C1 to the free flow the actuator's side you want the flow to be blocked. In-line mounting.



Hydraulic Symbol

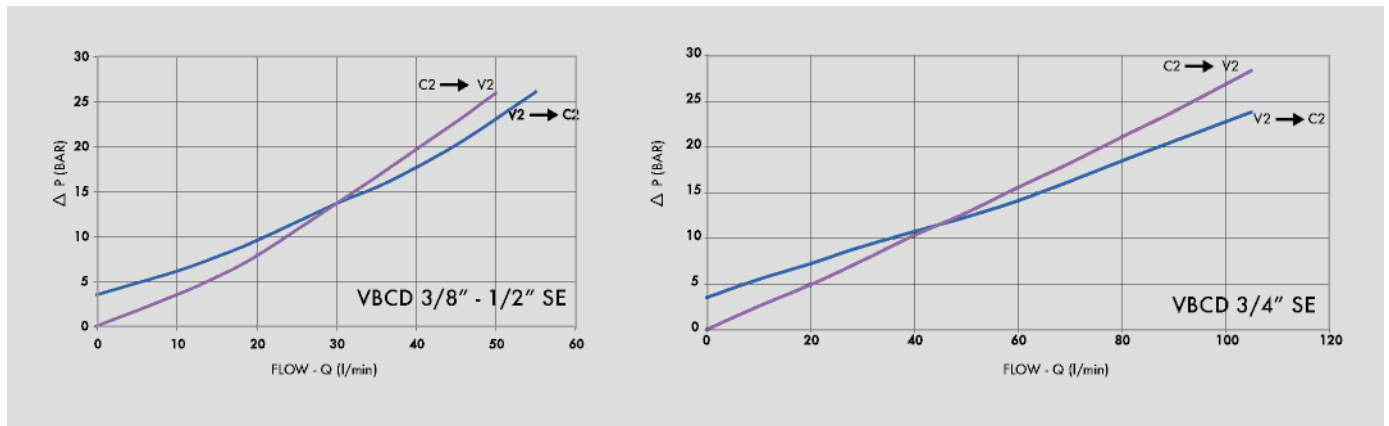
Technical Data

Maximum Flow	105 LPM
Maximum Pressure	350 Bar
Body Material	Steel
Internal parts	Hardened and Ground steel
External Component treatment	Zn/Fe - standard (96h) / Zn/Ni (720h)
Oil Temperature	50 Deg. C
Fluids	Mineral based or synthetics with lubricating properties
Viscosity	30 cSt
Standard Sealing	NBR-Buna N
Filtration	20/18/15 ISO 4406 (Max. Filtration admitted)
Orientation / Mounting	Inline
Weight	See Ordering details
Standard Pressure Setting	320 Bar

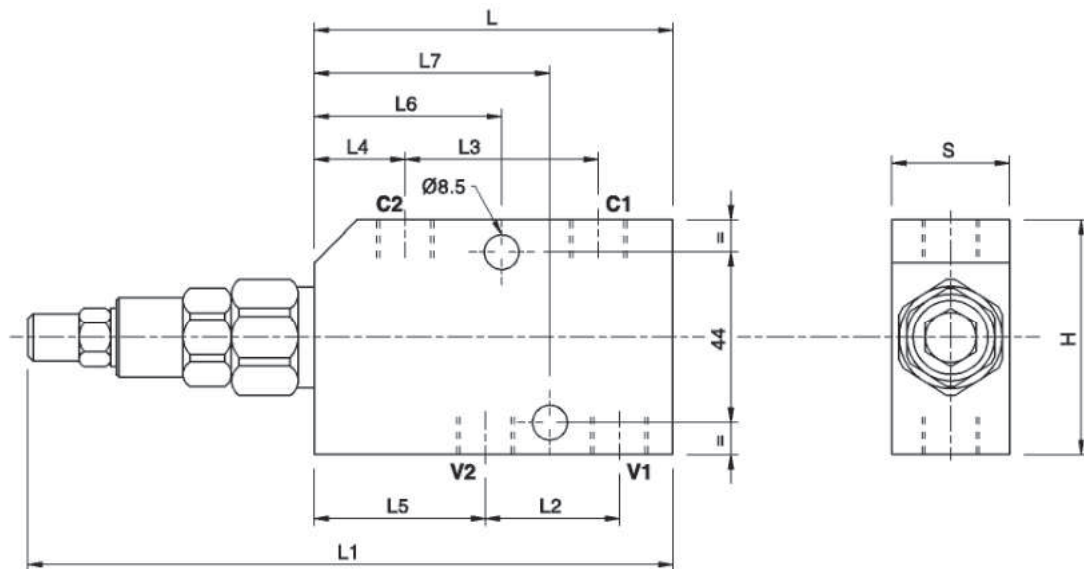
Specifications

Type	Pilot Ratio	Max.Flow	Max.Pressure
		LPM	Bar
VBCD 3/8" SE	1:3.1	35	350
VBCD 3/8" SE RP 1:8	1:8	35	350
VBCD 1/2" SE	1:3.1	50	350
VBCD 1/2" SE RP 1:8	1:8	50	350
VBCD 3/4" SE	1:5.5	105	350
VBCD 3/4" SE RP 1:8	1:8	105	350

Performance Curve



Dimensional Drawing



Ordering Details

Code	Type	V1-V2 C1-C2	L	L1	L2	L3	L4	L5	L6	L7	H	S	Weight
		GAS	mm	mm	mm	mm	mm	mm	mm	mm	mm	mm	Kg
R-V0390	VBCD 3/8" SE	G 3/8"	90	162	32	48	23	42	48	58	60	30	1.194
R-V0390/RP18	VBCD 3/8" SE RP 1:8	G 3/8"	90	162	32	48	23	42	48	58	60	30	1.194
R-V0410	VBCD 1/2" SE	G 1/2"	90	162	35	48	23	40.5	48	58	60	30	1.130
R-V0410/RP18	VBCD 1/2" SE RP 1:8	G 1/2"	90	162	35	48	23	40.5	48	58	60	30	1.130
R-V0411	VBCD 3/4" SE	G 3/4"	118	190	47	71	23	47	72.5	72.5	80	35	2.150
R-V0411/RP18	VBCD 3/4" SE RP 1:8	G 3/4"	118	190	47	71	23	47	72.5	72.5	80	35	2.150

On Request

- Non Standard Pressure setting
- Sealing cap (CODE/P) and arranged for sealing cap (CODE/PP)

OVER CENTER VALVES