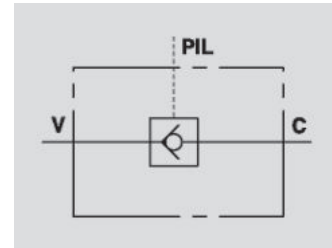


# 3 WAY SINGLE PILOT OPERATED CHECK VALVES , IN LINE



## VBPSL

**Flow Upto 120 LPM**  
**Pressure 350 Bar**



Hydraulic Symbol

### Description & Operation

These valves are used to block the cylinder in one direction. The flow is free in one direction and blocked in the reverse direction until pilot pressure is applied. They are designed for in-line mounting. Connect V to the pressure flow, C to the actuator's side you want the flow to be blocked in and PIL to the pilot line.

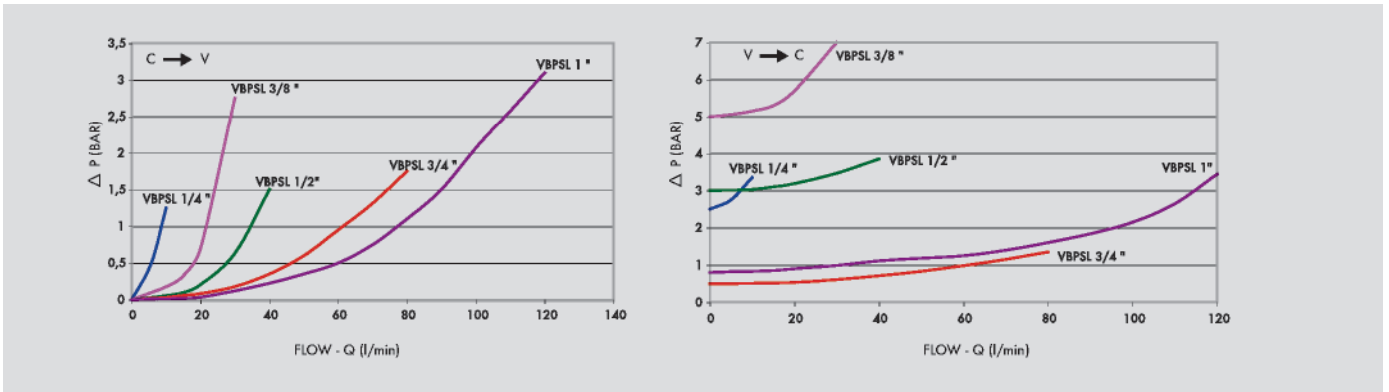
### Technical Data

Maximum Flow	120 LPM
Maximum Pressure	350 Bar
Body Material	Steel
Internal parts	Hardened and Ground steel
External Component treatment	Zn/Fe - standard (96h) / Zn/Ni (720h)
Oil Temperature	50 Deg. C
Fluids	Mineral based or synthetics with lubricating properties
Viscosity	30 cSt
Standard Sealing	NBR-Buna N
Filtration	20/18/15 ISO 4406 ( Max. Filtration admitted)
Orientation / Mounting	Inline
Weight	See Ordering details

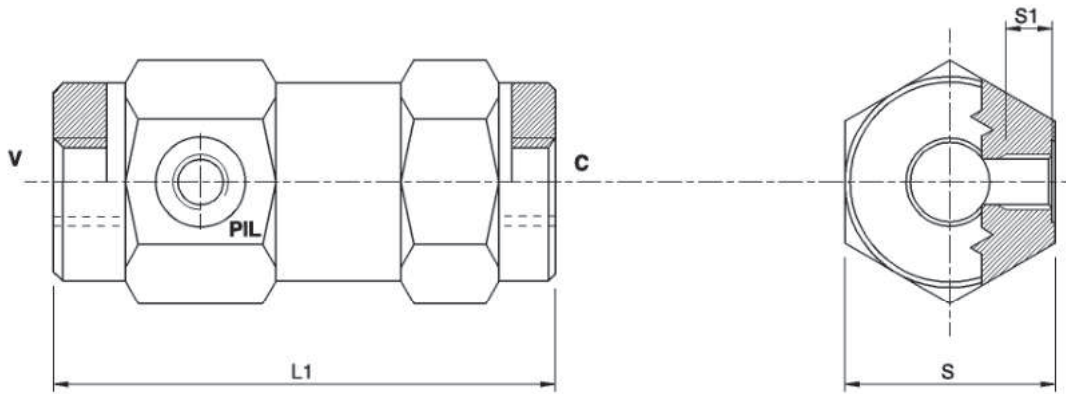
### Specifications

Type	Pilot Ratio	Max.Flow	Max.Pressure	Cr.Pressure
		LPM	Bar	Bar
VBPSL 1/4"	1:9.8	20	350	2.5
VBPSL 3/8"	1:6.5	30	300	5
VBPSL 1/2"	1:4.6	45	300	3
VBPSL 3/4"	1:4.4	80	250	0.5
VBPSL 1"	1:3.5	120	220	1

 **Performance Curve**



 **Dimensional Drawing**



 **Ordering Details**

Code	Type	V-C	PIL	L1	S	S1	Weight
		GAS	GAS	mm	mm	mm	mm
R-V0201	VBPSL 1/4"	G 1/4"	G 1/4"	103	36	11	0.690
R-V0202	VBPSL 3/8"	G 3/8"	G 1/4"	109	40	11.5	0.900
R-V0203	VBPSL 1/2"	G 1/2"	G 1/4"	120	42	11	1.040
R-V0204	VBPSL 3/4"	G 3/4"	G 1/4"	145	55	14	2.300
R-V0205	VBPSL 1"	G 1"	G 1/4"	165	55	14	2.350

 **On Request**

- 8 Bar spring

SINGLE PILOT CHECK VALVES