

# DOUBLE PILOT OPERATED CHECK VALVES TO WELD



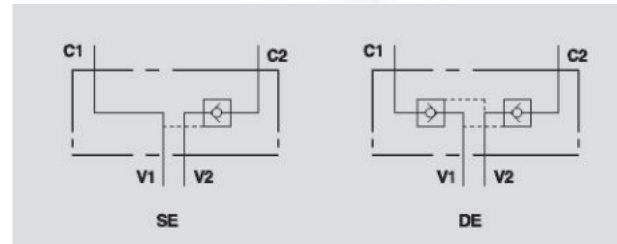
## VBAS

**Flow Upto 25 LPM**  
**Pressure 350 Bar**

### Description & Operation

Pilot check valves are used to block the cylinder in both directions. Flow is free in one direction and blocked in the reverse direction until pilot pressure is applied. The feature of this valve is the side positioned ports.

Connect V1 and V2 to the pressure flow and C1 and C2 to the actuator.



Hydraulic Symbol

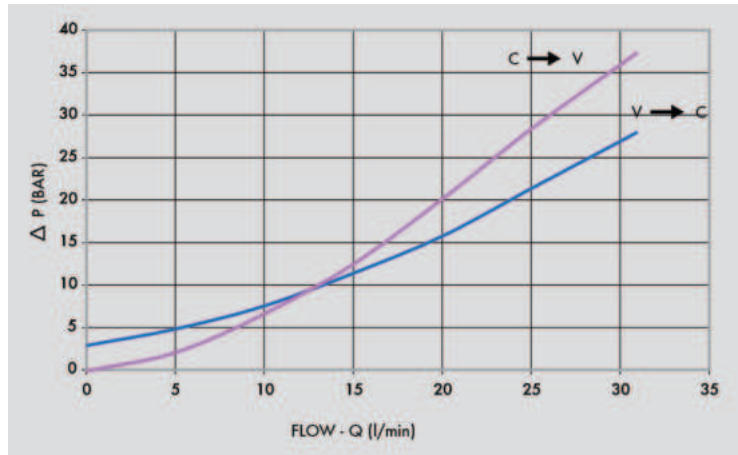
### Technical Data

Maximum Flow	25 LPM
Maximum Pressure	350 Bar
Body Material	Steel
Internal parts	Hardened and Ground steel
External Component treatment	Zn/Fe - standard (96h) / Zn/Ni (720h)
Oil Temperature	50 Deg. C
Fluids	Mineral based or synthetics with lubricating properties
Viscosity	30 cSt
Standard Sealing	NBR-Buna N
Filtration	20/18/15 ISO 4406 ( Max. Filtration admitted)
Orientation / Mounting	Inline
Weight	See Ordering details

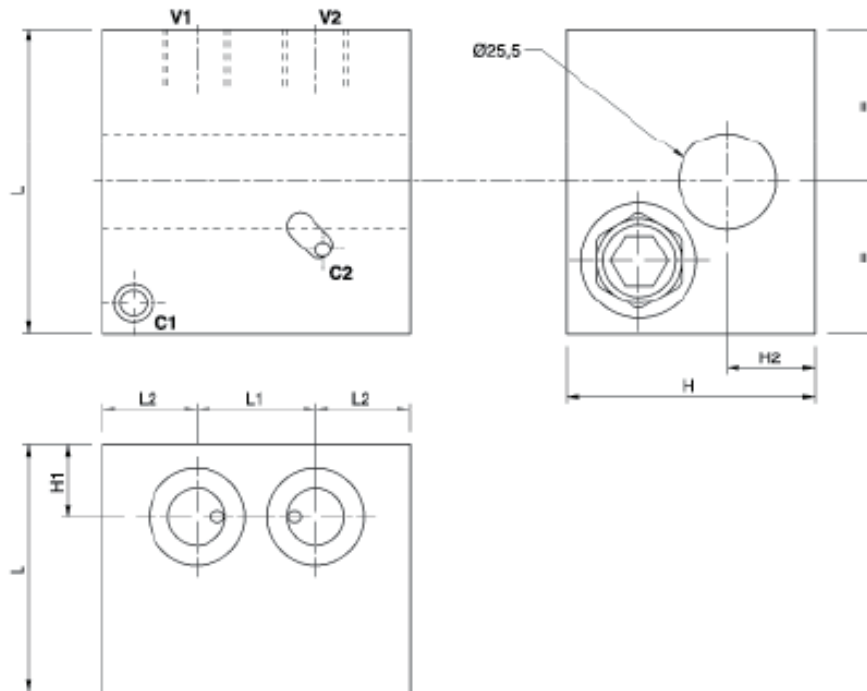
### Specifications

Type	Pilot Ratio	Max.Flow	Max.Pressure	Cr.Pressure
		LPM	Bar	Bar
VBAS 70	1:5.5	25	350	3
VBAS 80	1:5.5	25	350	3
VBAS 90	1:5.5	25	350	3

 **Performance Curve**



 **Dimensional Drawing**



 **Ordering Details**

Code	Type	V1-V2	L	L1	L2	L3	H	H1	H2	Weight
		GAS	mm	mm	mm	mm	mm	mm	mm	Kg
R-V1011	VBAS 70	G 3/8"	70	28	27	15	65	17	24	1.970
R-V1010	VBAS 80	G 3/8"	80	31	24.5	24.5	65	19	24	2.590
R-V1012	VBAS 90	G 3/8"	90	28	31	31	65	19	24	3.382