



VBPDE FL

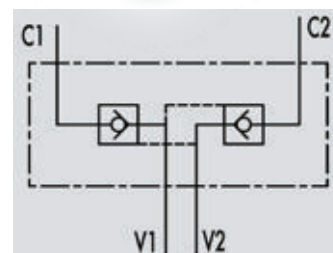
Flow Upto 55 LPM
Pressure 350 Bar



Description & Operation

Pilot check valves are used to block the cylinder in both directions. Flow is free in one direction and blocked in the reverse direction until pilot pressure is applied. Face mounting enables assembly directly onto the cylinder.

Connect V1 and V2 to the pressure flow and C1 and C2 to the actuator through the flange.



Hydraulic Symbol



Technical Data

Maximum Flow	55 LPM
Maximum Pressure	350 Bar
Body Material	Steel
Internal parts	Hardened and Ground steel
External Component treatment	Zn/Fe - standard (96h) / Zn/Ni (720h)
Oil Temperature	50 Deg. C
Fluids	Mineral based or synthetics with lubricating properties
Viscosity	30 cSt
Standard Sealing	NBR-Buna N
Filtration	20/18/15 ISO 4406 (Max. Filtration admitted)
Orientation / Mounting	Inline
Weight	See Ordering details



Specifications

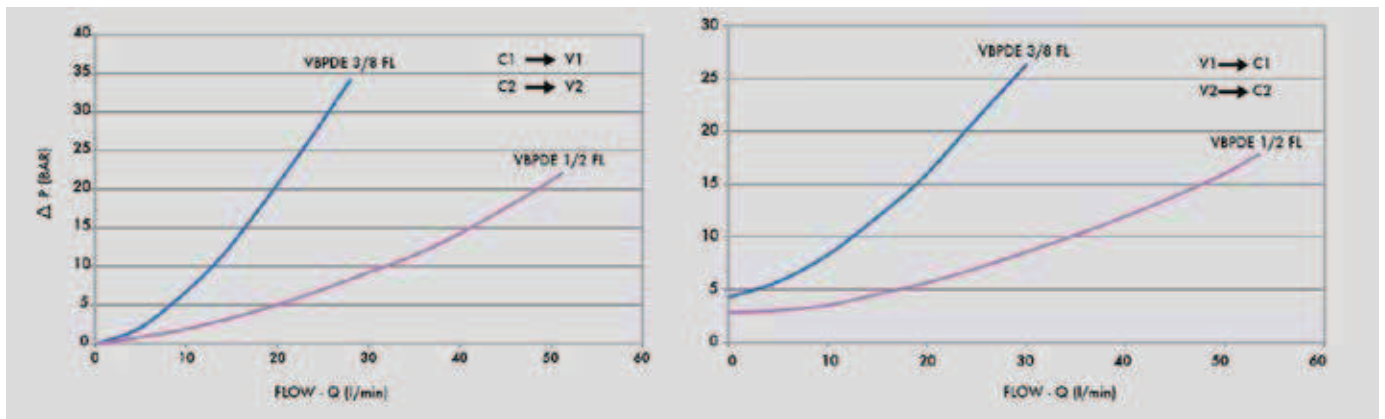
Type	Pilot Ratio	Max.Flow	Max.Pressure	Cr.Pressure
		LPM	Bar	Bar
VBPDE 3/8" FL	1:5.5	30	350	4.5
VBPDE 1/2" FL	1:4.5	55	350	5.5
VBPDE 3/8" FL - L3=62	1:5.5	30	350	4.5



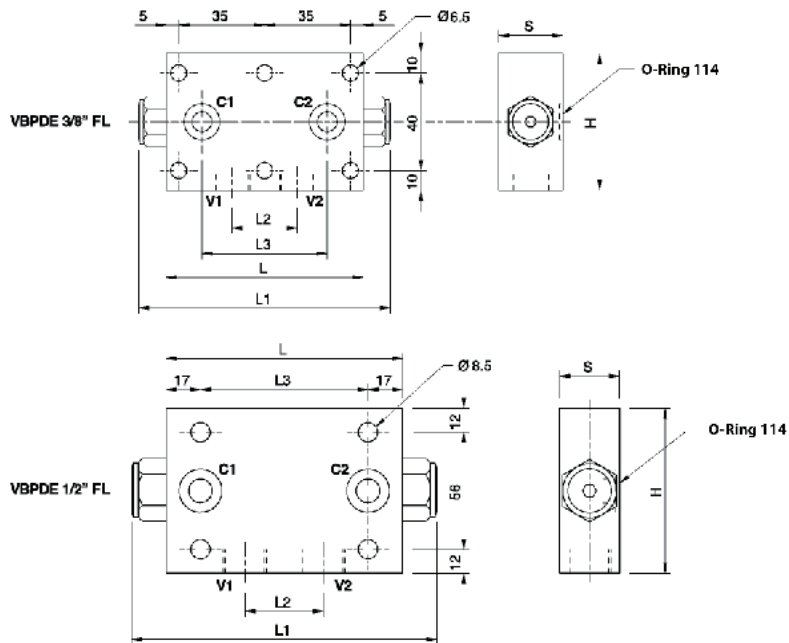
On Request

- Without seal on pilot piston
- 1 Bar spring
- 8 Bar spring

 Performance Curve



 Dimensional Drawing



 Ordering Details

Code	Type	VI-V2	CI-C2	L	L1	L2	L3	H	S	Weight
		GAS	mm	mm	mm	mm	mm	mm	mm	Kg
R-V0185	VBPE 3/8" FL	G 3/8"	Ø6.5	80	113	30	52	60	30	1.018
R-V0195	VBPE 1/2" FL	G 1/2"	Ø11	115	147	39	81	80	35	2.362
R-V0187	VBPE 3/8" FL - L3=62	G 3/8"	Ø6	90	117	32	62	60	35	1.342

 Valve Flange Drawing

