

# DOUBLE PILOT OPERATED CHECK VALVES – TYPE A



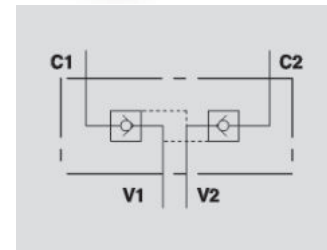
## VBPDE A

**Flow Upto 100 LPM**  
**Pressure 350 Bar**

### Description & Operation

Pilot check valves are used to block the cylinder in both directions. Flow is free in one direction and blocked in the reverse direction until pilot pressure is applied.

Connect V1 and V2 to the pressure flow and C1 and C2 to the actuator.



Hydraulic Symbol

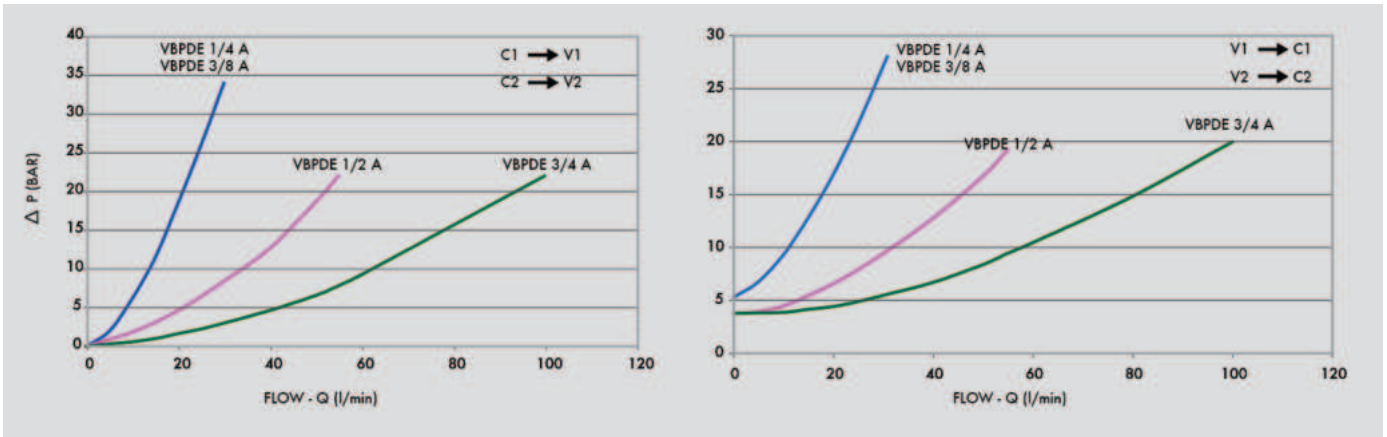
### Technical Data

Maximum Flow	100 LPM
Maximum Pressure	350 Bar
Body Material	Steel
Internal parts	Hardened and Ground steel
External Component treatment	Zn/Fe - standard (96h) / Zn/Ni (720h)
Oil Temperature	50 Deg. C
Fluids	Mineral based or synthetics with lubricating properties
Viscosity	30 cSt
Standard Sealing	NBR-Buna N
Filtration	20/18/15 ISO 4406 ( Max. Filtration admitted)
Orientation / Mounting	Inline
Weight	See Ordering details

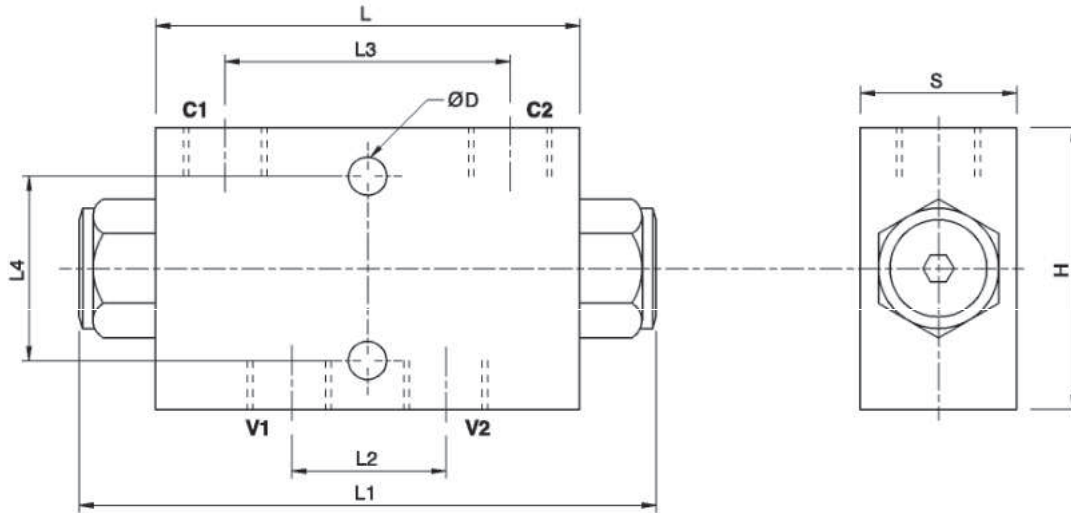
### Specifications

Type	Pilot Ratio	Max.Flow	Max.Pressure	Cr.Pressure
		LPM	Bar	Bar
VBPDE 1/4" A	1:5,5	20	350	4.5
VBPDE 3/8" A	1:5,5	30	350	4.5
VBPDE 1/2" A	1:4,5	55	350	5.5
VBPDE 3/4" A	1:3,7	100	350	3

 Performance Curve



 Dimensional Drawing



 Ordering Details

Code	Type	V1-V2 C1-C2	L	L1	L2	L3	L4	H	S	D	Weight
		GAS	mm	mm	mm	mm	mm	mm	mm	mm	Kg
R-V0178	VBPDE 1/4" A	G 1/4"	80	113	27	52	44	60	30	8,5	1.032
R-V0180	VBPDE 3/8" A	G 3/8"	80	113	30	52	44	60	30	8,5	0.994
R-V0190	VBPDE 1/2" A	G 1/2"	115	147	39	80	40	80	35	8,5	2.324
R-V0191	VBPDE 3/4" A	G 3/4"	158	198	50	105	58	80	50	10,5	4.800

 On Request

- Without seal on pilot piston
- 1 Bar spring
- 8 Bar spring