

# DOUBLE PILOT OPERATED CHECK VALVE WITH ADJUSTABLE BANJO UNION



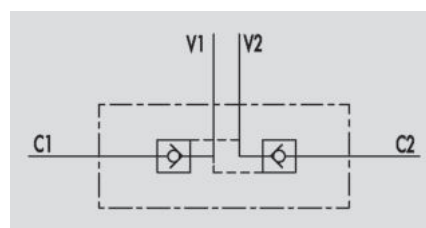
## VBPDE SC

**Flow Upto 30 LPM**  
**Pressure 350 Bar**

### Description & Operation

Pilot check valves are used to block the cylinder in both directions. Flow is free in one direction and blocked in the reverse direction until pilot pressure is applied. This valve is ideal for very short cylinders. The valve cartridge can also serve as banjo fitting, allowing a 90° rotation after loosening the nut.

Connect V1 and V2 to the pressure flow, connect C1 directly to the cylinder through the 3/8" screw and C2 to the cylinder through the banjo.



Hydraulic Symbol

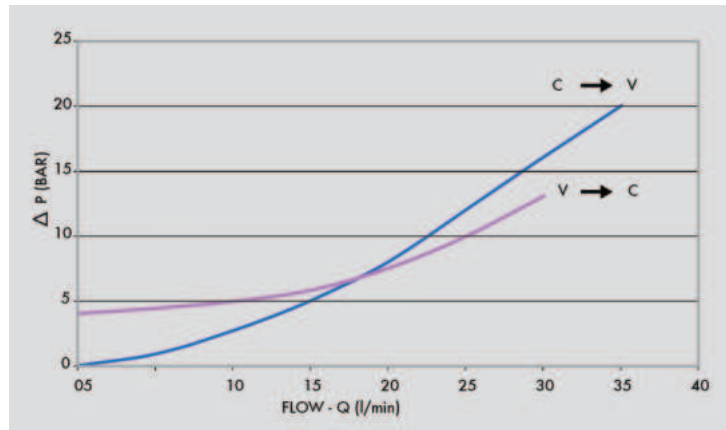
### Technical Data

Maximum Flow	30 LPM
Maximum Pressure	350 Bar
Body Material	Steel
Internal parts	Hardened and Ground steel
External Component treatment	Zn/Fe - standard (96h) / Zn/Ni (720h)
Oil Temperature	50 Deg. C
Fluids	Mineral based or synthetics with lubricating properties
Viscosity	30 cSt
Standard Sealing	NBR-Buna N
Filtration	20/18/15 ISO 4406 ( Max. Filtration admitted)
Orientation / Mounting	Inline
Weight	See Ordering details

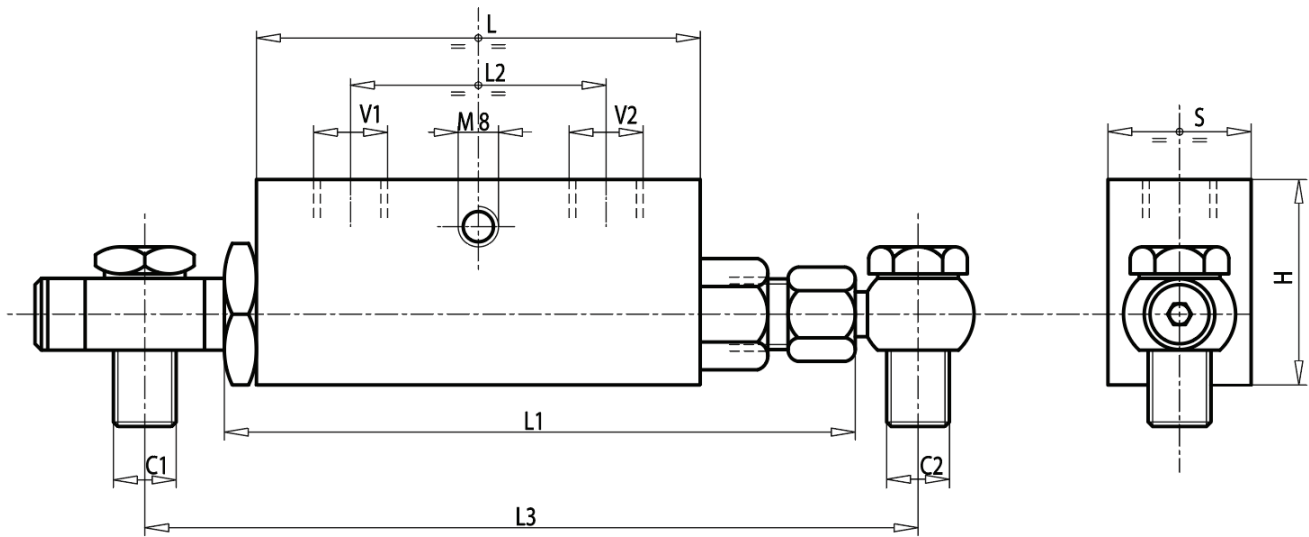
### Specifications

Type	Pilot Ratio	Max.Flow	Max.Pressure	Cr.Pressure
		LPM	Bar	Bar
VBPDE 3/8" L SC	1:5.5	30	350	4

**Performance Curve**



**Dimensional Drawing**



**Ordering Details**

Code	Type	V1-V2	C1-C2	L	L1	L2	L3	H	S	Weight
		GAS	mm	mm	mm	mm	mm	mm	mm	Kg
R-V0112	VBPDE 3/8" L SC	G 3/8"	12L	64	106	36	136	40	30	0.654

**On Request**

- 1/4" V1 and V2
- Without seal on pilot piston