

COMPACT DOUBLE PILOT OPERATED CHECK VALVE



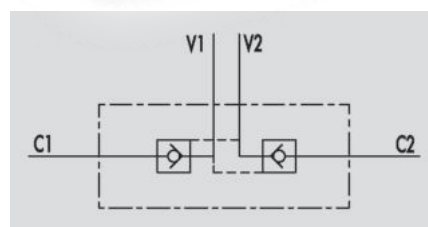
VBPDE CMP/FLV

Flow Upto 20 LPM
Pressure 300 Bar

Description & Operation

Pilot check valves are used to block the actuator in both directions. Flow is free in one direction and blocked in the reverse direction until pilot pressure is applied. This valve is ideal for very short distance centre cylinders and is fixed on them by a drilled screw supplied with the valve.

Connect V1 and V2 to the pressure flow and C1 and C2 to the actuator by the screw.



Hydraulic Symbol

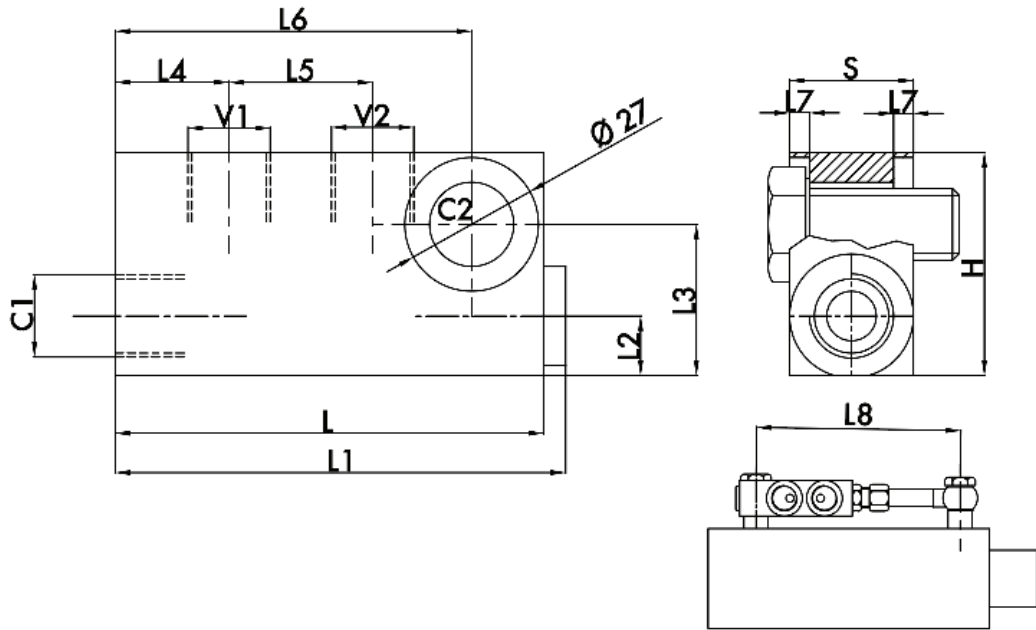
Technical Data

Maximum Flow	20 LPM
Maximum Pressure	300 Bar
Body Material	Steel
Internal parts	Hardened and Ground steel
External Component treatment	Zn/Fe - standard (96h) / Zn/Ni (720h)
Oil Temperature	50 Deg. C
Fluids	Mineral based or synthetics with lubricating properties
Viscosity	30 cSt
Standard Sealing	NBR-Buna N
Filtration	20/18/15 ISO 4406 (Max. Filtration admitted)
Orientation / Mounting	Inline
Weight	See Ordering details

Specifications

Type	Pilot Ratio	Max.Flow	Max.Pressure	Cr.Pressure
		LPM	Bar	Bar
VBPDE 3/8" L CMP/FLV	1:4.9	20	300	0.6
VBPDE 1/4" L CMP/FLV	1:4.9	20	300	0.6

 Dimensional Drawing



 Ordering Details

Code	Type	V1-V2 C1-C2	L	L1	L2	L3	L4	L5	L6	L7	L8	H	S	Weight
		GAS	mm	mm	mm	mm	mm	mm	mm	mm	mm	mm	mm	mm
R-V0117	VBPDE 1/4" L CMP/FLV*	G 1/4"	84	88.5	10	27	22	24	68.5	4	123	40	20	0.450
R-V0114	VBPDE 3/8" L CMP/FLV*	G 3/8"	86.5	91	12	30.5	23	29	72	4	127	45	25	0.654