



## SQ.D0.M22 Valve Series

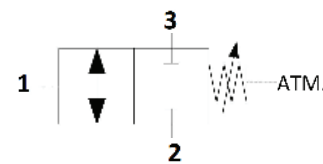
### METRIC Cartridge – 300 Bar

### Direct acting with external Pilot and Vent



#### Description & Operation

The SQ.D0.M22 is a screw in, cartridge style, direct acting, spool type hydraulic sequence valve with external pilot. Spring chamber is constantly air vented. The valve is design to open flow connection between two ports that were previously blocked. In the idle condition, the AQ.D0.M22 blocks flow between ports 2 and 3. Once pilot pressure at 1 attains the spring setting the spool shifts and allows flow between ports 2 and 3 in both directions.



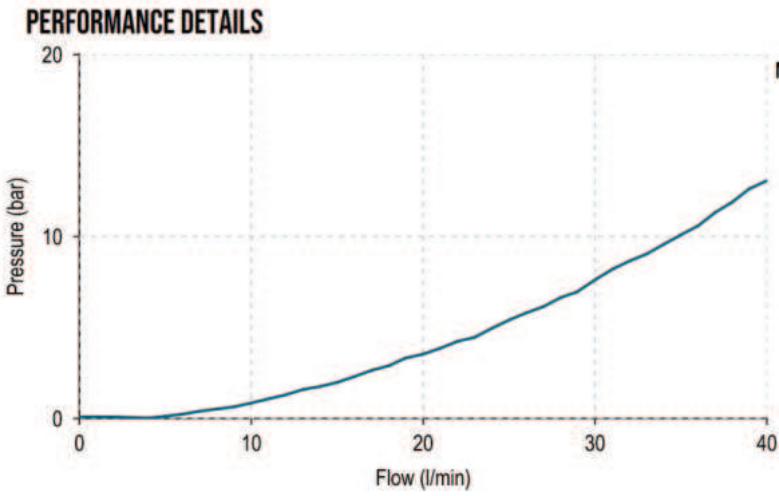
Hydraulic Symbol



#### Technical Data

Maximum operating pressure	300 Bar
Maximum flow	40 LPM
Maximum internal leakage	50 cm <sup>3</sup> / min @300 Bar
External component treatment	Zn/Fe – standard (96h) Zn/Ni (720h) upon customer request
O-ring Temperature Range	-30° C to 110° C (standard sealing NBR – BUNA-N)
Oil Temperature Range	-30° C to 110° C
Fluids	Mineral – based or synthetics with lubricating properties
Viscosities	7.4 to 420 cSt
Filtration	20/18/15 ISO 4406 (maximum filtration admitted)
Orientation	No restrictions
Installation torque	45-50 Nm Hex. 27
Tightening torque nut	13-17 Hex. 19
Oil testing condition	ISO VG 46 cSt
Seal kit code	SLKT.068
Weight	0.328 kg

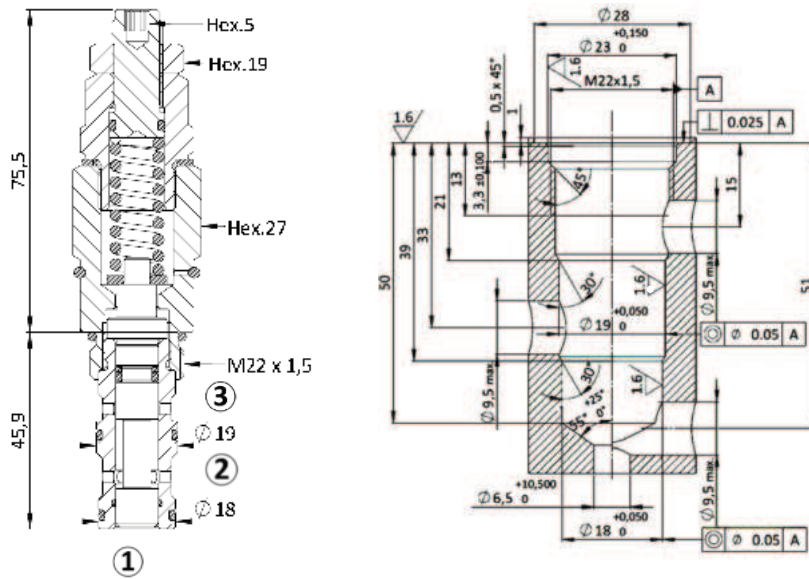
 **Performance Curve**



**NOTE:**  
The performance chart illustrates flow handling capacity 2 to 3 and 3 to 2 (idle position).  
p/Q curves recorded at TOil = 40°C and 46 cSt.

 **Dimensional Drawing**

**Cross Section and Cavity Details**



 **Ordering Code**

**S** **Q** **•** **D** **0** **•** **M** **2** **2** **•** **0** **\*** **•** **\*** **\*** **\***

valve basic code

**Cavity**  
M22 = METRIC M22 x 1.5 with  $\varnothing 19$  and  $\varnothing 18$  nose sizes

**Marking**  
0 = standard factory marking. customized marking can be done upon request

**Pressure setting in (Bar)**  
Standard setting are multiple of 5 bars.

Spring range	
Model Code	Pressure setting range (Bar)
Y	15-60

**SEQUENCE VALVES**