

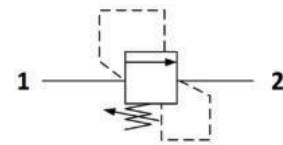
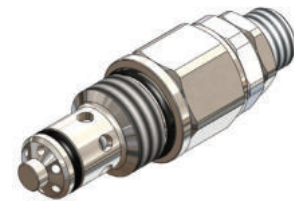


## DB.C0.S10 Valve Series

**SAE10 Cartridge – 350 Bar**  
**Direct acting – Poppet type**

### Description & Operation

A screw-in, cartridge style, direct acting, poppet type, normally closed hydraulic relief valve. It's typically used to protect hydraulic components from pressure transients. When the pressure at the Inlet (1) reaches the valve setting, the valve starts to open to tank (2) throttling flow to minimize the pressure rise. The innovative geometry of the deflector provides in fact a very low rise rate, and the poppet design guarantees great stability. The cartridge offers quick response to load changes in hydraulic circuits requiring low internal leakage as well as limited hysteresis. NOTE: the DBCO in the standard configuration can be used in crossover relief application



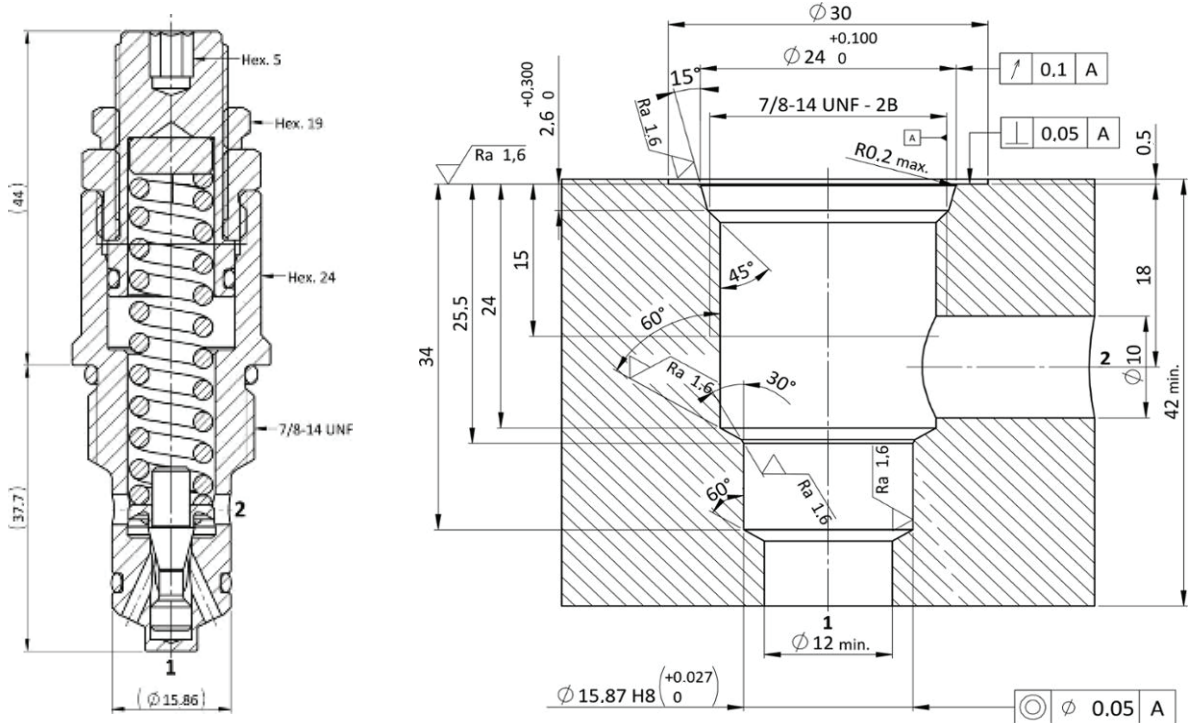
Hydraulic Symbol

### Technical Data

Maximum operating pressure	350 Bar
Maximum flow	50 LPM
Setting Pressure	See table below
Maximum internal leakage	0.25 cm <sup>3</sup> /min to 80% of nominal set point
External component treatment	Zn/Fe - standard (96h) Zn/Ni (720h)
O-ring Temperature	-30° C to 110° C (standard sealing NBR - BUNA-N)
Oil Temperature Range	-30° C to 110° C
Pressure settings established	@5 l/min
Reseat pressure	nominal 90% of cracking pressure
Fluids	Mineral - based or synthetics with lubricating properties
Viscosities	7.4 to 420 cSt
Filtration	20/18/15 ISO 4406 (maximum filtration admitted)
Orientation	No restrictions
Installation torque	55-65 Nm (Hex. 24)
Tightening torque nut	25-30 Nm (Hex. 19)
Oil testing condition	ISO VG 46 cSt
Seal kit code	SLKT.001
Plastic tamper proof cap	CTP.001
Weight	0.170 kg

 **Performance Curve**

**Cross Section and Cavity Details**



 **Ordering Code**

**D B • C 0 • S 1 0 • 0 \* • \* \* \***

valve basic code

**Cavity**  
S10 = 7/8- 14 UNF with  
15.86 nose sizes

**Marking**  
0 = standard factory  
marking. customized  
marking can be done  
upon request

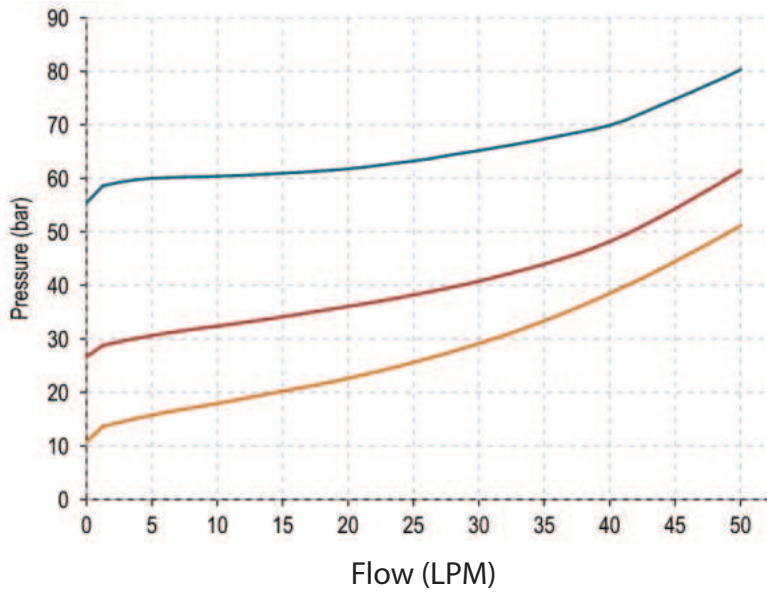
**pressure setting in (bar)**  
Note=No specific setting  
required

**Spring range**

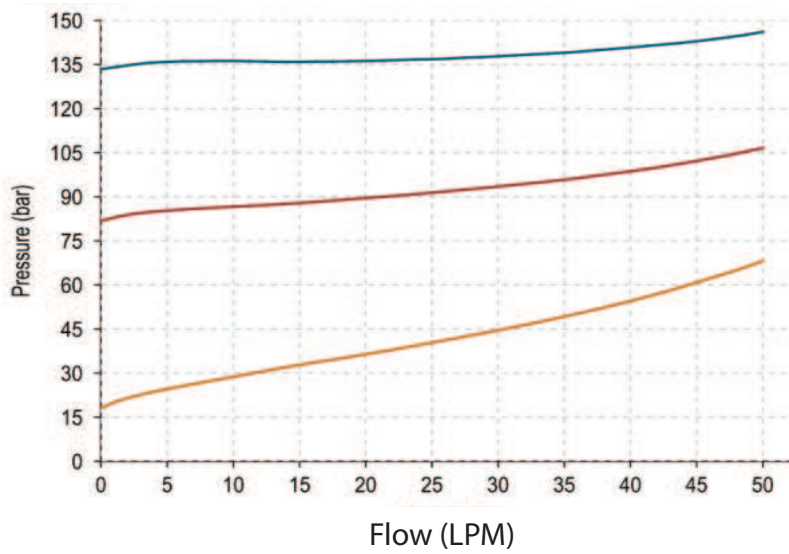
Spring model Code	Pressure setting range (Bar)	Pressure Increment per Turn (Bar)
Y	15-60	8
N	25-135	20
B	50-220	34
G	12-350	59

 Spring Graph

- Spring = Y

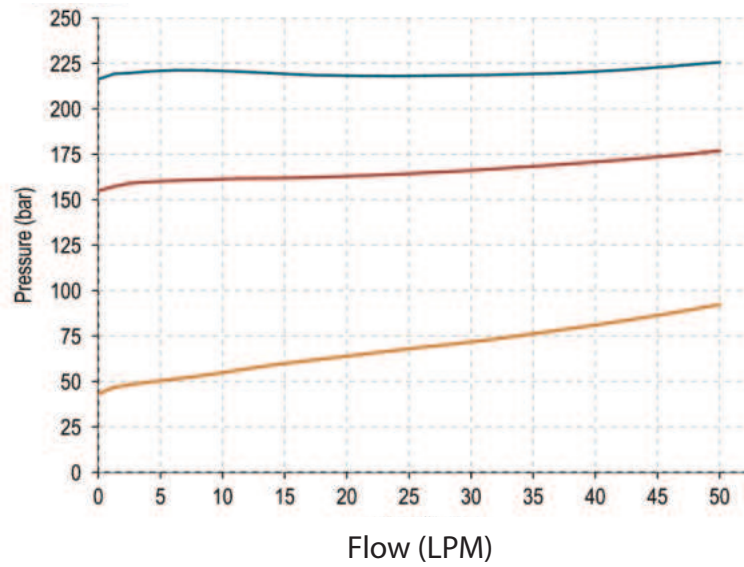


- Spring = N



 Spring Graph

● Spring = B



● Spring = G

