



Pilot Check Valves

SP.C5.S10 Valve Series

Hybrid SAE10 Cartridge – 350 Bar

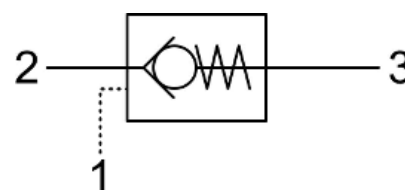
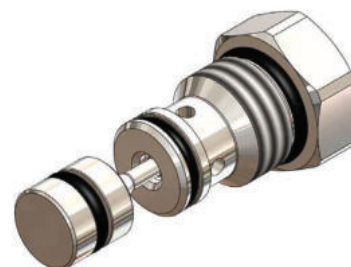
Direct acting check valve

Pilot piston to open



Description & Operation

Normally closed, dual pilot check valve. Cartridge is closed until sufficient pressure is applied on port 1 to reach the bias spring setting, lift the poppet and allow free flow to 2. The valve is normally closed from 2 to 1. When sufficient pressure is applied on port 3, the pilot piston lifts the poppet from its seat and allows flow from 2 to 1. Very limited leakage in the check condition.



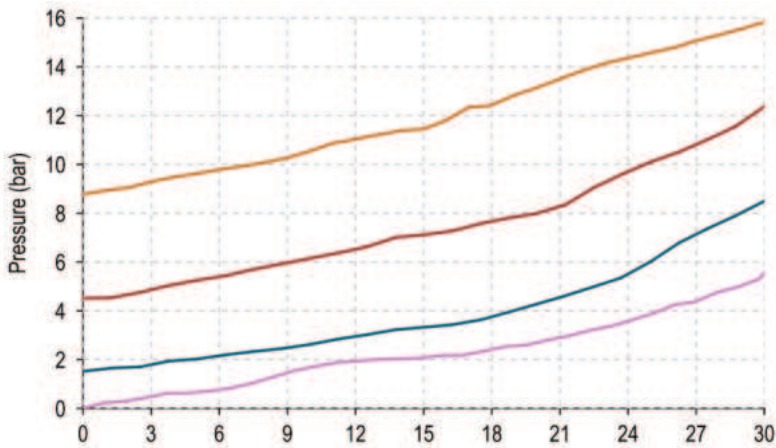
Hydraulic Symbol



Technical Data

Maximum operating pressure	350 Bar
Maximum flow	30 LPM
Maximum internal leakage	0.10 cm ³ / min @ 10 Bar 0.10 cm ³ / min @ 350 Bar
Pilot Ratio	7:1
External component treatment	Zn/Fe – standard (96h) Zn/Ni (720h)
O-ring Temperature Range	-30° C to 110° C (standard sealing NBR – BUNA-N)
Oil Temperature Range	-30° C to 110° C
Fluids	Mineral – based or synthetics with lubricating properties
Viscosities	7.4 to 420 cSt
Filtration	20/18/15 ISO 4406 (maximum filtration admitted)
Orientation	No restrictions
Installation torque	80–85 Nm
Oil testing condition	ISO VG 46 cSt
Seal kit code	SLKT.037
Weight	0.102 kg

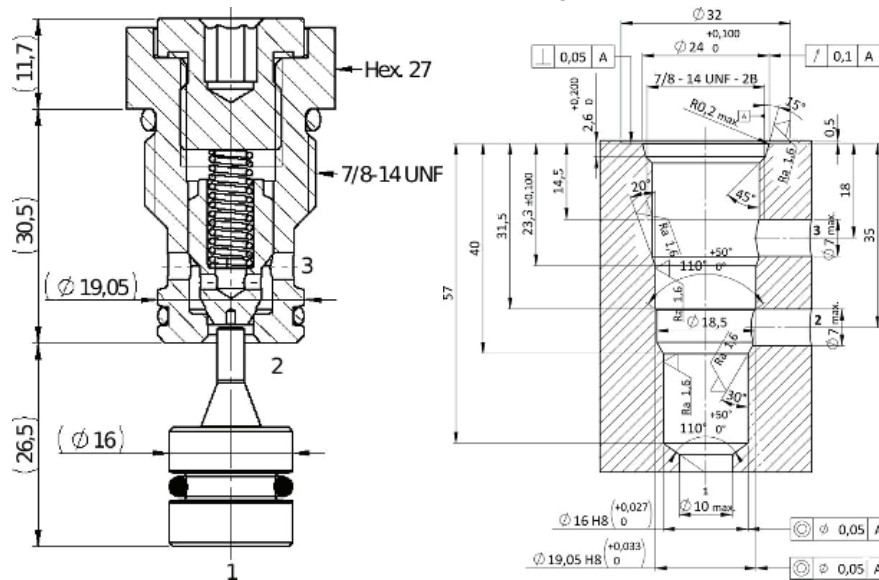
Performance Curve



Note:
The performance chart illustrates flow handling capacity for standard bias springs. p/Q curves are recorded at TOil = 40°C and 46 cSt

Dimensional Drawing

Cross Section and Cavity Details



Ordering Code

S P • C 5 • S 1 0 • 0 * • 0 0 0

valve basic code

Options
4=Without O-Ring on the pilot piston

Cavity
S10 = 7/8 - 14 UNF with \varnothing 19.5 nose size

Marking
0 =standard factory marking. customized marking can be done upon request

000= standard configuration

Bias spring

Spring model Code	Cracking Pressure (Bar)
N	1.5
B	4.5

PILOT CHECK VALVES