



# Pilot Check Valves

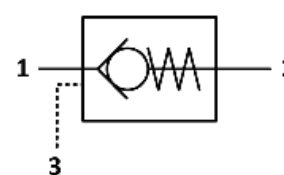
## SP.C0.S10 Valve Series

### Hybrid SAE10 Cartridge - 420 Bar

### Direct acting check valve - Pilot piston to open

#### Description & Operation

Normally closed, dual pilot check valve. Cartridge is closed until sufficient pressure is applied on port 1 to reach the bias spring setting, lift the poppet and allow free flow to 2. The valve is normally closed from 2 to 1. When sufficient pressure is applied on port 3, the pilot piston lifts the poppet from its seat and allows flow from 2 to 1. Very limited leakage in the check condition



Hydraulic Symbol

#### Technical Data

Maximum operating pressure	420 Bar
Maximum flow	80 LPM
Maximum internal leakage	0.10 cm <sup>3</sup> / min @ 10 Bar 0.10 cm <sup>3</sup> / min @ 420 Bar
Pilot Ratio	3.9:1
External component treatment	Zn/Fe - standard (96h) Zn/Ni (720h)
O-ring Temperature Range	-30° C to 110° C (standard sealing NBR - BUNA-N)
Oil Temperature Range	-30° C to 110° C
Fluids	Mineral - based or synthetics with lubricating properties
Viscosities	7.4 to 420 cSt
Filtration	20/18/15 ISO 4406 (maximum filtration admitted)
Orientation	No restrictions
Installation torque	55-65 Nm
Oil testing condition	ISO VG 46 cSt
Seal kit code	SLKT.080
Weight	0.100 kg

