



S.B0.G38 Valve Series

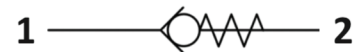
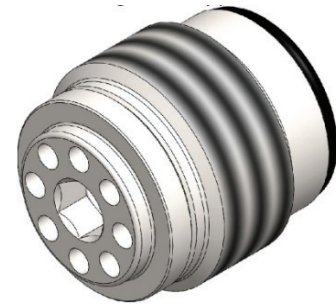
METRIC Cartridge - 350 Bar

Direct acting - Poppet type



Description & Operation

A screw-in, direct acting, ball type in-line check valve. Main use is as a blocking or load-holding device. The S.B0.G38 allows flow passage from port 1 to 2: the cartridge has a fully guided check which is spring-biased closed until sufficient pressure is applied at port 1 to open to 2. The flow is blocked in the opposite direction (2 to 1).



Hydraulic Symbol



Technical Data

Maximum operating pressure	350 Bar
Maximum flow	20 LPM
Maximum internal leakage	0.1 cm ³ / min @ 10 Bar 0.1 cm ³ / min @ 350 Bar
External component treatment	Zn/Fe - standard (96h) Zn/Ni (720h)
O-ring Temperature Range	-30° C to 110° C (standard sealing NBR - BUNA-N)
Oil Temperature Range	-30° C to 110° C
Fluids	Mineral - based or synthetics with lubricating properties
Viscosities	7.4 to 420 cSt
Filtration	20/18/15 ISO 4406 (maximum filtration admitted)
Orientation	No restrictions
Installation Tool	IK.007
Installation torque	4 Nm Hex 2.5
Oil testing condition	ISO VG 46 cSt
Seal kit code	SK.016
Weight	0.013 kg

