



## IS.0.M20 Valve Series

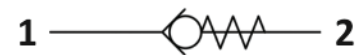
**METRIC Insert - 420 Bar**

**Direct acting - Poppet type**



### Description & Operation

A screw-in, direct acting, poppet type check valve. Main use is as a blocking or load-holding device. The IS.0.M20 allows flow passage from port 1 to 2: the cartridge has a fully guided check which is spring-biased closed until sufficient pressure is applied at port 1 to open to 2. The flow is blocked in the opposite direction (2 to 1). Insert type valve: the poppet seals directly against the cavity



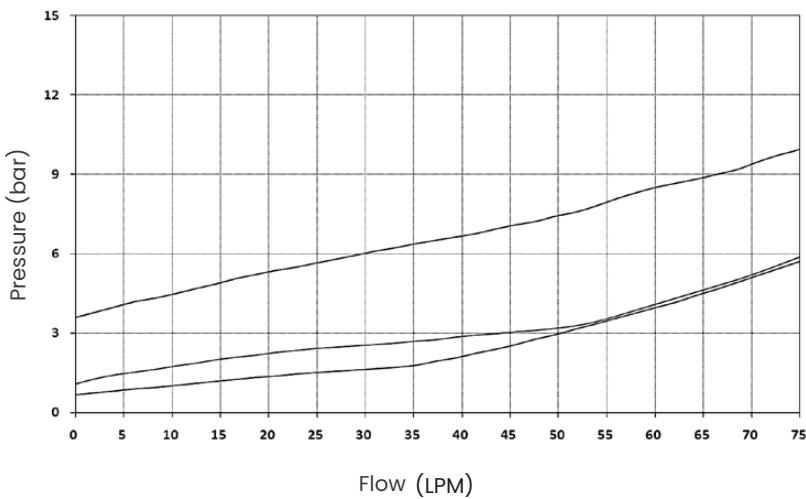
Hydraulic Symbol



### Technical Data

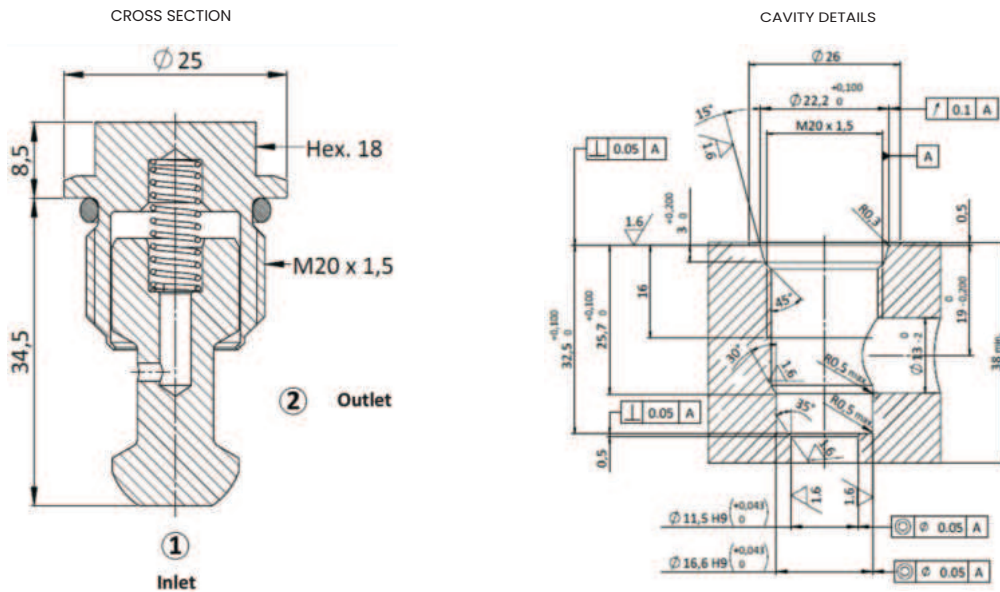
Maximum operating pressure	420 Bar
Maximum flow	75 LPM
Maximum internal leakage	0.10 cm <sup>3</sup> / min @ 10 Bar 0.10 cm <sup>3</sup> / min @ 420 Bar
External component treatment	Zn/Fe - standard (96h) Zn/Ni (720h) (Upon Request)
O-ring Temperature Range	-30° C to 110° C (standard sealing NBR - BUNA-N)
Oil Temperature Range	-30° C to 110° C
Fluids	Mineral - based or synthetics with lubricating properties
Viscosities	7.4 to 420 cSt
Filtration	20/18/15 ISO 4406 (maximum filtration admitted)
Orientation	No restrictions
Installation torque	45 - 50 Nm Hex 18
Oil testing condition	ISO VG 46 cSt
Seal kit code	SLKT
Coining Kit	CK.003
Weight	0.062 kg

**Performance Curve**



**Note:**  
The performance chart illustrates flow handling capacity for standard bias springs. p/Q curves are recorded at TOil = 40°C and 46 cSt

**Dimensional Drawing**



**Ordering Code**

**I C V 0 • M 2 0 • 0 \* • 0 0 0**

Valve Basic Code

000= standard configuration

**Cavity**  
M20 = METRIC M20 x 1.5

**Marking**  
0 =standard factory marking. customized marking can be done upon request

**Bias Spring Options**

Spring Model Code	Cracking Pressure (Bar)
Y	0.25
N	0.5
B	1.0
G	3.6
P	5.7