

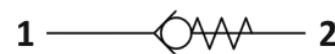


## S.H0.S10

**SAE10 Cartridge - 420 bar**  
**Direct acting - Ball type**

### Description & Operation

A screw-in, cartridge style, direct acting ball type check valve. Main use is as a blocking or load-holding device. The S.H0.S10 allows flow passage from port 1 to 2: the cartridge has a fully guided check which is spring-biased closed until sufficient pressure is applied at port 1 to open to 2. The flow is blocked in the opposite direction (2 to 1).

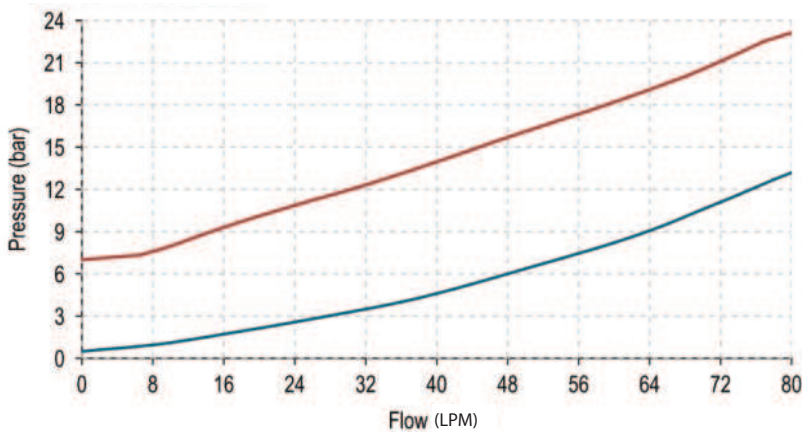


Hydraulic Symbol

### Technical Data

Maximum operating pressure	420 Bar
Maximum flow	80 LPM
Cracking pressure	See table below
Maximum Internal Leakage	0.10 cm <sup>3</sup> / min @ 10 Bar 0.10 cm <sup>3</sup> / min @ 420 Bar
External component treatment	Zn/Fe - standard (96h) Zn/Ni (720h)
O-ring Temperature Range	-30° C to 110° C (standard sealing NBR - BUNA-N)
Oil Temperature Rang	-30° C to 110° C
Fluids	Mineral - based or synthetics with lubricating properties
Viscosities	7.4 to 420 cSt
Filtration	20/18/15 ISO 4406 (maximum filtration admitted)
Orientation	No restrictions
Installation torque	55-65 Nm
Oil testing condition	ISO VG 46 cSt
Seal kit code	SLKT.032
Weight	0.083 kg

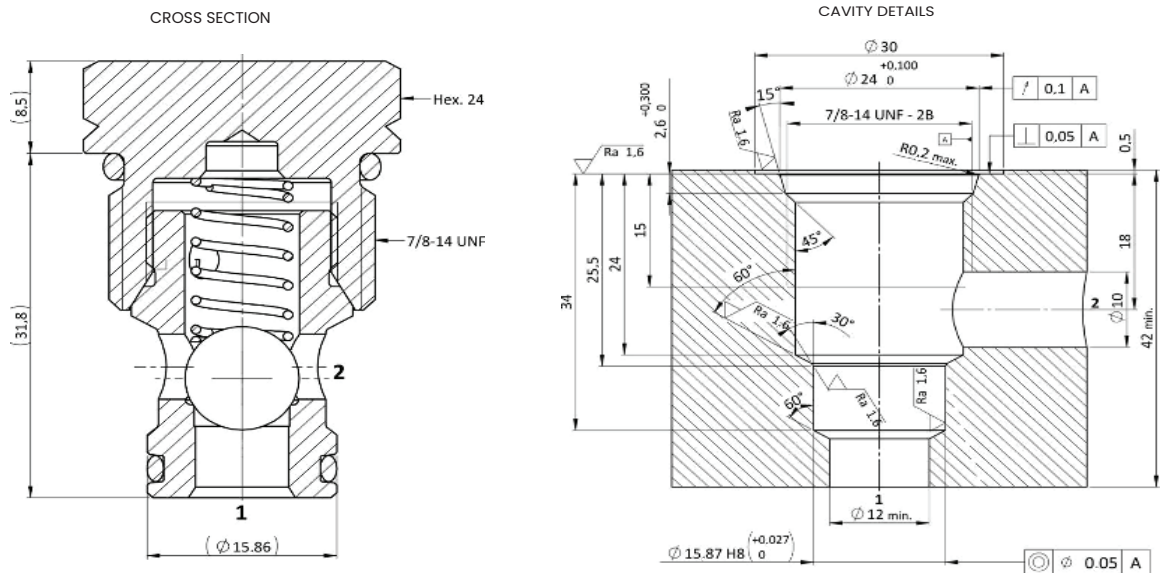
**Performance Curve**



**Note:**

The performance chart illustrates flow handling capacity for each spring bias option. p/Q curves are recorded at T Oil = 40°C and 46 cSt

**Dimensional Drawing**



**Ordering Code**

S • H 0 • S 1 0 • 0 \* • 0 0 0

Valve basic code      Cavity S08 = 7/8 - 14 UNF with  $\varnothing$  15.86 nose size      000 = Standard Configuration

**Marking**  
0 = Standard factory marking. Customized marking can be done upon request.

**Bias Spring Options**

Spring model Code	Cracking Pressure (Bar)
Y	<0.5
G	7.5

CHECK VALVES