



## S.Z0.S10

### Hybrid SAE Cartridge - 420 Bar

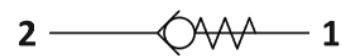
### Direct acting - Poppet type



#### Description & Operation

A screw-in, cartridge style, direct acting, poppet type check valve. Main use is as a blocking or load-holding device. The

S.Z0.S10 allows flow passage from port 2 to 1: the cartridge has a fully guided check which is spring-biased closed until sufficient pressure is applied at port 2 to open to 1. The flow is blocked in the opposite direction (1 to 2).



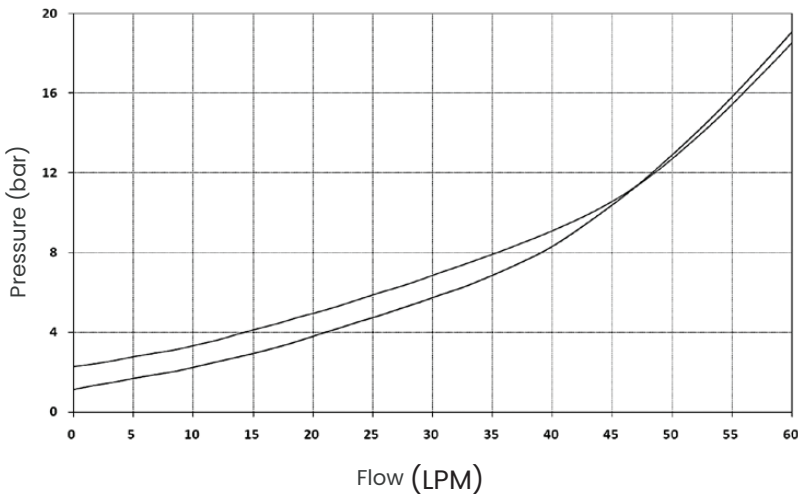
Hydraulic Symbol



#### Technical Data

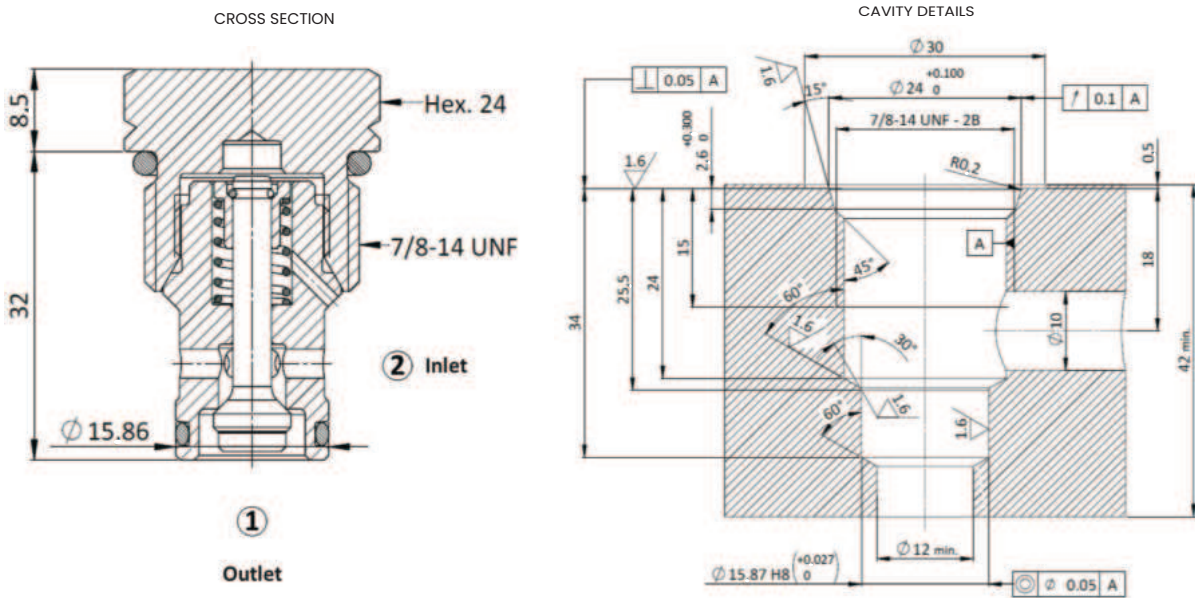
Maximum operating pressure	420 Bar
Maximum flow	60 LMP
Maximum Internal Leakage	0,10 cm <sup>3</sup> / min @ 10 Bar 0,10 cm <sup>3</sup> / min @ 420 Bar
External component treatment	Zn/Fe - standard (96h) Zn/Ni (720h)
O-ring Temperature Range	-30° C to 110° C (standard sealing NBR - BUNA-N)
Oil Temperature Range	-30° C to 110° C
Fluids	Mineral - based or synthetics with lubricating properties
Viscosities	7.4 to 420 cSt
Filtration	20/18/15 ISO 4406 (maximum filtration admitted)
Orientation	No restrictions
Installation torque	55-65 Nm
Oil testing condition	ISO VG 46 cSt
Seal kit code	SLKT.032
Weight	0,090 kg

**Performance Curve**



**Note:**  
The performance chart illustrates flow handling capacity for each spring bias option. p/Q curves are recorded at ToI = 40°C and 46 cSt

**Dimensional Drawing**



**Ordering Code**

**S** • **Z** **0** • **S** **1** **0** • **0** \* • **0** **0** **0**

Valve Basic Code      Cavity S10 = 7/8 - 14 UNF with  $\phi$ 15.86 nose size      Marking 0 = standard factory marking, customized marking can be done upon request      000 = standard configuration

**Bias Spring Option**

Spring Model Code	Cracking Pressure (Bar)
L	0.5
Y	1.0
N	2.0