



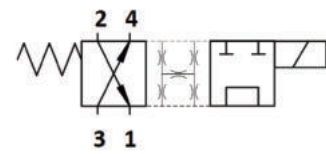
WE.A0.S08-E Valve Serie

SAE Cartridge - 250 Bar

Directional Valve - 4/2 Spool Type

Description & Operation

A solenoid-operated, 4-way, 2-position, spool-type, direct-acting, screw-in hydraulic cartridge valve. In the de-energized mode the SVA0.S08 flow paths are 2 to 1 and 3 to 4. In the energized mode the WEA0. S08 allows flow between 3 to 1, while blocking flow between 2 and 4. All ports are connected at crossover. The rigid design using a 1-piece body contributes to minimize the effect of eccentricities in cavity and provides great reliability. Low pressure drop thanks to optimized paths



Hydraulic Symbol

Technical Data

Maximum operating pressure	250 Bar
Maximum flow	12 LPM
Maximum internal leakage	150 cm ³ / min @ 250 Bar
External component treatment	Zn/Fe - standard (96h) Zn/Ni (720h)
O-ring Temperature Range	-30° C to 110° C (standard sealing NBR - BUNA-N)
Oil Temperature Range	-30° C to 110° C
Fluids	Mineral - based or synthetics with lubricating properties
Viscosities	7.4 to 420 cSt
Minimum pull-in voltage	85% of nominal
Filtration	20/18/15 ISO 4406 (maximum filtration admitted)
Orientation	No restrictions
Installation torque	25 - 30 Nm (Hex. 24)
Oil testing condition	ISO VG 46 cSt
Seal kit code	SLKT.065 & SLKT.027 (coil)
Coil	22W
Weight	0.160 kg

