



WE.A0.S08-D Valve Serie

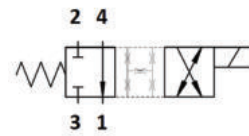
SAE Cartridge - 250 Bar

Directional Valve - 4/2 Spool Type



Description & Operation

A solenoid-operated, 4-way, 2-position spool-type, direct-acting, screw-in hydraulic cartridge valve. In the de-energized mode the WEA0.S08 blocks flow at all ports. In the energized mode the valve's spool shifts to open 1 to 2 and 3 to 4. The rigid design using a 1-piece body contributes to minimize the effect of eccentricities in cavity and provides great reliability. Low pressure drop thanks to optimized paths



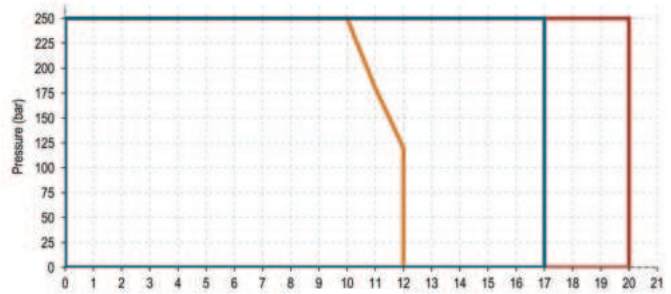
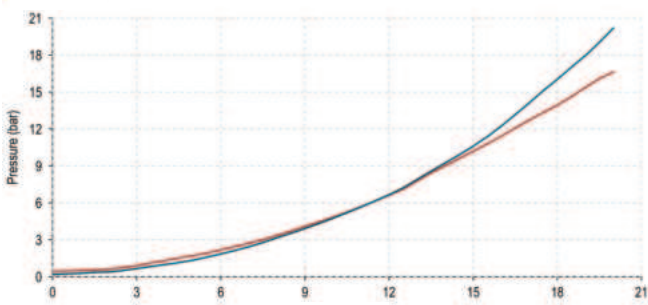
Hydraulic Symbol



Technical Data

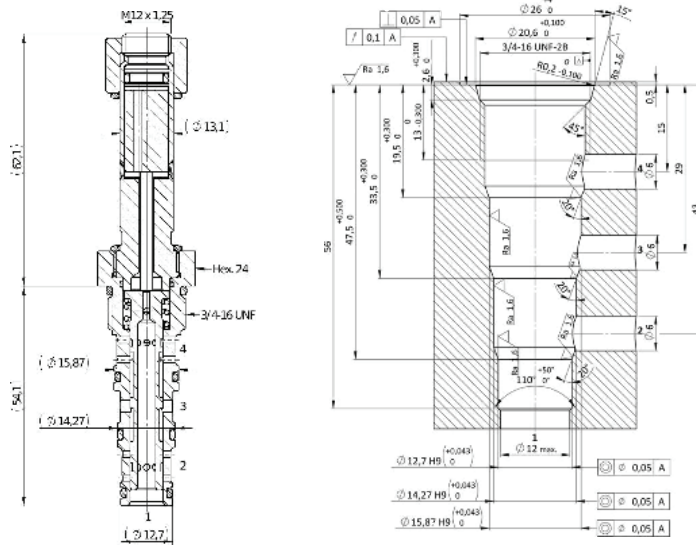
| | |
|------------------------------|---|
| Maximum operating pressure | 250 Bar |
| Maximum flow | 12 LPM |
| Maximum internal leakage | 150 cm ³ / min @ 250 Bar |
| External component treatment | Zn/Fe - standard (96h) Zn/Ni (720h) |
| O-ring Temperature Range | -30° C to 110° C (standard sealing NBR - BUNA-N) |
| Oil Temperature Range | -30° C to 110° C |
| Fluids | Mineral - based or synthetics with lubricating properties |
| Viscosities | 7.4 to 420 cSt |
| Minimum pull-in voltage | 85% of nominal |
| Filtration | 20/18/15 ISO 4406 (maximum filtration admitted) |
| Orientation | No restrictions |
| Installation torque | 25 - 30 Nm (Hex. 24) |
| Oil testing condition | ISO VG 46 cSt |
| Seal kit code | SLKT.065 & SLKT.027 (coil) |
| Coil | 22W |
| Weight | 0.160 kg |

 Performance Curve



 Dimensional Drawing

Cross Section and Cavity Details



 Ordering Code

W E • A 0 • S 0 8 • 0 * • D 0 0

valve basic code

Cavity
S08 = 3/4 - 16 UNF with
ø15.87 and ø14.27
and ø12.7 nose sizes.

Marking
0 = standard factory
marking. customized
marking can be done
upon request

Flow path
4 to 1
(de-energized)
2 to 1 and 3 to 4
(energized)

Spring range

| Model Code | Type of Override |
|------------|------------------|
| 0 | No Override |
| 3 | Push Pin |
| 4 | Push knob |
| 8 | Screw |

NOTE: All Solenoid cartridge valves listed in the present catalogue are designed to work with D.C. power supply. To work with A.C. power supply, a RAC coil and connector with rectifier must be used. For any additional information, please contact your Sales contact representative.