

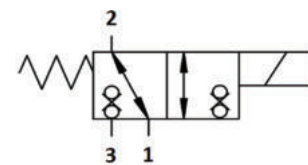


## WE.I0.S08 Valve Series

### SAE Cartridge – 250 Bar Directional Valve – 3/2 Seated Type]

#### Description & Operation

A Solenoid operated, 3 way 2 positions, seated type, direct acting, bi-directional blocking, screw-in hydraulic directional cartridge valve. In the de-energized mode, the WE.I0.S08 allows flow bi-directionally between ports 1 and 2, while blocking flow at 3. In the energized mode, bi-directional flow is allowed between ports 3 and 2, while flow is blocked at 1 with extremely low leakage. Even if port 1 and 3 may be fully pressurized they are not intended to be used as the inlet. The rigid design using a 1-piece body contributes to minimize the effect of eccentricities in cavity and provides great reliability. Low pressure drop thanks to optimized flow path.

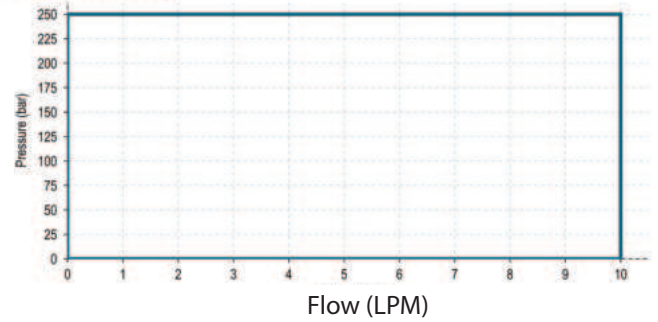
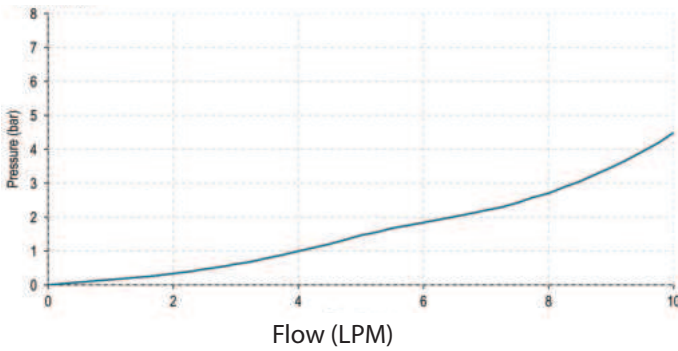


Hydraulic Symbol

#### Technical Data

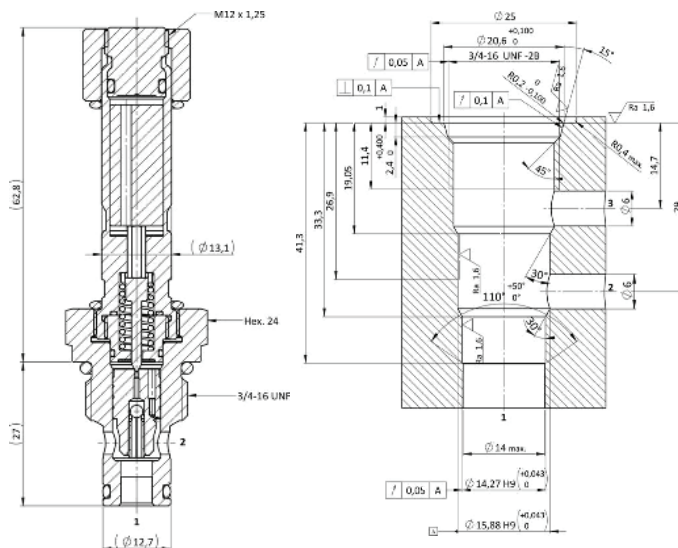
Maximum operating pressure	250 Bar
Maximum flow	10 LPM
Maximum internal leakage	0.25 cm <sup>3</sup> / min @ 250 Bar
External component treatment	Zn/Fe - standard (96h) Zn/Ni (720h)
O-ring Temperature Range	-30° C to 110° C (standard sealing NBR - BUNA-N)
Oil Temperature Range	-30° C to 110° C
Fluids	Mineral - based or synthetics with lubricating properties
Viscosities	7.4 to 420 cSt
Minimum pull-in voltage	85% of nominal
Filtration	20/18/15 ISO 4406 (maximum filtration admitted)
Orientation	No restrictions
Installation torque	35 - 40 Nm (Hex. 24)
Oil testing condition	ISO VG 46 cSt
Seal kit code	SLKT.076 & SLKT.070 (coil)
Coil	22W
Weight	0.231kg

 **Performance Curve**



 **Dimensional Drawing**

**Cross Section and Cavity Details**



 **Ordering Code**

**W E • 1 0 • S 0 8 • 0 \* • 0 0 0**  
 valve basic code

**Cavity**  
**S08** = 3/4- 16 UNF with  
 ø15.87 and ø14.27  
 nose sizes

**Marking**  
**0** = standard factory  
 marking, customized  
 marking can be done  
 upon request

**Spring range**

Model Code	Type of Override
0	No Override
3	Push Pin
4	Push knob
8	Screw

**NOTE:** All Solenoid cartridge valves listed in the present catalogue are designed to work with D.C. power supply. To work with A.C. power supply, a RAC coil and connector with rectifier must be used. For any additional information, please contact your Sales contact representative.

**SOLENOID VALVES**