



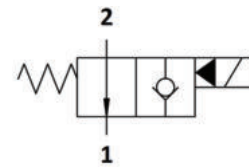
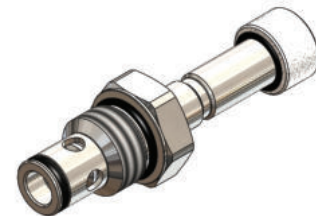
## WE.J0.S10 Valve Series

**SAE Cartridge – 350 Bar**

**NO Single Lock Pilot Operated – Poppet Type**

### Description & Operation

Solenoid operated, 2-way 2-positions, normally open, piloted poppet type, screw-in cartridge valve. Typically used as a blocking or load holding device for high pressure circuits. When the coil is de-energized, the WEJ0. S10 allows flow from 2 to 1, while flow from 1 to 2 is severely restricted. When the coil is energized the valve closes, blocking flow from 2 to 1. In this mode, flow from 1 to 2 is allowed once the pressure overcomes the force of the solenoid. The rigid design using a 1-piece body contributes to minimize the effect of eccentricities in cavity and provides great reliability. Low pressure drop thanks to optimized flow path

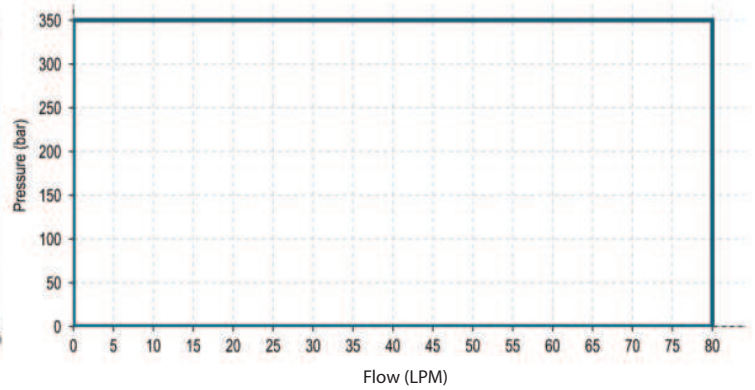
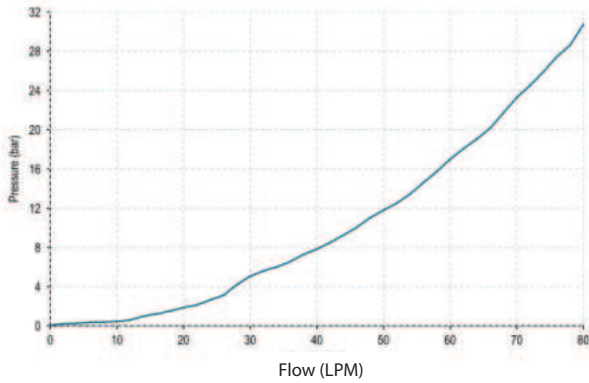


Hydraulic Symbol

### Technical Data

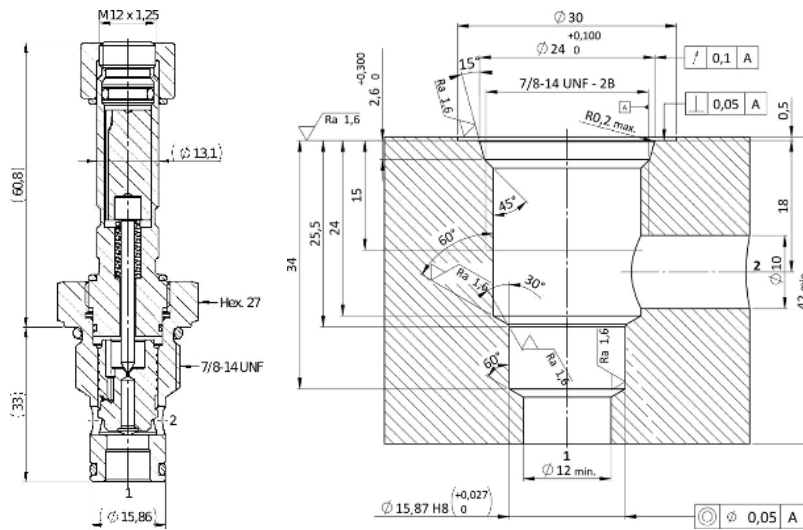
|                              |   |
|------------------------------|---|
| Maximum operating pressure   | 350 Bar   |
| Maximum flow                 | 80 LPM  |
| Maximum internal leakage     | 0.25 cm <sup>3</sup> / min @ 350 bar                      |
| External component treatment | Zn/Fe - standard (96h) Zn/Ni (720h)                       |
| Switch ON Time               | 20 ms   |
| Switch OFF Time              | 30 ms   |
| O-ring Temperature Range     | -30° C to 110° C (standard sealing NBR - BUNA-N)          |
| Oil Temperature Range        | -30 C to 110° C   |
| Fluids                       | Mineral - based or synthetics with lubricating properties |
| Viscosities                  | 7.4 to 420 cSt  |
| Minimum pull-in voltage      | 85% of nominal  |
| Filtration                   | 20/18/15 ISO 4406 (maximum filtration admitted)           |
| Orientation                  | No restrictions   |
| Installation torque          | 65 - 75 Nm (Hex. 27)                                      |
| Oil testing condition        | ISO VG 46 cSt   |
| Seal kit code                | SLKT.032 & SLKT.027 (coil)                                |
| Coil                         | 22W   |
| Weight                       | 0.164 kg  |

 **Performance Curve**



 **Dimensional Drawing**

**Cross Section and Cavity Details**



 **Ordering Code**

**W E • J O • S I O • O \* • N O O**

valve basic code

**Cavity**  
S10 = 7/8 - 14 UNF  
with  $\varnothing 15.86$  nose size

**Marking**  
0 = standard factory marking. customized marking can be done upon request

**Manual Override**

| Model Code | Type of Override |
|------------|------------------|
| 0          | No Override      |
| 2          | Push & Twist     |
| 3          | Push Pin         |
| 4          | Push Knob        |
| 8          | Screw            |

**NOTE:** All Solenoid cartridge valves listed in the present catalogue are designed to work with D.C. power supply. To work with A.C. power supply, a RAC coil and connector with rectifier must be used. For any additional information, please contact your Sales contact representative.