



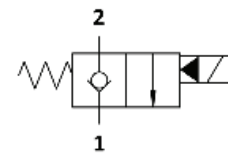
WE.S0.S10 Valve Series

SAE Cartridge – 350 Bar

NC Single Lock Pilot Operated – Poppet Type

Description & Operation

Solenoid operated, 2-way 2-positions, normally closed, piloted poppet type, screw-in cartridge valve. Typically used as a blocking or load holding device for high pressure circuits. When the coil is de-energized, the WES0. S10 acts as check valve allowing free flow from 1 to 2, while blocking from 2 to 1. When the coil is energized the poppet lifts and opens the 2 to 1 flow path. In this operation mode, flow from 1 to 2 is severely restricted. The rigid design using a 1-piece body contributes to minimize the effect of eccentricities in cavity and provides great reliability

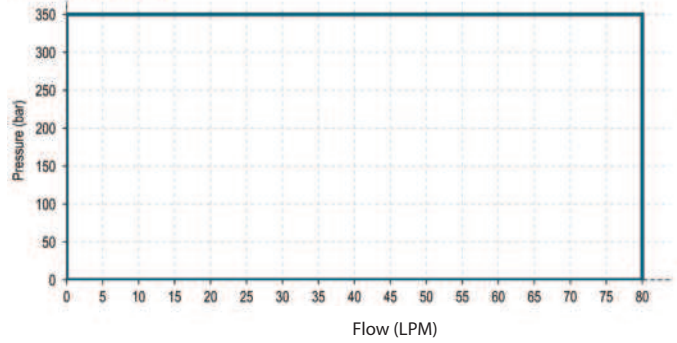
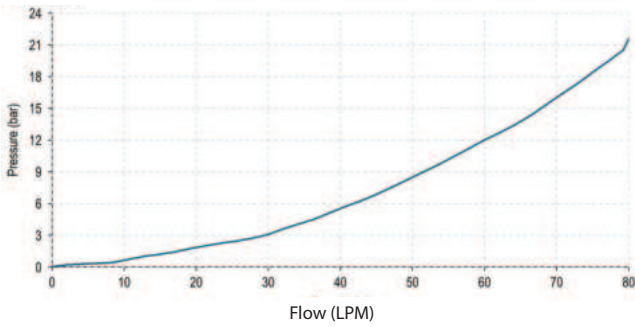


Hydraulic Symbol

Technical Data

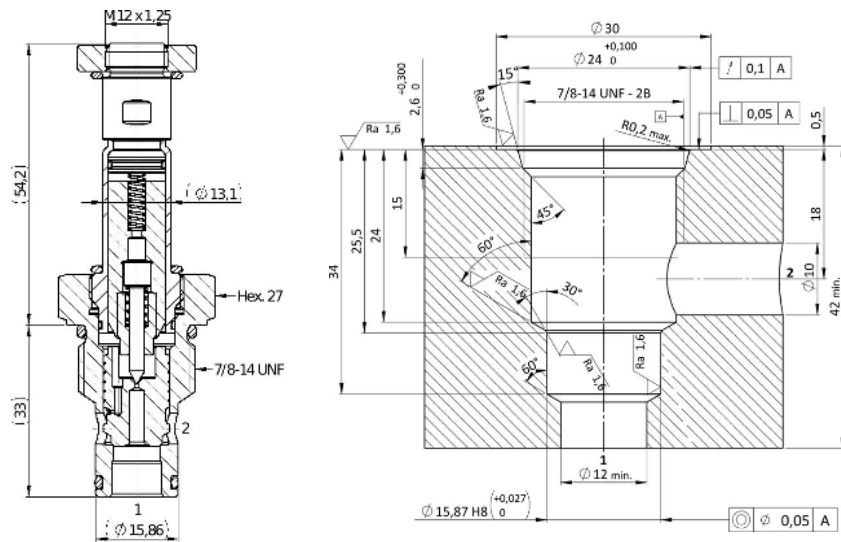
| | |
|------------------------------|---|
| Maximum operating pressure | 350 Bar |
| Maximum flow | 80 LPM |
| Maximum internal leakage | 0.25 cm ³ / min @350 Bar |
| External component treatment | Zn/Fe - standard (96h) Zn/Ni (720h) |
| Switch ON Time | 30 ms |
| Switch OFF Time | 50 ms |
| O-ring Temperature Range | -30° C to 110° C (standard sealing NBR - BUNA-N) |
| Oil Temperature Range | -30 C to 110 C |
| Fluids | Mineral - based or synthetics with lubricating properties |
| Viscosities | 7.4 to 420 cSt |
| Minimum pull-in voltage | 85% of nominal |
| Filtration | 20/18/15 ISO 4406 (maximum filtration admitted) |
| Orientation | No restrictions |
| Installation torque | 65 - 75 Nm (Hex. 27) |
| Oil testing condition | ISO VG 46 cSt |
| Seal kit code | SLKT.032 & SLKT.027 (COIL) |
| Coil | 18W |
| Weight | 0.139 kg |

 Performance Curve



 Dimensional Drawing

Cross Section and Cavity Details



 Ordering Code

W E • S O • S I O • O * • N O O

valve basic code

Cavity
S10 = 7/8 - 14 UNF
with $\varnothing 15.86$ nose size

Marking
0 = standard factory
marking. customized
marking can be done
upon request

Manual Override

| Model Code | Type of Override |
|------------|------------------|
| 0 | No Override |
| 1 | Screw |
| 2 | Push and Twist |
| 6 | Pull And Hold |

NOTE: All Solenoid cartridge valves listed in the present catalogue are designed to work with D.C. power supply. To work with A.C. power supply, a RAC coil and connector with rectifier must be used. For any additional information, please contact your Sales contact representative.