

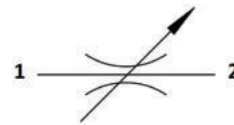
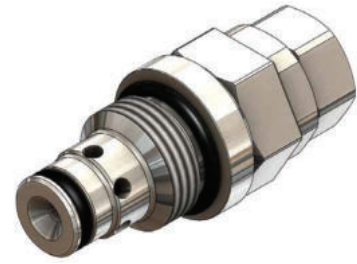


## FR.T4.S08 Valve Series

**SAE Cartridge - 350 Bar**  
**Direct acting - Poppet Type**

### Description & Operation

A cartridge style, screw in, non pressure compensated, adjustable flow restrictor valve. Once the flow is adjusted to desired value, both the 1 to 2 and 2 to 1 flow paths are permitted. Smaller sealing area for finer flow adjustment

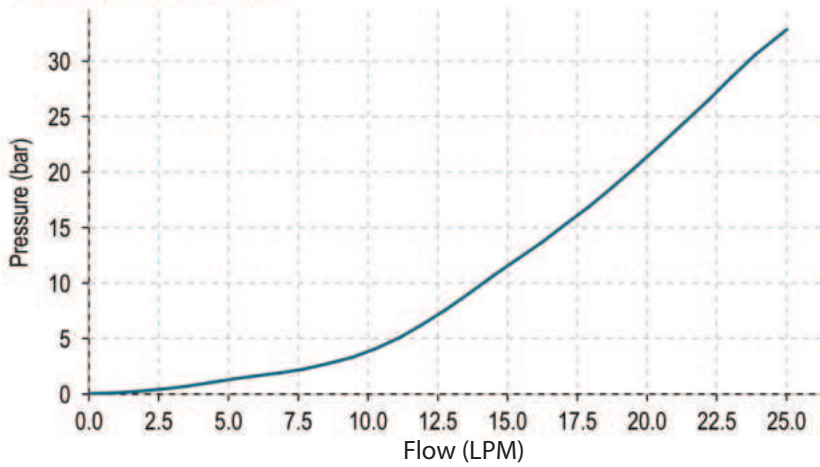


Hydraulic Symbol

### Technical Data

Maximum operating pressure	350 bar
Maximum flow	25 LPM
External component treatment	Zn/Fe - standard (96h) Zn/Ni (720h)
O-ring Temperature Range	-30° C to 110° C (standard sealing NBR - BUNA-N)
Oil Temperature Range	-30° C to 110° C
Fluids	Mineral - based or synthetics with lubricating properties
Viscosities	7.4 to 420 cSt
Filtration	20/18/15 ISO 4406 (maximum filtration admitted)
Orientation	No restrictions
Installation torque	40 - 45 Nm Hex 21
Oil testing condition	ISO VG 46 cSt
Seal kit code	SLKT.003
Weight	0.100 kg

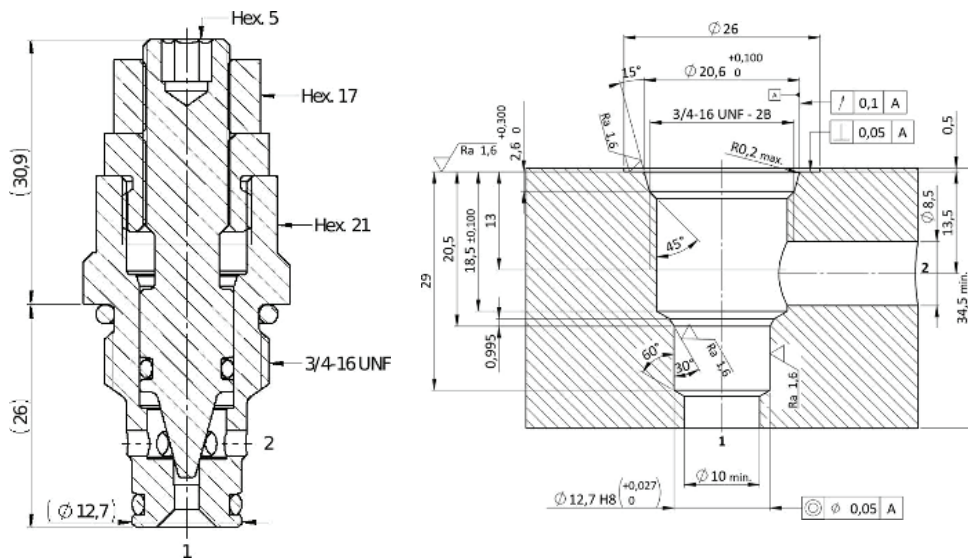
**Performance Curve**



**Note:**  
The p/Q performance illustrated in the chart are the same in both directions.  
p/Q curve is recorded at TOil = 40°C and 46 cSt.

**Dimensional Drawing**

**Cross Section and Cavity Details**



**Ordering Code**

**F R • T 4 • S 0 8 • 0 \* • \* \***

valve basic code

Option 1=Fine Regulation

**Cavity**  
S08=3/4 - 16 UNF with  
∅ 12.7 nose sizes

**Marking**  
0= standard factory  
marking Customized  
marking can be done  
upon request

**Flow adjustment**  
0=Hex Allen Head  
v=Top Plastic Knob  
w=Top Plastic Knob+Plastic counter Knob

**FLOW CONTROL**