



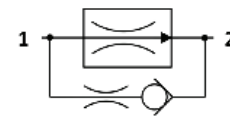
FR.S0.G38 Valve Series

GAS Cartridge – 250 Bar

Direct acting – Pressure Compensated

Description & Operation

A direct acting, screw-in insert type, 2-way pressure compensated flow control valve. The flow rate of this valve in the 1 to 2 flow path is largely independent of the system pressure and is determined by the dimension of a calibrated orifice. The valve cannot be adjusted for variable flow output. Free flow in the 2 to 1 path is allowed and not pressure compensated

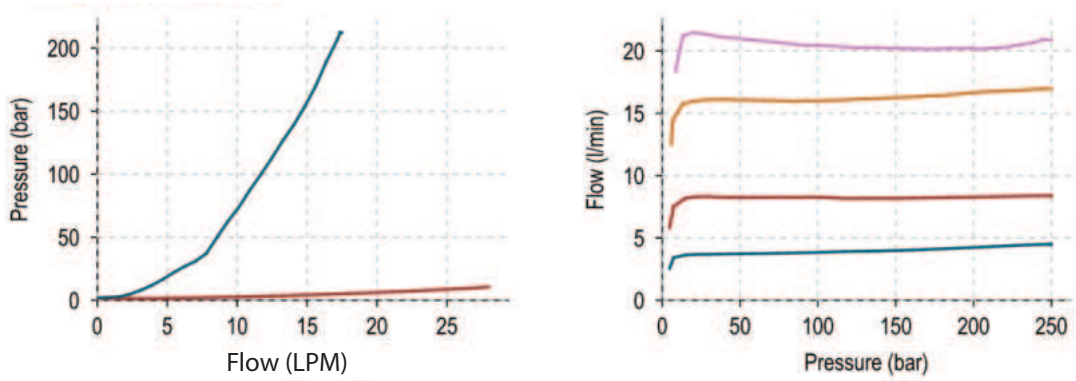


Hydraulic Symbol

Technical Data

| | |
|------------------------------|---|
| Maximum operating pressure | 250 Bar (2-→1 max working pressure 210 bar) |
| Maximum flow | 28 LPM (in flow control function) |
| External component treatment | Oxide burnished |
| Oil Temperature Range | -30° C to 110° C |
| Fluids | Mineral - based or synthetics with lubricating properties |
| Viscosities | 7.4 to 420 cSt |
| Filtration | 20/18/15 ISO 4406 (maximum filtration admitted) |
| Orientation | No restrictions |
| Installation torque | 5-8 Nm |
| Oil testing condition | ISO VG 46 cSt |
| Weight | 0.027 kg |

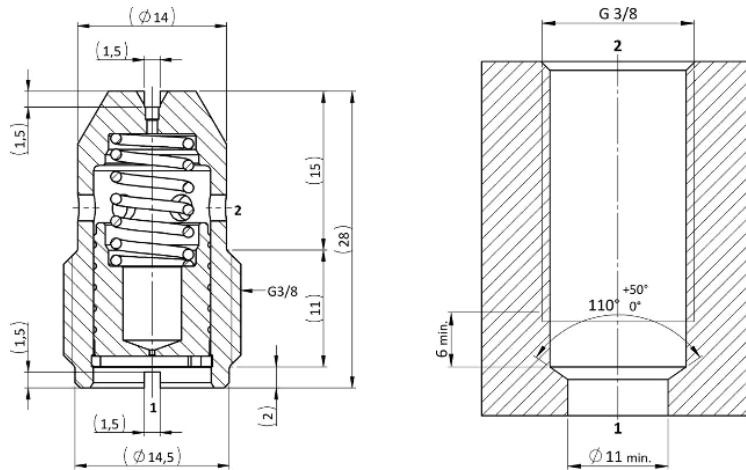
 **Performance Curve**



Note: The performance chart illustrates flow handling capacity in the pressure compensated mode for a few significant flow settings. p/Q curves are recorded at TOil = 40°C and 46 cSt.

 **Dimensional Drawing**

Cross Section and Cavity Details



 **Ordering Code**

F R • S O • G 3 8 • 0 * • * * *

valve basic code

Cavity
G38=GAS G3/8

Fixed flow setting (l/min with 1 decimal)

| | | | |
|----------|-----|----------|-----|
| 3 l/min | 030 | 11 l/min | 110 |
| 4 l/min | 040 | 14 l/min | 150 |
| 5 l/min | 050 | 16 l/min | 160 |
| 6 l/min | 060 | 18 l/min | 180 |
| 7 l/min | 070 | 20 l/min | 200 |
| 8 l/min | 080 | 23 l/min | 230 |
| 9 l/min | 090 | 28 l/min | 280 |
| 10 l/min | 100 | | |

Note = customized fixed flow can be provided upon request