



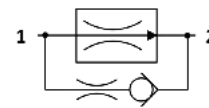
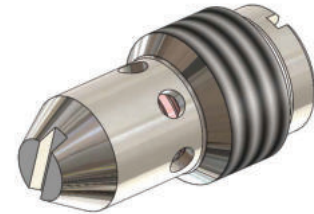
## FR.S0.G14 Valve Series

### GAS Cartridge - 250 Bar

### Direct acting - Pressure Compensated

#### Description & Operation

A direct acting, screw-in insert type, 2-way pressure compensated flow control valve. The flow rate of this valve in the 1 to 2 flow path is largely independent of the system pressure and is determined by the dimension of a calibrated orifice. The valve cannot be adjusted for variable flow output. Free flow in the 2 to 1 path is allowed and not pressure compensated

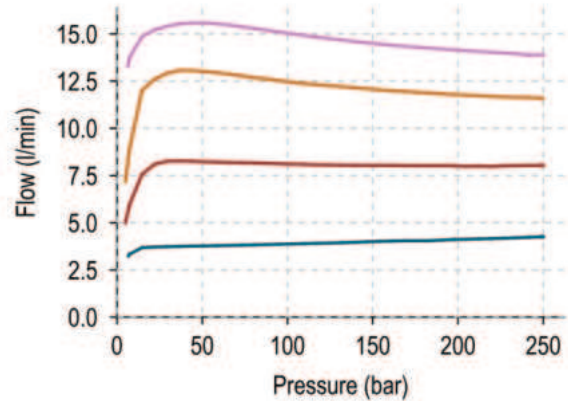
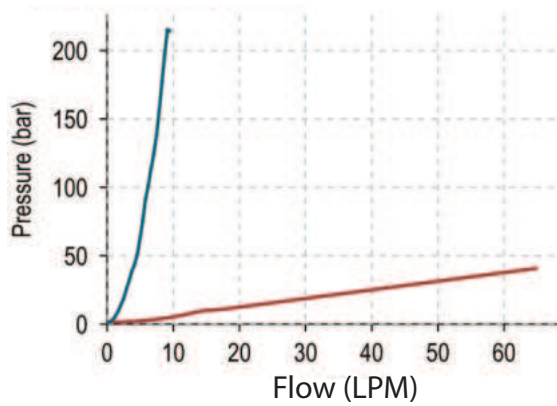


Hydraulic Symbol

#### Technical Data

Maximum operating pressure	250 Bar (2->1 max working pressure 210 bar)
Maximum flow	15 LPM (in flow control function)
External component treatment	Oxide burnished
Oil Temperature Range	-30° C to 110° C
Fluids	Mineral - based or synthetics with lubricating properties
Viscosities	7.4 to 420 cSt
Filtration	20/18/15 ISO 4406 (maximum filtration admitted)
Orientation	No restrictions
Installation torque	1-3 Nm
Oil testing condition	ISO VG 46 cSt
Weight	0.013 kg

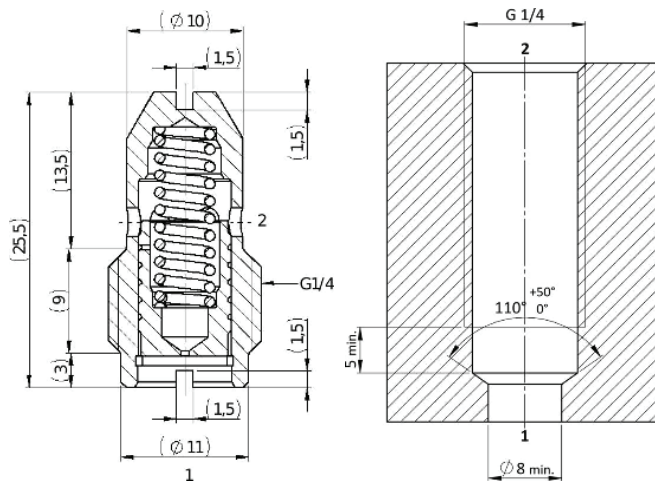
 **Performance Curve**



**Note:** The performance chart illustrates flow handling capacity in the pressure compensated mode for a few significant flow settings. p/Q curves are recorded at T<sub>oil</sub> = 40°C and 46 cSt.

 **Dimensional Drawing**

**Cross Section and Cavity Details**



 **Ordering Code**

**F R • S O • G 1 4 • 0 \* • \* \* \***

valve basic code

**Flow Settings**  
0=2 - 15 l/min  
1=0.5 - 1.8 l/min

**Cavity**  
G14=GAS G1/4

**Note** = customized fixed flow can be provided upon request

**Fixed flow setting** (l/min with 1 decimal)

FRCO		FRC1	
2 l/min	020	0.6 l/min	006
3 l/min	030	0.8 l/min	008
4 l/min	040	1.0 l/min	010
5 l/min	050	1.2 l/min	012
6 l/min	060	1.4 l/min	014
7 l/min	070	1.6 l/min	016
8 l/min	080	1.8 l/min	018
9 l/min	090		
10 l/min	100		
11 l/min	110		
12 l/min	120		
15 l/min	150		

**Steel wire option**  
W = if we requested  
leave blank if not.