

GAUGE ISOLATOR – IN LINE AND 90° TYPE



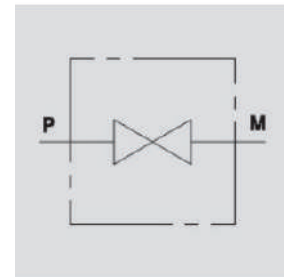
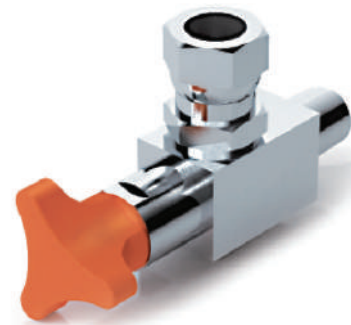
EM

Pressure 600 Bar

Description & Operation

These valves are used to open or close the oil flow to the gauge in an hydraulic system.

Screw the gauge isolator to the hydraulic system to the male port P and fix the gauge to female port M. In order to open or close the flow turn the knob.



Hydraulic Symbol

Lorem ipsum

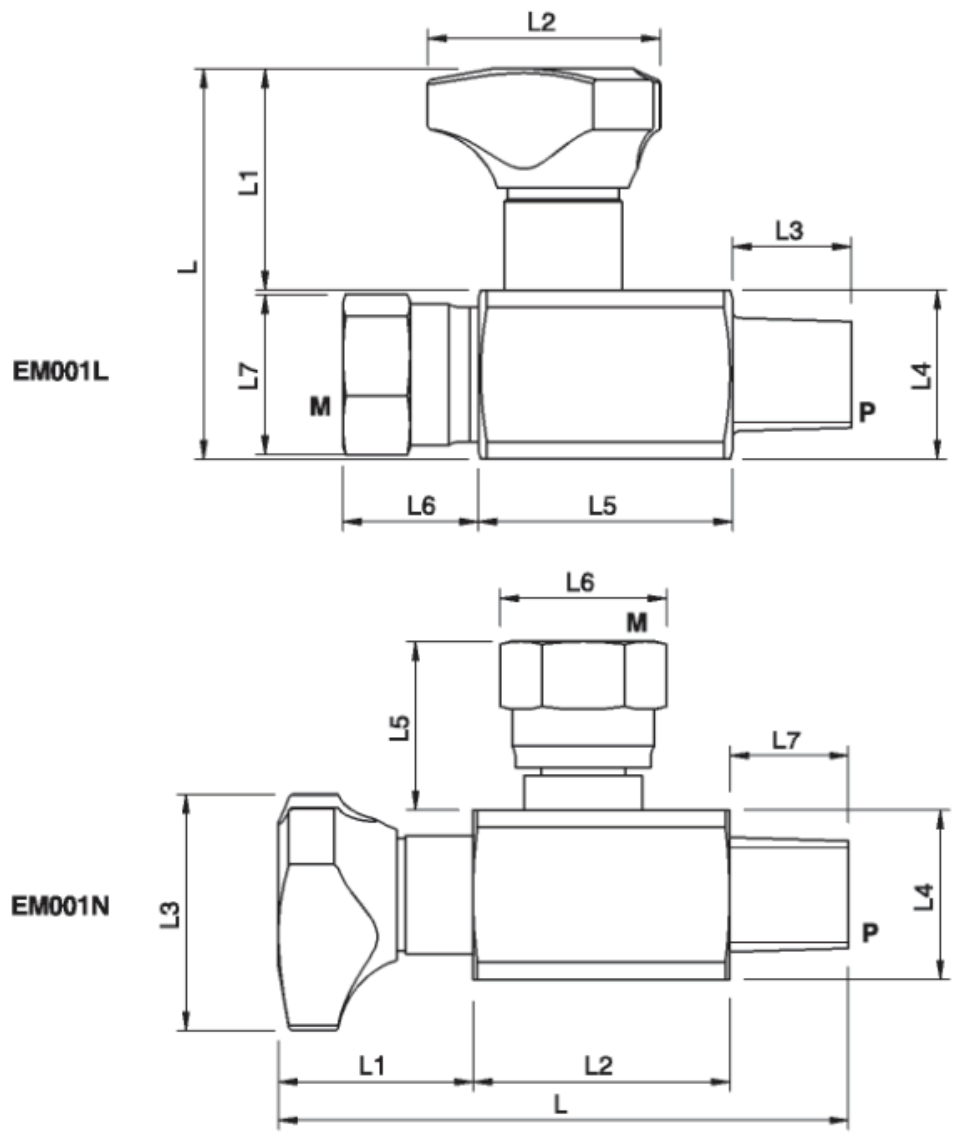
Technical Data

Maximum Flow	/
Maximum Operating Pressure	600 Bar
Body Material	Nickel Steel
Internal parts	/
External Component treatment	/
Oil Temperature	50 Deg. C
Fluids	Mineral based or synthetics with lubricating properties
Viscosity	30 cSt
Standard Sealing	NBR-Buna N
Filtration	20/18/15 ISO 4406 (Max. Filtration admitted)
Orientation / Mounting	Inline
Weight	See Ordering details

Specifications

Type	Working Pressure	Max. Pressure
	Bar	Bar
EML 1/4" MF	400	600
EM90" 1/4" MF	400	600

 **Dimensional Drawing**



 **Ordering Details**

Code	Type	P	M	L	L1	L2	L3	L4	L5	L6	L7	Weight
		BSPT	BSP	mm	mm	mm	mm	mm	mm	mm	mm	Kg
R-EM001L	EML 1/4" MF	M 1/4"	F 1/4"	49.7	30.7	30.3	13.8	19	30	16.2	17	0.142
R-EM001N	EM90 1/4" MF	M 1/4"	F 1/4"	72	29.5	29	30.3	19	16.2	17	13.8	0.140

DUAL CROSS RELIEF VALVES