



# MANUAL EMERGENCY VALVE

## VEM

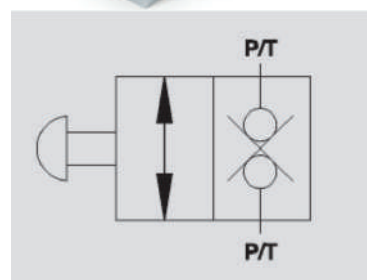
**Flow Upto 70 LPM**  
**Pressure 350 Bar**



### Description & Operation

This pushbutton valve allows oil flow in hydraulic circuit by means of a slider. Once the manual button is pushed oil flows from P to T or vice versa. Typically used as emergency valves on lifting equipment.

Connect the ports P and T to either control valve or circuit. When the button is passed there is free flow, otherwise the flow is blocked in both directions.



Hydraulic Symbol



### Technical Data

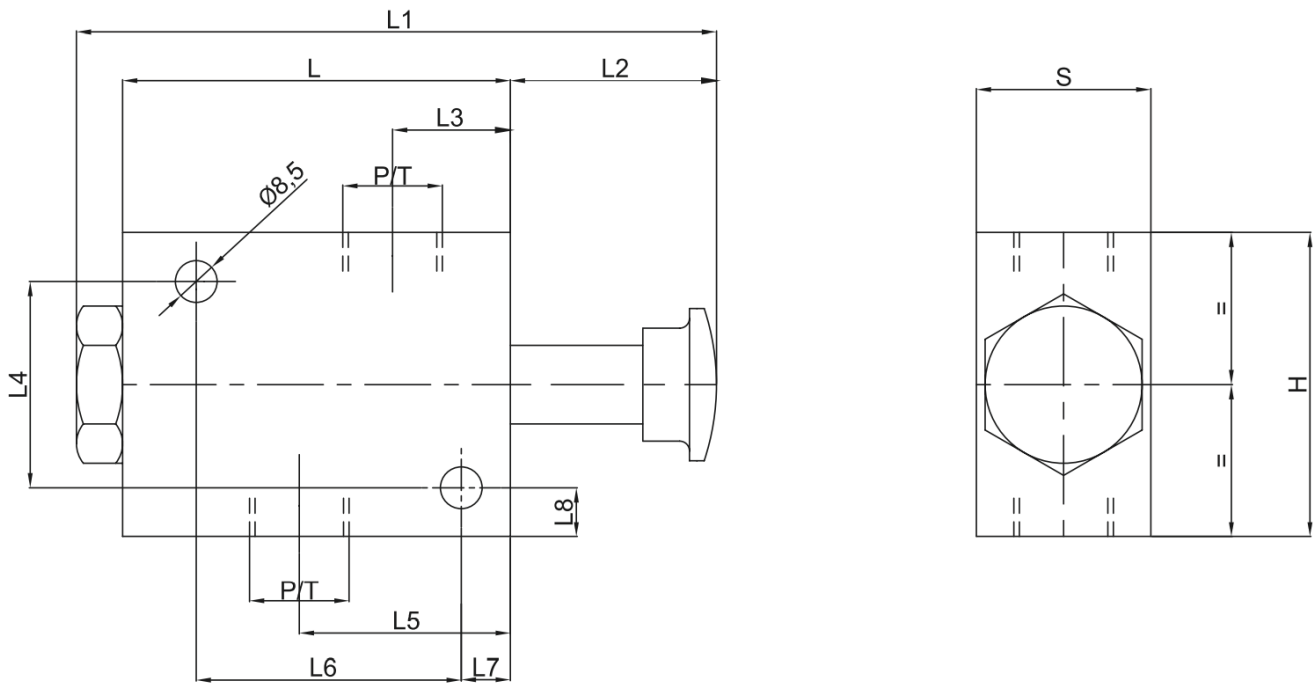
Maximum Flow	70 LPM
Maximum Operating Pressure	350 Bar
Body Material	Steel
Internal parts	Hardened and Ground steel
External Component treatment	Zn/Fe - standard (96h) / Zn/Ni (720h)
Oil Temperature	50 Deg. C
Fluids	Mineral based or synthetics with lubricating properties
Viscosity	30 cSt
Standard Sealing	NBR-Buna N
Filtration	20/18/15 ISO 4406 ( Max. Filtration admitted)
Orientation / Mounting	Inline
Weight	See Ordering details



### Specifications

Type	Max Flow	Max Pressure
	LPM	Bar
VEM 1/2"	70	350

 **Dimensional Drawing**



 **Ordering Details**

Code	Type	P/T	L	L1	L2	L3	L4	L5	L6	L7	L8	H	S	Weight
		GAS	mm	mm	mm	mm	mm	mm	mm	mm	mm	mm	mm	Kg
R-V1320	VEM 1/2"	G 1/2"	79	130	42	24	42	43	54	10	10	62	35	1.220

**DUAL CROSS RELIEF VALVES**