

SINGLE ACTING PLOUGH OVERTURNING VALVES



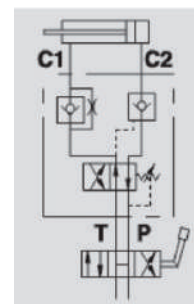
VRA SE

Maximum Exchange Pressure 200 Bar
Maximum 400 Bar

Description & Operation

This valve has been designed for use on cylinders for reversible ploughs to obtain the automatic oil flow reversal, and therefore the reversal of the hydraulic cylinder which rotates the plough. It is provided with a single pilot operated check valve which provides leakage control on the cylinder head side, only whilst the rod side must be secured on the plough's mechanical stops. This valve is not recommended for ploughs which rotate the frame upwards.

Connect C1 to the cylinder's rod side, C2 to the head side, P and T to the machine's pressure flow. Thanks to its shape, it can be assembled in-line on the hydraulic cylinder or directly fixed onto the plough by the threaded hole in the valve body.



Hydraulic Symbol

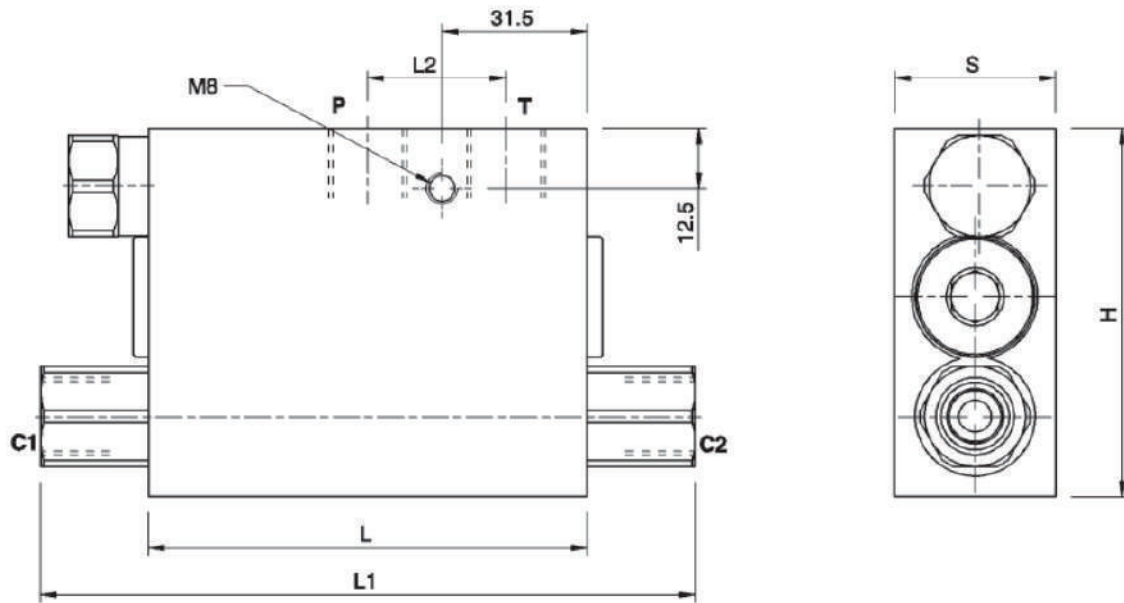
Technical Data

Maximum Exchange Pressure	200 Bar
Maximum Pressure	400 Bar
Body Material	Steel
Internal parts	Hardened and Ground steel
External Component treatment	Zn/Fe - standard (96h) / Zn/Ni (720h)
Oil Temperature	50 Deg. C
Fluids	Mineral based or synthetics with lubricating properties
Viscosity	30 cSt
Standard Sealing	NBR-Buna N
Filtration	20/18/15 ISO 4406 (Max. Filtration admitted)
Orientation / Mounting	Inline
Weight	See Ordering details

Specifications

Type	Max Exchange Pressure	Max Pressure
	Bar	Bar
VRA 40/50 SE	200	400
VRA 60/80 SE	200	400

 **Dimensional Drawing**



 **Ordering Details**

Code	Type	C1-C2 P-T	L	L1	L2	H	S	Weight
		GAS	mm	mm	mm	mm	mm	Kg
R-V0278	VRA 40/50 SE	G 3/8"	94	142	30	80	35	1.990
R-V0280	VRA 60/80 SE	G 3/8"	94	142	30	80	35	1.990

PLOUGH OVERTURNING VALVES