

PUSHBUTTON END OF STROKE VALVES, NORMALLY OPEN



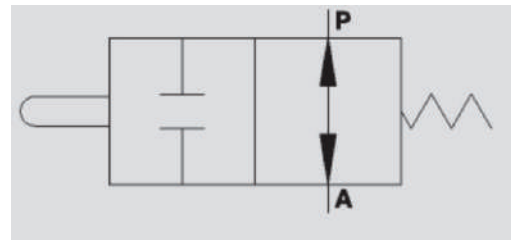
VF-NA

Flow Upto 60 LPM
Pressure 350 Bar

Description & Operation

This valve is used to block oil passage in a hydraulic circuit (normally opened valve). The valve closes by mechanically pushing the slider.

Connect P to the circuit and A directly to tank. The mounting scheme can vary according to the use.



Hydraulic Symbol

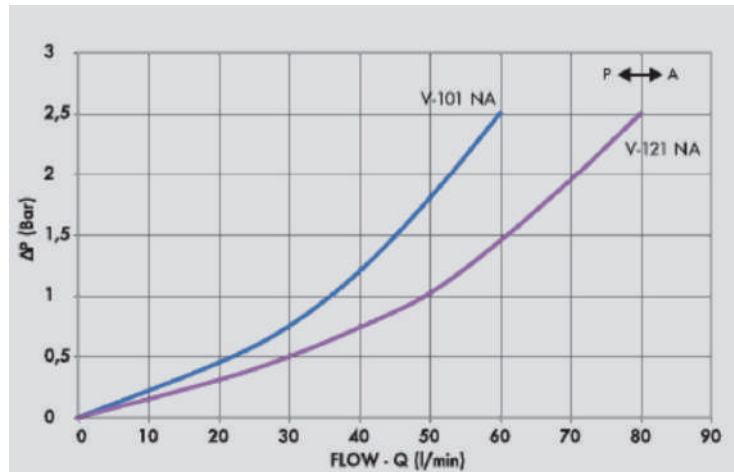
Technical Data

Maximum Flow	60 LPM
Maximum Pressure	350 Bar
Body Material	Steel
Internal parts	Hardened and Ground steel
External Component treatment	Zn/Fe - standard (96h) / Zn/Ni (720h)
Oil Temperature	50 Deg. C
Fluids	Mineral based or synthetics with lubricating properties
Viscosity	30 cSt
Standard Sealing	NBR-Buna N
Filtration	20/18/15 ISO 4406 (Max. Filtration admitted)
Orientation / Mounting	Inline
Weight	See Ordering details

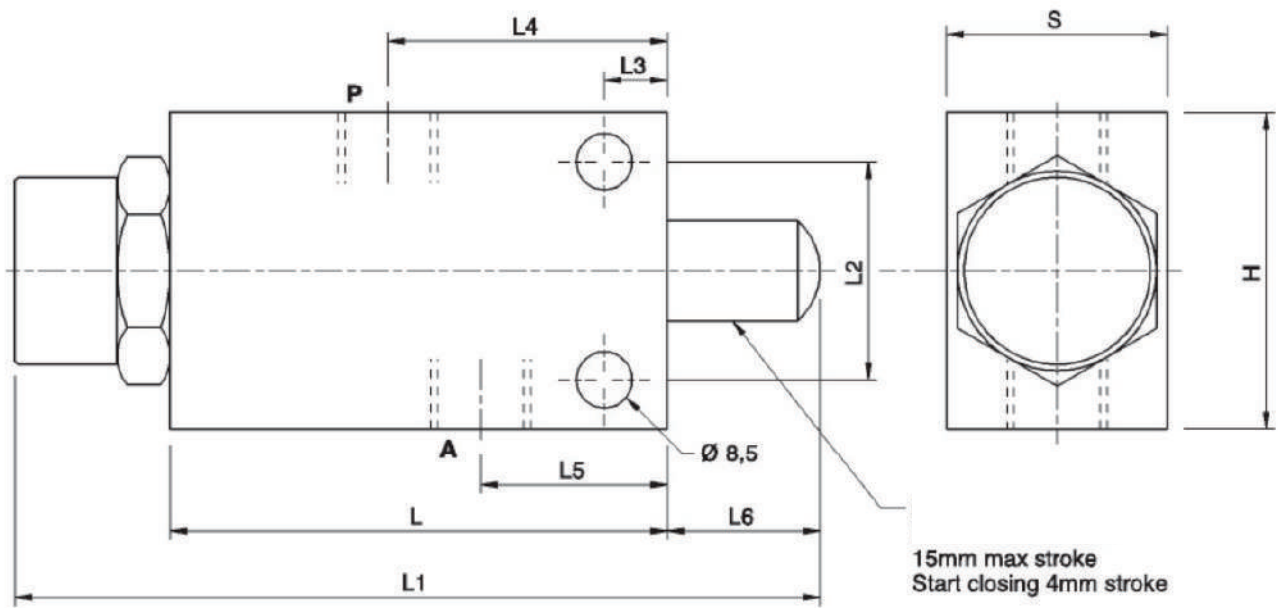
Specifications

Type	Max.Flow	Max.Pressure
	LPM	Bar
V - 101 3/8" NA	45	350
V - 121 1/2" NA	60	350

 **Performance Curve**



 **Dimensional Drawing**



 **Ordering Details**

Code	Type	A-P	L	L1	L2	L3	L4	L5	L6	H	S	Weight
		GAS	mm	mm	mm	mm	mm	mm	mm	mm	mm	Kg
R-V0817	V-101 3/8" NA	G 3/8"	80	129	35	8	53	26	24	62	35	1.220
R-V0818	V-121 1/2" NA	G 1/2"	80	129	35	8	53	26	24	62	35	1.250

END OF STROKE VALVES