

PUSH BUTTON END STROKE VALVES, NORMALLY CLOSED



VF-NC

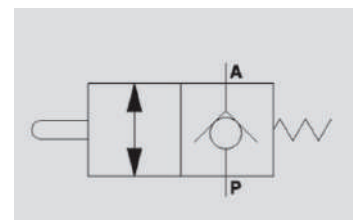
Flow Upto 100 LPM
Pressure 350 Bar

Description & Operation

This valve is used to open the inlet to a hydraulic circuit (Valve normally closed). Once the spool is mechanically actuated, the flow is free from P to A. It can be principally used for:

- a) Setting the sequences of 2 actuators
- b) As an end of stroke valve, where the flow is connected to tank.

Connect P to the circuit and A directly to tank. The mounting scheme can vary according to the use.



Hydraulic Symbol

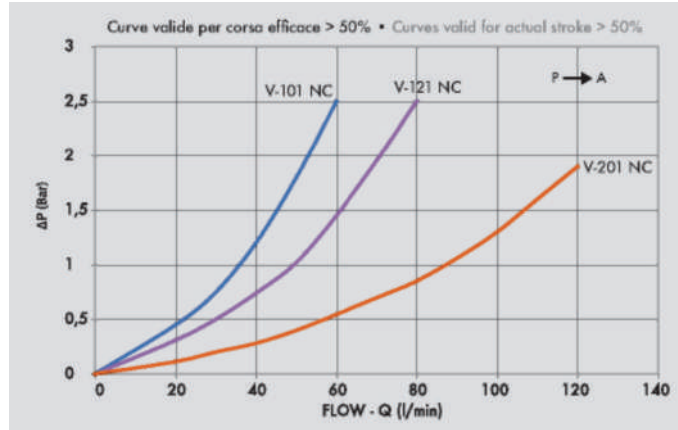
Technical Data

Maximum Flow	100 LPM
Maximum Pressure	350 Bar
Body Material	Steel
Internal parts	Hardened and Ground steel
External Component treatment	Zn/Fe - standard (96h) / Zn/Ni (720h)
Oil Temperature	50 Deg. C
Fluids	Mineral based or synthetics with lubricating properties
Viscosity	30 cSt
Standard Sealing	NBR-Buna N
Filtration	20/18/15 ISO 4406 (Max. Filtration admitted)
Orientation / Mounting	Inline
Weight	See Ordering details

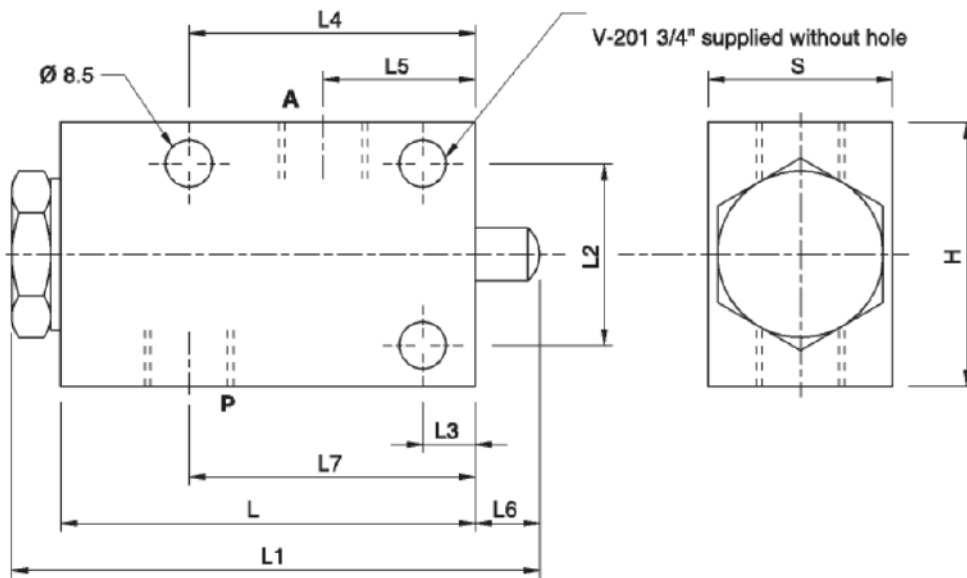
Specifications

Type	Max.Flow	Max.Pressure
	LPM	Bar
V - 101 3/8" NC	50	350
V - 121 1/2" NC	70	350
V - 201 3/4" NC	100	350

 **Performance Curve**



 **Dimensional Drawing**



 **Ordering Details**

Code	Type	A-P	L	L1	L2	L3	L4	L5	L6	L7	H	S	Weight
		GAS	mm	mm	mm	mm	mm	mm	mm	mm	mm	mm	Kg
R-V0827	V-101 3/8" NC	G 3/8"	80	105	35	10	55	30	14	55	50	35	0.962
R-V0828	V-121 1/2" NC	G 1/2"	80	105	35	10	55	28.5	14	55	50	35	0.934
R-V0829	V-201 3/4" NC	G 3/4"	88	115	50	20	68	23	14	61	70	45	1.580

END OF STROKE VALVES