

# BIDIRECTIONAL CHECK VALVES



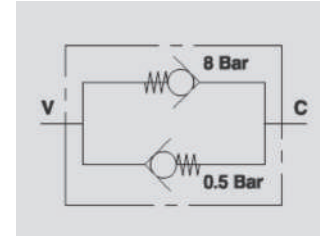
## VRC

**Flow Upto 55 LPM**  
**Pressure 350 Bar**



### Description & Operation

In the bidirectional check valves flow is controlled in both directions at different pressure setting. Connect V or C to the pressure flow according to the required function.



Hydraulic Symbol



### Technical Data

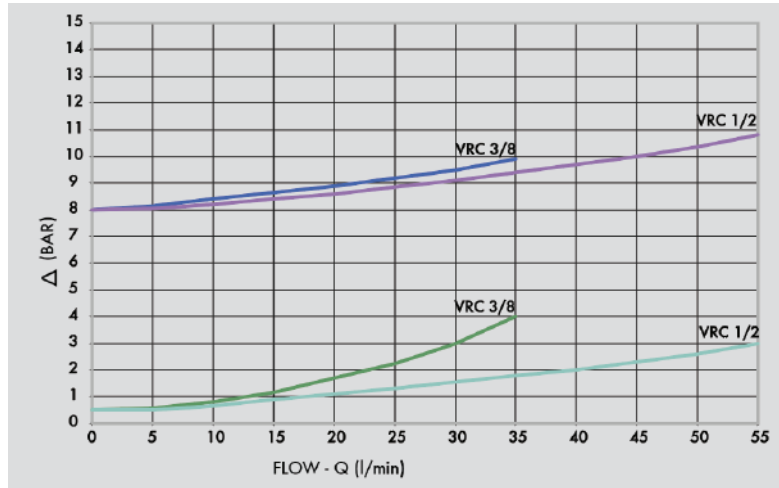
Maximum Flow	55 LPM
Maximum Pressure	350 Bar
Body Material	Steel
Internal parts	Hardened and Ground steel
External Component treatment	Zn/Fe - standard (96h) / Zn/Ni (720h)
Oil Temperature	50 Deg. C
Fluids	Mineral based or synthetics with lubricating properties
Viscosity	30 cSt
Standard Sealing	NBR-Buna N
Filtration	20/18/15 ISO 4406 ( Max. Filtration admitted)
Orientation / Mounting	Inline
Weight	See Ordering details



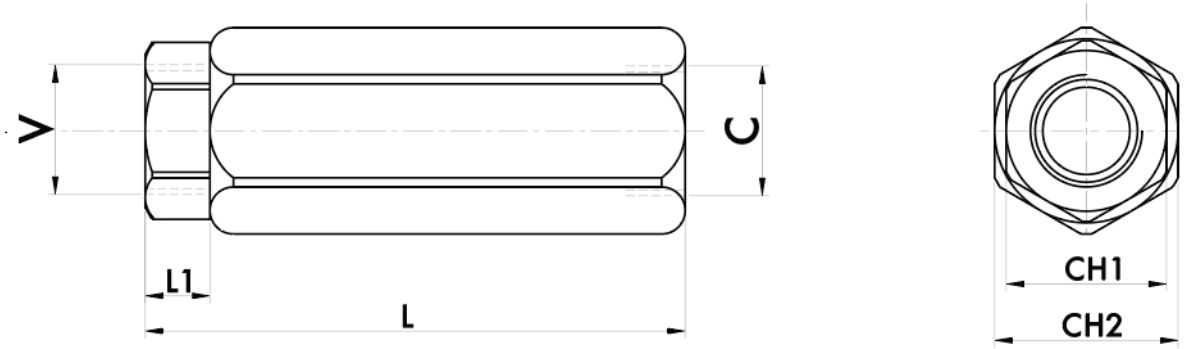
### Specifications

Type	Max.Flow	Max.Pressure	Cr.Pressure	Cr.Pressure
	LPM	Bar	V-C Bar	C-V Bar
VRC 3/8"	35	350	0.5	8
VRC 1/2"	55	350	0.5	8

 **Performance Curve**



 **Dimensional Drawing**



 **Ordering Details**

Code	Type	V-C	L	L1	CH1	CH2	Weight
		GAS	mm	mm	mm	mm	mm
R-V0606	VRC 3/8"	G 3/8"	100	11	27	30	0.448
R-V0616	VRC 1/2"	G 1/2"	118	26	27	30	0.448

**CHECK VALVES**