

# INTEGRATED CHECK VALVE



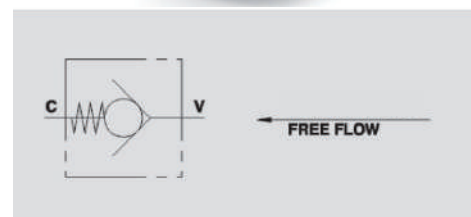
## VUI

**Flow Upto 80 LPM**  
**Pressure 350 Bar**

### Description & Operation

Check valve allow free flow in one direction and is blocks the flow in the reverse direction. The small dimesions and insert configuration make these valves ideal for installation into custom designed hydraulic integrated circuits.

Screw the valve into the right cavity keeping into consideration that the free flow direction is from V to C.



Hydraulic Symbol

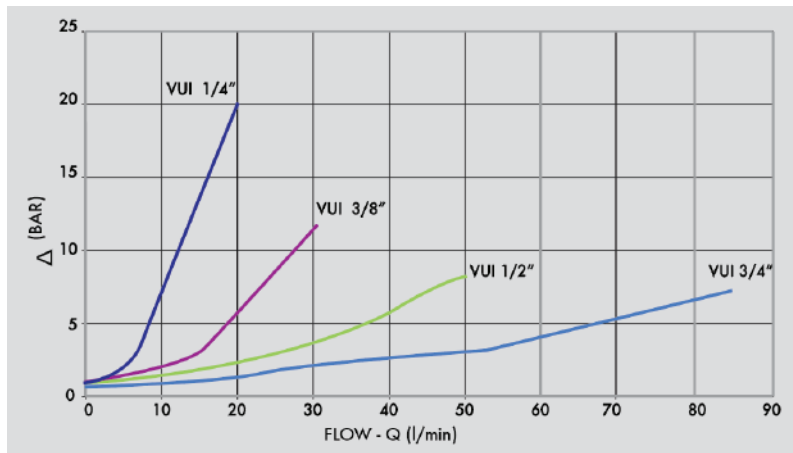
### Technical Data

Maximum Flow	80 LPM
Maximum Pressure	350 Bar
Body Material	Steel
Internal parts	Hardened and Ground steel
External Component treatment	Zn/Fe - standard (96h) / Zn/Ni (720h)
Oil Temperature	50 Deg. C
Fluids	Mineral based or synthetics with lubricating properties
Viscosity	30 cSt
Standard Sealing	NBR-Buna N
Filtration	20/18/15 ISO 4406 ( Max. Filtration admitted)
Orientation / Mounting	Inline
Weight	See Ordering details

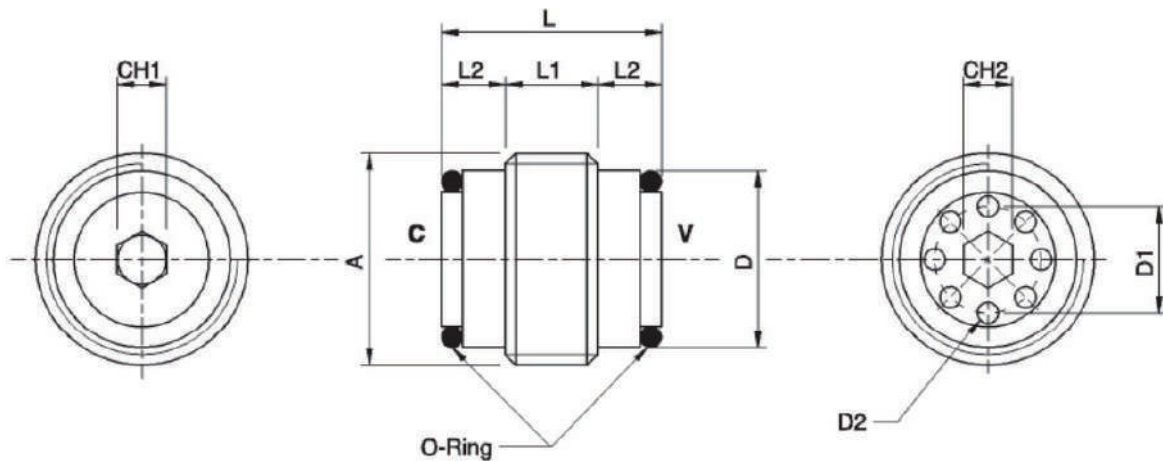
### Specifications

Type	Max.Flow	Max.Pressure	Cr.Pressure
	LPM	Bar	Bar
VU 1/4"	20	350	2.2
VU 3/8"	30	350	1.8
VU 1/2"	50	350	0.7
VU 3/4"	80	350	0.9

 Performance Curve



 Dimensional Drawing



 Ordering Details

Code	Type	A	ØD	ØD1	ØD2	CH1	CH2	L	L1	L2	O-ring	Weight
		GAS	mm	mm	mm	mm	mm	mm	mm	mm	mm	Kg
R-V0591	VUI 1/4"	G 1/4"	11.3	6,5	1.25	3	3	17	6	5.5	9x1	0.104
R-V0601	VUI 3/8"	G 3/8"	14.8	8	2	4	3	18.5	7.5	5.5	10.8x1.75	0.184
R-V0611	VUI 1/2"	G 1/2"	18.5	10.5	2.25	6	5	22.5	8.5	7	14x1.78	0.322
R-V0621	VUI 3/4"	G 3/4"	24	14	3	8	8	28.5	13.5	7,5	8.7x2.62	0.492

CHECK VALVES