

MALE/MALE CHECK VALVE



VU MM

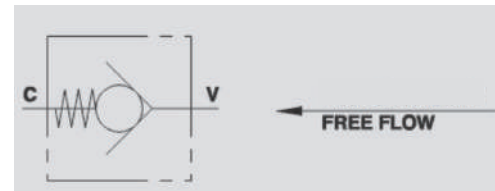
Flow Upto 650 LPM
Pressure 350 Bar



Description & Operation

Check valves allow free flow in one direction and blocks the flow in the reverse direction, used to keep a hydraulic system pressurised.

Connect V to the pressure flow and C to the actuator flow is free from V to C and blocked in the reverse direction.



Hydraulic Symbol

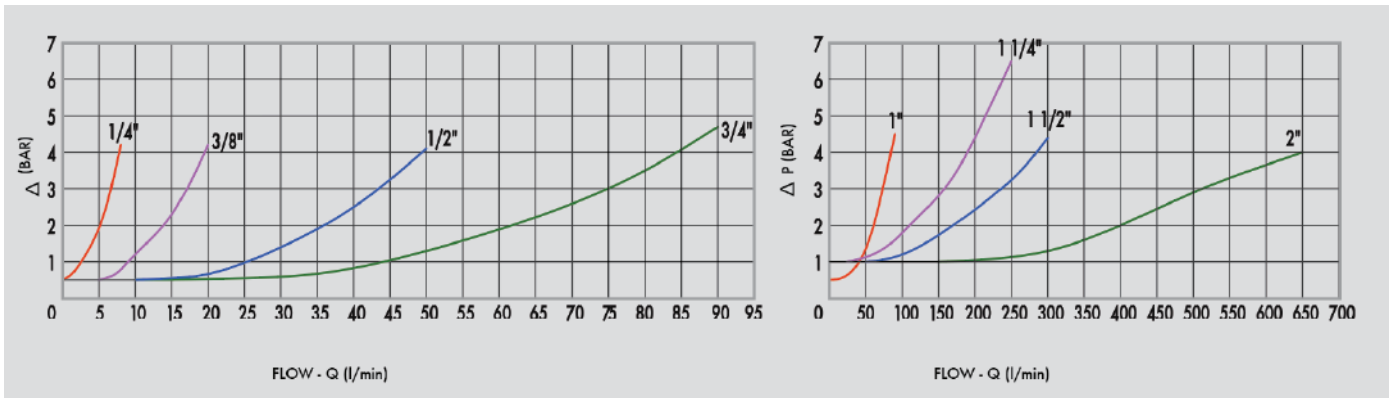
Technical Data

Maximum Flow	650 LPM
Maximum Pressure	350 Bar
Body Material	Steel
Internal parts	Hardened and Ground steel
External Component treatment	Zn/Fe - standard (96h) / Zn/Ni (720h)
Oil Temperature	50 Deg. C
Fluids	Mineral based or synthetics with lubricating properties
Viscosity	30 cSt
Standard Sealing	NBR-Buna N
Filtration	20/18/15 ISO 4406 (Max. Filtration admitted)
Orientation / Mounting	Inline
Weight	See Ordering details

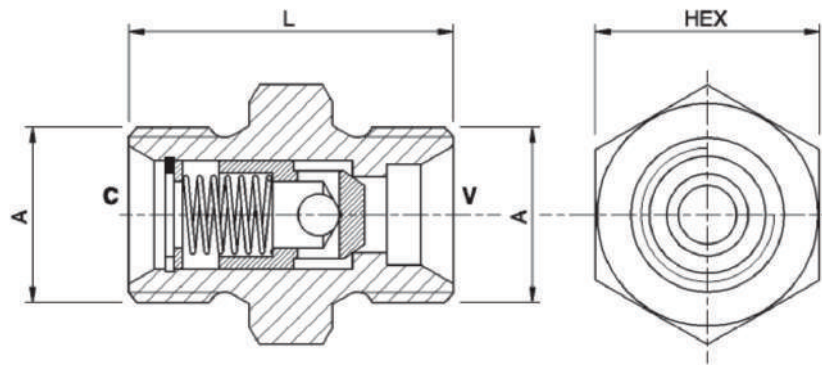
Specifications

Type	Max.Flow	Max.Pressure	Cr.Pressure
	LPM	Bar	Bar
VU MM 1/4"	8	350	1
VU MM 3/8"	20	350	1
VU MM 1/2"	50	350	1
VU MM 3/4"	90	350	1
VU MM 1"	150	320	1
VU MM 1 1/4"	240	320	1
VU MM 1 1/2"	300	320	1
VU MM 2"	650	320	1

 **Performance Curve**



 **Dimensional Drawing**



 **Ordering Details**

Code	Type	A	L	HEX	Weight
		GAS	mm	mm	Kg
R-V0594/*	VU MM 1/4"	G 1/4"	32	19	0.033
R-V0604/*	VU MM 3/8"	G 3/8"	34	22	0.053
R-V0614/*	VU MM 1/2"	G 1/2"	39	27	0.142
R-V0624/*	VU MM 3/4"	G 3/4"	45	32	0.288
R-V0634/*	VU MM 1"	G 1"	55	40	0.594
R-V0637/*	VU MM 1 1/4"	G 1 1/4"	70	50	0.910
R-V0638/*	VU MM 1 1/2"	G 1 1/2"	86	55	0.910
R-V0639/*	VU MM 2"	G 2"	102	70	1.800

 **Springs Table**

Code	1 Bar	3 Bar	6 Bar	9 Bar
VU MM 1/4"	V0594/1	V0594/3	V0594/6	/
VU MM 3/8"	V0604/1	V0604/3	V0594/6	/
VU MM 1/2"	V0614/1	V0614/3	V0614/6	/
VU MM 3/4"	V0624/1	V0624/3	V0624/6	/
VU MM 1"	V0634/1	/	V0634/6	V0634/9
VU MM 1" 1/4"	V0637	/	V0637/6	V0637/9
VU MM 1" 1/2"	V0638	/	V0638/6	V0638/9
VU MM 2"	V0639/1	/	V0639/6	V0639/9

CHECK VALVES