

CROSS LINE RELIEF VALVE WITH PILOT CHECK VALVES

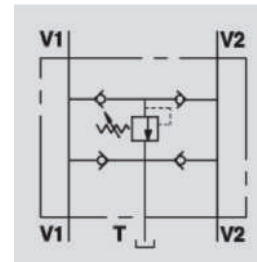


VBAU

Flow Upto 35 LPM
Pressure 350 Bar

Description & Operation

Valve made up by a double pilot operated check valve together with a double cross line relief valve. This valve enables to block the actuator in position and to limit the inlet pressure to the actuator. Connect V1 and V2 to the pressure flow and C1 and C2 to the actuator.



Hydraulic Symbol

Technical Data

Maximum Flow	35 LPM
Maximum Pressure	350 Bar
Body Material	Steel
Internal parts	Hardened and Ground steel
External Component treatment	Zn/Fe - standard (96h) / Zn/Ni (720h)
Oil Temperature	50 Deg. C
Fluids	Mineral based or synthetics with lubricating properties
Viscosity	30 cSt
Standard Sealing	NBR-Buna N
Filtration	20/18/15 ISO 4406 (Max. Filtration admitted)
Orientation / Mounting	Inline
Weight	See Ordering details

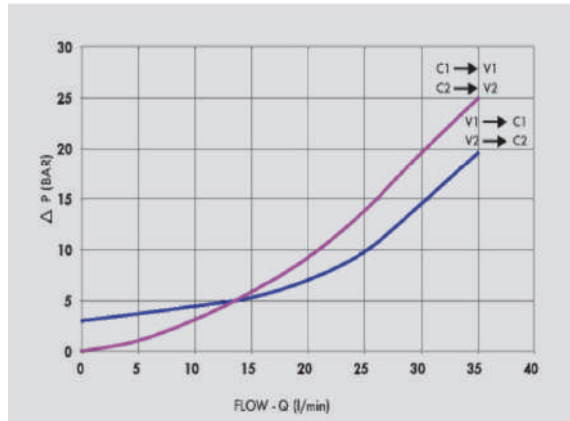
Specifications

Type	Max.Flow	Max.Flow
	Min	Bar
VBAU 3/8"	35	350

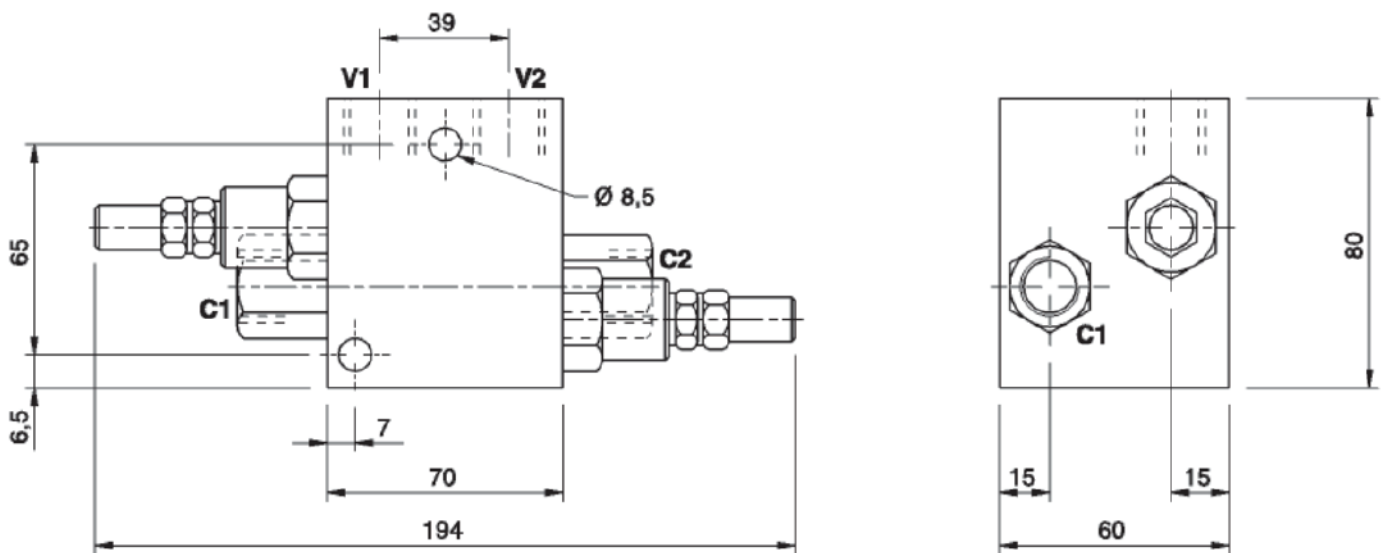
On Request

- Other setting available (CODE/T000 please specify the desired setting)

 **Performance Curve**



 **Dimensional Drawing**



 **Ordering Details**

Code	Type	V1-V2- C1-C2	Weight
		GAS	Kg
V0444	VBAU 3/8"	G 3/8"	2.534

 **Springs Table**

Setting Range	Pressure Increase	Standard Setting
Bar	Bar/Turn	Bar
10 - 180	40	100

 **Adjustment**

CODE/V	Handknob
CODE/PP	Arranged for sealing cap
CODE/P	Sealing cap

DUAL CROSS RELIEF VALVES