

CROSS LINE RELIEF VALVE WITH ANTI-CAVITATION WITH SINGLE ADJUSTMENT



VAA/RU

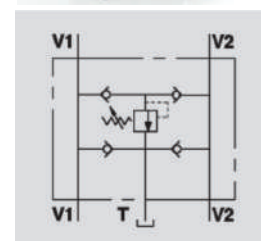
Flow Upto 60 LPM
Pressure 350 Bar

Description & Operation

This valve is used to limited pressure of bothe ports of a hydraulic motor a an actuator. The check valves avoid cavitation during braking of an over-running load. It is recommended to fit a check valve on her outlet of the valve (T) with a minimum crancking pressure of 3 bar.

Connect V1 and V2 ports to the motor, the others V1 and V2 ports to the supply and T to the tank.

Mounting the valve by the actuator is highly recommended in order to avoid pressure drops and for a fast response.



Hydraulic Symbol

Technical Data

Maximum Flow	60 LPM
Maximum Pressure	350 Bar
Body Material	Steel
Internal parts	Hardened and Ground steel
External Component treatment	Zn/Fe - standard (96h) / Zn/Ni (720h)
Oil Temperature	50 Deg. C
Fluids	Mineral based or synthetics with lubricating properties
Viscosity	30 cSt
Standard Sealing	NBR-Buna N
Filtration	20/18/15 ISO 4406 (Max. Filtration admitted)
Orientation / Mounting	Inline
Weight	See Ordering details

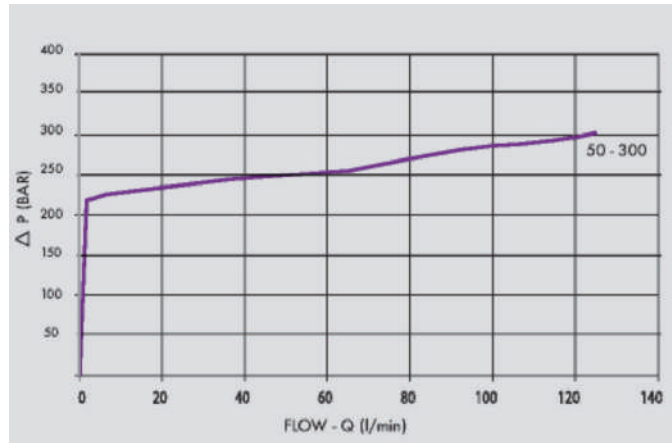
Specifications

Type	Max.Flow	Presure Range	Max. Pressure
	Bar	Bar	Bar
VAA/RU 1/2"	60	50 - 300	350

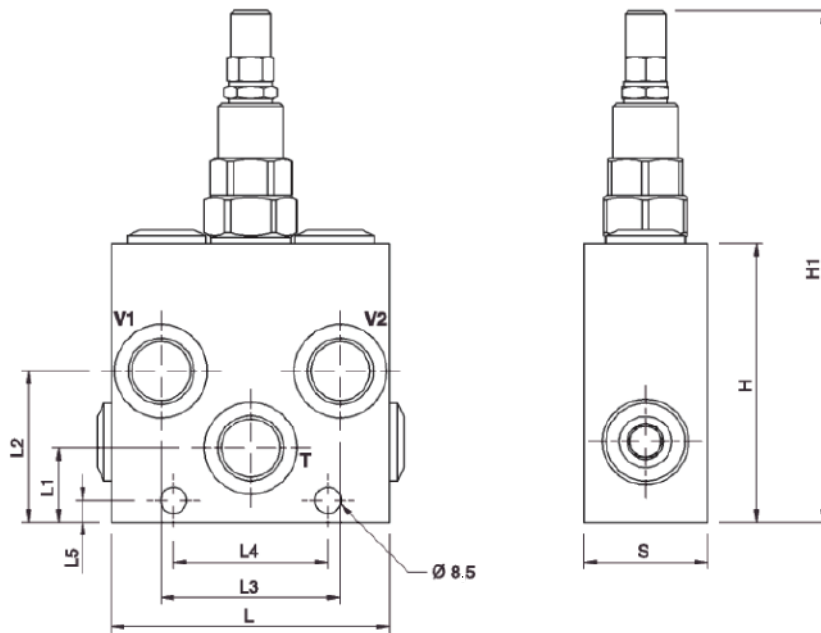
On Request

- Different setting range (see the table)
- Other setting available (CODE/T000 please specify the desired setting)

 **Performance Curve**



 **Dimensional Drawing**



 **Ordering Details**

Code	Type	T	L	L1	L2	L3	L4	L5	H	H1	S	Weight
		GAS	mm	mm	mm	mm	mm	mm	mm	mm	mm	Kg
R-V0508/RU	VAA/RU 1/2"	G 1/2"	90	24	49	58	50	7	90	165	40	2.182

 **Adjustment**

CODE/V	Handknob
CODE/PP	Arranged for sealing cap
CODE/P	Sealing cap

DUAL CROSS RELIEF VALVES