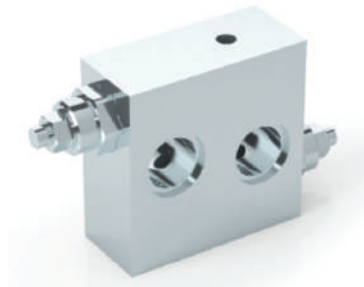


DUAL CROSS LINE RELIEF VALVES FLANGEABLE ON SAM HYDRAULIK MOTORS AG-AR



VAU AG-AR

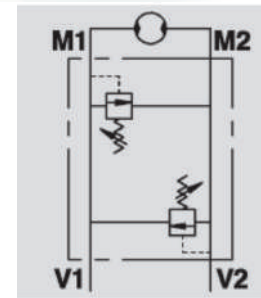
Flow Upto 60 LPM
Pressure 350 Bar



Description & Operation

Made up by two cross port relief valves, these valves are used to limit the pressure in the ports of a hydraulic motor to a certain setting. Direct flange mounting for Samhydraulik motors type AG -AR provides maximum safety, very low pressure drop and a robust installation.

Flange M1 and M2 directly to the motor and connect ports V1 and V2 to pressure flow.



Hydraulic Symbol

Technical Data

Maximum Flow	60 LPM
Maximum Pressure	350 Bar
Body Material	Steel
Internal parts	Hardened and Ground steel
External Component treatment	Zn/Fe - standard (96h) / Zn/Ni (720h)
Oil Temperature	50 Deg. C
Fluids	Mineral based or synthetics with lubricating properties
Viscosity	30 cSt
Standard Sealing	NBR-Buna N
Filtration	20/18/15 ISO 4406 (Max. Filtration admitted)
Orientation / Mounting	Inline
Weight	See Ordering details

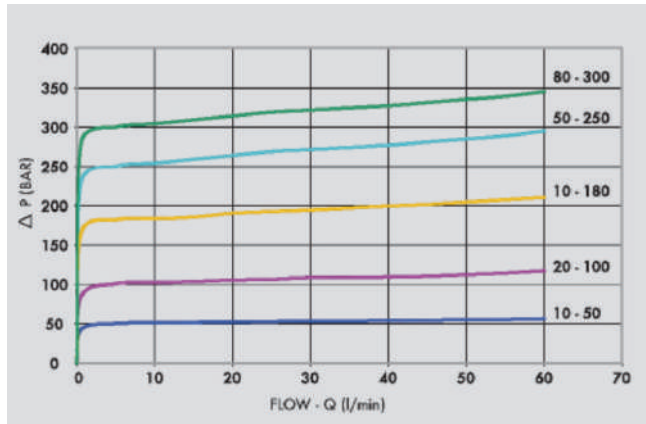
Specifications

Code	Type	Max.Flow	Max. Pressure
		Bar/LPM	Bar
V0455	VAU 1/2" AG - AR	60	350
CR01058Z	VITE 1/2"	-	350

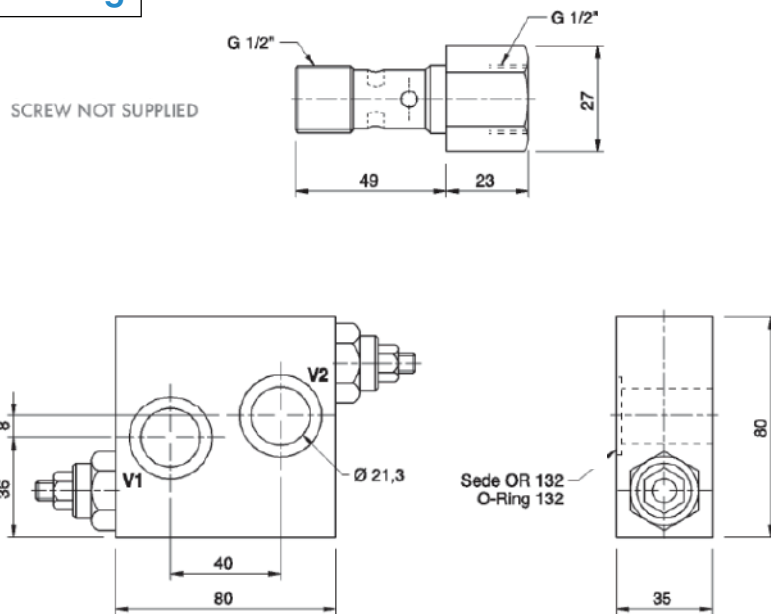
On Request

- Different setting range (see the table)
- Other setting available (CODE/T000 please specify the desired setting)

 Performance Curve



 Dimensional Drawing



 Ordering Details

Code	Type	Weight
		Kg
VO455	VAU 1/2" AG - AR	1.480

 Springs Table

Setting Range	Pressure Increase	Standard Setting
Bar	Bar/Turn	Bar
10 - 50*	7	30
20 - 100*	12	75
30 - 180 standard	30	90
50 - 250	45	130
80 - 300	50	150

 Adjustment

CODE/V	Handknob
CODE/PP	Arranged for sealing cap
CODE/P	Sealing cap