

CROSS LINE RELIEF VALVES



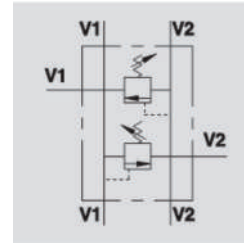
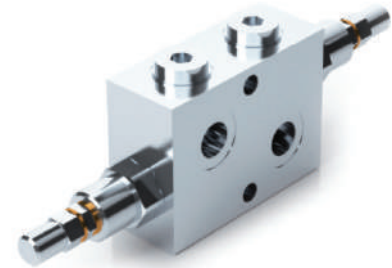
VMPDI

Flow Upto 70 LPM
Pressure 350 Bar

Description & Operation

Made up by 2 cross port relief valves, these valve are used to limit the pressure in the two ports of an actuator/hydraulic motors to a certain setting. They are ideal to provide protection against sudden shock pressure or to limit the maximum pressures in the 2 ports of a hydraulic circuit. The 6 ports (2 inlets in and 4 reversible outlets) enable to use just one valve for 2 cylinders.

Connect V1 and V2 to the pressure flow or to the actuator/hydraulic motor. Vice versa for the remaining ports V1 and V2. Mounting by the actuator is highly recommended in order to avoid pressure drops.



Hydraulic Symbol

Technical Data

Maximum Flow	70 LPM
Maximum Pressure	350 Bar
Body Material	Steel
Internal parts	Hardened and Ground steel
External Component treatment	Zn/Fe - standard (96h) / Zn/Ni (720h)
Oil Temperature	50 Deg. C
Fluids	Mineral based or synthetics with lubricating properties
Viscosity	30 cSt
Standard Sealing	NBR-Buna N
Filtration	20/18/15 ISO 4406 (Max. Filtration admitted)
Orientation / Mounting	Inline
Weight	See Ordering details

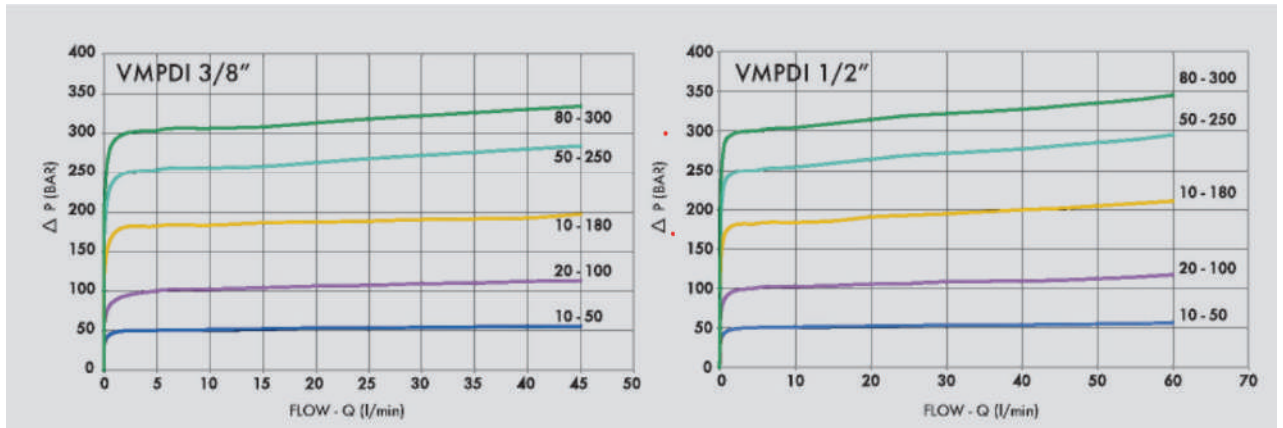
Specifications

Type	Max.Flow	Max.Pressure
	LPM	Bar
VAU 3/8"	45	350
VMPP 1/2"	70	350

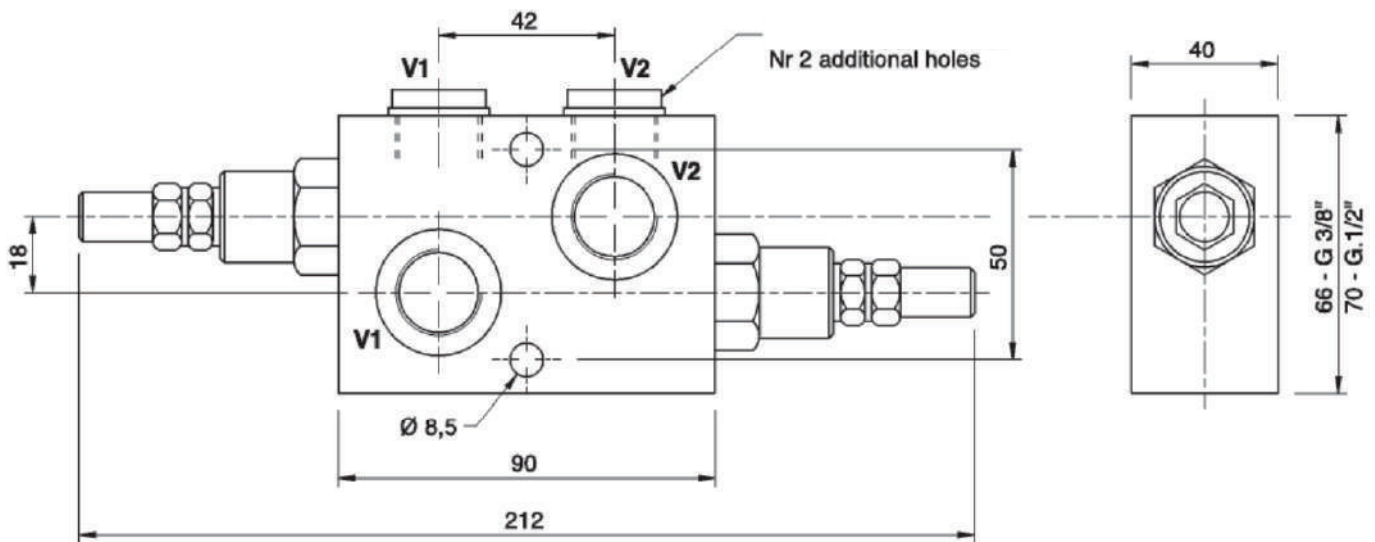
On Request

- Different setting range (see the table)
- Other setting available (CODE/T000 please specify the desired setting)

Performance Curve



Dimensional Drawing



Ordering Details

Code	Type	V1-V2	Weight
		GAS	Kg
VO737	VAU 3/8"	G 3/8"	1.520
VO738	VMPP 1/2"	G 1/2"	1.490

Springs Table

Setting Range	Pressure Increase	Standard Setting
Bar	Bar/Turn	Bar
10 - 50*	7	30
20 - 100	12	75
30 - 180 standard	30	90
50 - 250	45	130
80 - 300	50	150

Adjustment

CODE/V	Handknob
CODE/PP	Arranged for sealing cap
CODE/P	Sealing cap

*For setting less than 70 Bar : Q=12 LPM