

CROSS LINE RELIEF VALVES

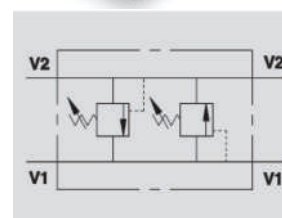


VAU

Flow Upto 110 LPM
Pressure 350 Bar

Description & Operation

Made up from 2 cross line relief valves, this valve is used to limit the pressure to a certain setting in the two ports of an actuator/hydraulic motor. It's deal to provide protection against sudden shock pressures or to limit the maximum pressures in the two ports of a hydraulic circuit. Connect V1 and V2 to the pressure flow or to the actuator/ hydraulic motors. Vice versa for the remaining ports V1 and V2. Mounting close to the actuator is highly recommended in order to avoid pressure drop and to have a fast response.



Hydraulic Symbol

Technical Data

Maximum Flow	110 LPM
Maximum Pressure	350 Bar
Body Material	Steel
Internal Parts	Hardened and Ground steel
External Component treatment	Zn/Fe - standard (96h) / Zn/Ni (720h)
Oil Temperature	50 Deg. C
Fluids	Mineral based or synthetics with lubricating properties
Viscosity	30 cSt
Standard Sealing	NBR-Buna N
Filtration	20/18/15 ISO 4406 (Max. Filtration admitted)
Orientation / Mounting	Inline
Weight	See Ordering details

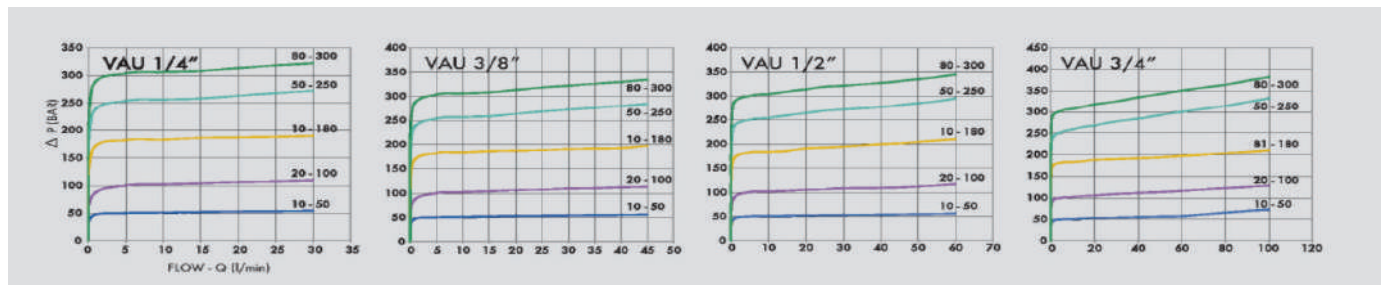
Specifications

Type	Max.Flow	Pressure Range
	Bar	Bar
VAU 1/4"	30	350
VAU 3/8"	45	350
VAU 1/2"	70	350
VAU 3/4"	110	350

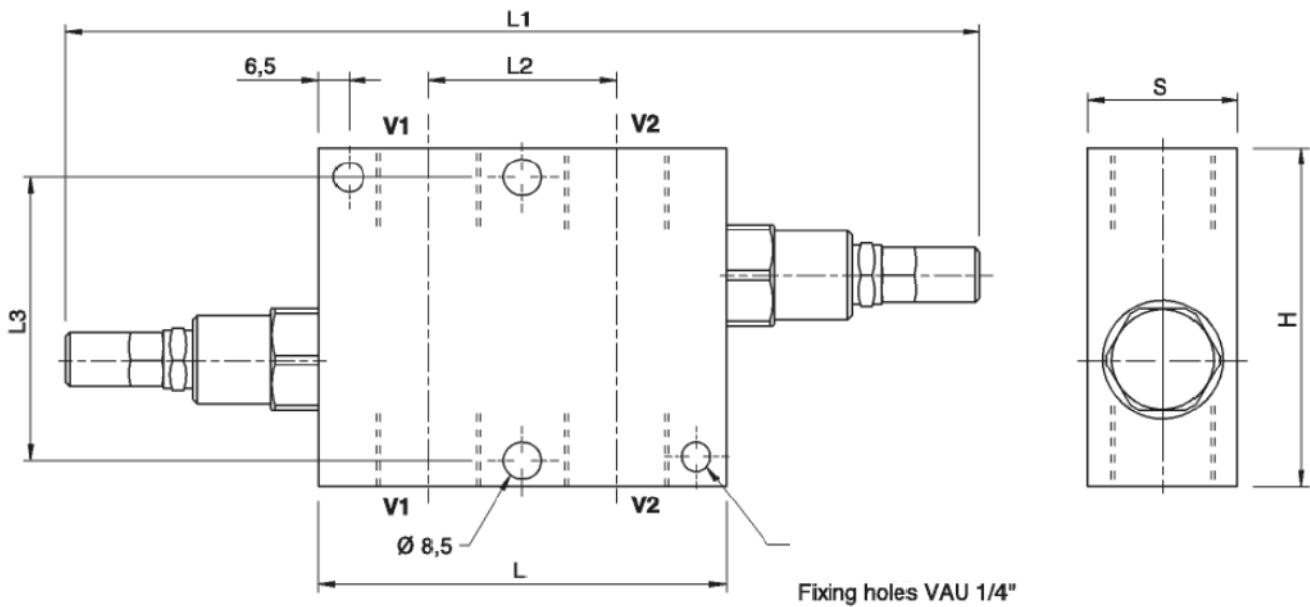
On Request

- Different setting range (see the table)
- Other setting available (CODE/T000 please specify the desired setting)

Performance Curve



Dimensional Drawing



Ordering Details

Code	Type	V1-V2	L	L1	L2	L3	H	S	Weight
		GAS	mm	mm	mm	mm	mm	mm	Kg
R-V0438	VAU 1/4"	G 1/4"	60	156	26	54	70	30	0.988
R-V0440	VAU 3/8"	G 3/8"	80	176	33	54	70	30	1.208
R-V0450	VAU 1/2"	G 1/2"	80	200	38	54	70	30	1.150
R-V0460	VAU 3/4"	G 3/4"	95	215	44	54	80	35	1.680

Springs Table

Setting Range	Pressure Increase	Standard Setting
Bar	Bar	Bar
10 - 50*	7	30
20 - 100	12	75
10 - 180 standard	30	90
50 - 250	45	130
80 - 300	50	150

Adjustment

CODE/V	Handknob
CODE/PP	Arranged for sealing cap
CODE/P	Sealing cap

*For setting less than 70 Bar: Q=12 l/min

DUAL CROSS RELIEF VALVES