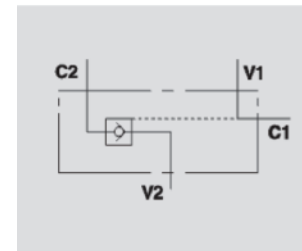


SINGLE PILOT OPERATED CHECK VALVES FLANGEABLE



VBPSE FL

Flow Upto 55 LPM
Pressure 350 Bar



Hydraulic Symbol

Description & Operation

These valves are used to block the cylinder in one direction. Flow is free in one direction and blocked in the reverse direction until pilot pressure is applied. This valve can be fixed directly on cylinder. Connect V1 and V2 to the pressure flow, C1 to the free flow side of the actuator and C2 to the actuator's side you want the flow to be blocked in.

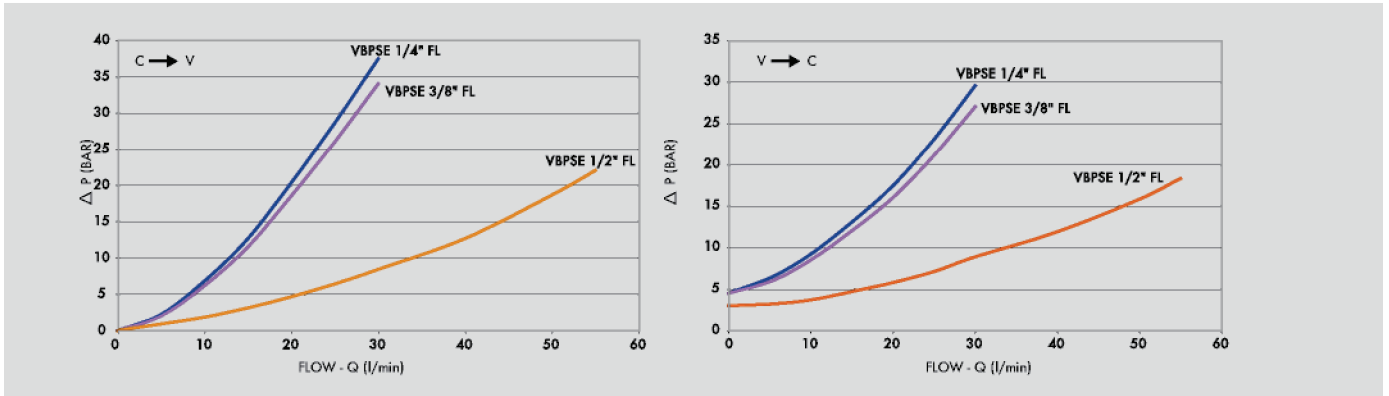
Technical Data

Maximum Flow	55 LPM
Maximum Pressure	350 Bar
Body Material	Steel
Internal parts	Hardened and Ground steel
External Component treatment	Zn/Fe - standard (96h) / Zn/Ni (720h)
Oil Temperature	50 Deg. C
Fluids	Mineral based or synthetics with lubricating properties
Viscosity	30 cSt
Standard Sealing	NBR-Buna N
Filtration	20/18/15 ISO 4406 (Max. Filtration admitted)
Orientation / Mounting	Inline
Weight	See Ordering details

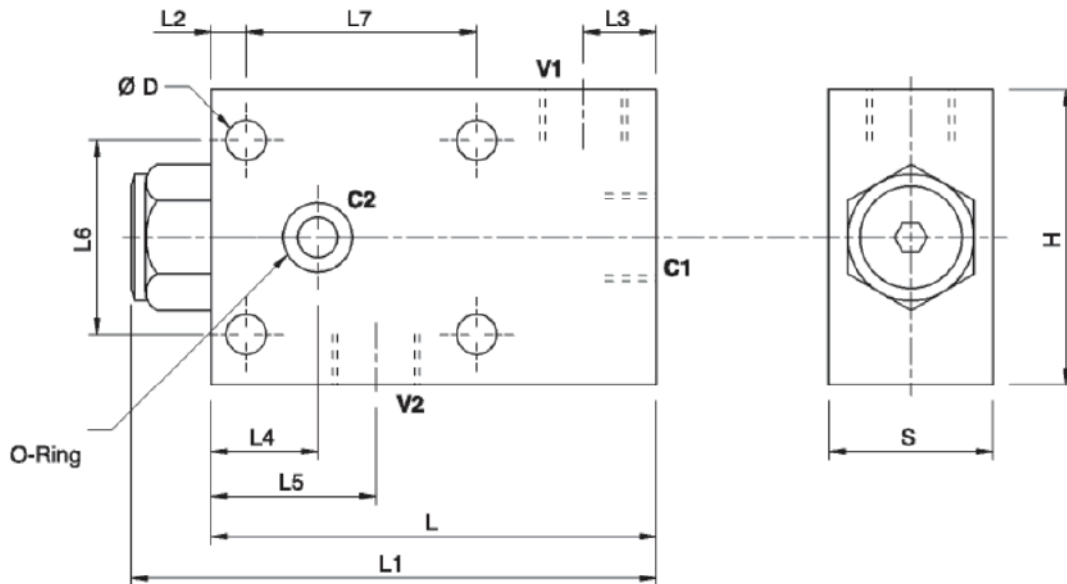
Specifications

Type	Pilot Ratio	Max.Flow	Max.Pressure	Cr.Pressure
		LPM	Bar	Bar
VBPSE 1/4" FL	1:8	20	350	4.5
VBPSE 3/8" FL	1:8	30	350	4.5
VBPSE 1/2" FL	1:4.5	55	350	5.5

 Performance Curve



 Dimensional Drawing



 Ordering Details

Code	Type	V1-V2	C2	D	L	L1	L2	L3	L4	L5	L6	L7	H	S	O-Ring	Weight
		GAS														
R-V0268	VBPSE 1/4" FL	G 1/4"	$\varnothing 5$	6.5	70	83	6.5	13	15.5	27	35	35	50	30	1.78 x 12.42	1.028
R-V0269	VBPSE 3/8" FL	G 3/8"	$\varnothing 6.5$	6.5	75	88	10	14	14	29	40	35	60	30	1.78 x 12.42	0.924
R-V0270	VBPSE 1/2" FL	G 1/2"	$\varnothing 9$	8.5	100	116	10.5	18	18	32	40	40	80	35	2.62 X 15.54	1.900

 On Request

- Without seal on pilot piston
- 1 Bar spring
- 8 Bar spring