



## VBL/3

**Flow Upto 70 LPM**  
**Pressure 350 Bar**

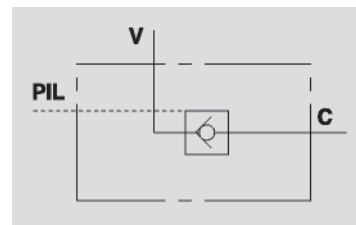


### Description & Operation

These valves are used to block the cylinder in one direction. The flow is free in one direction and blocked in the reverse direction until pilot pressure is applied. Thanks to its high pilot ratio and to a time-lag locking device, it's suitable to avoid vibrations in circuits with heavy loads.

**WARNING:** please ask the producer for use with spool valve or open centre solenoid valves.

Connect V to the pressure flow, C to the actuator's side you want the flow to be blocked in and PIL to the pilot line.



Hydraulic Symbol

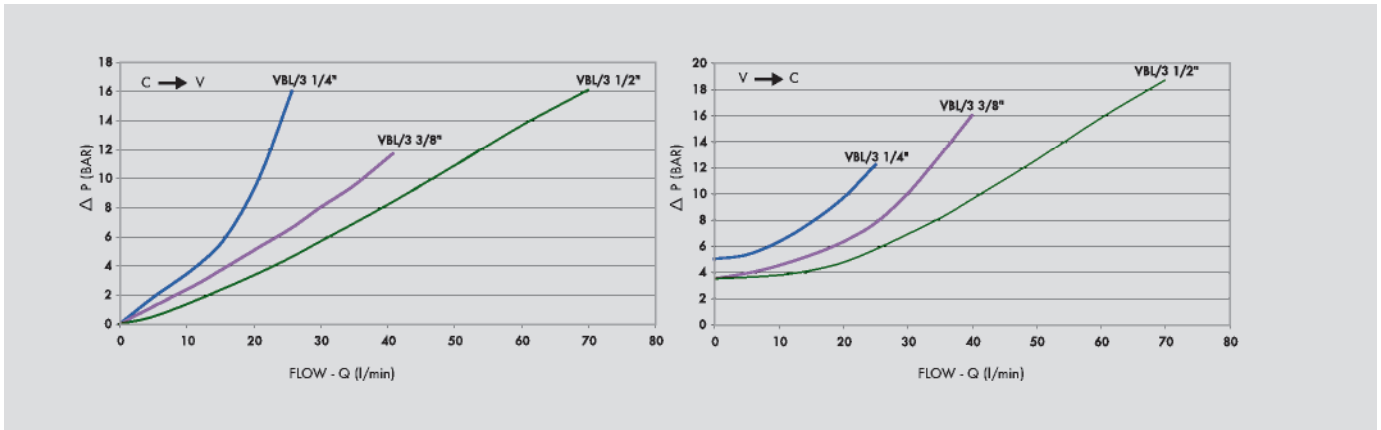
### Technical Data

Maximum Flow	70 LPM
Maximum Pressure	350 Bar
Body Material	Steel
Internal parts	Hardened and Ground steel
External Component treatment	Zn/Fe - standard (96h) / Zn/Ni (720h)
Oil Temperature	50 Deg. C
Fluids	Mineral based or synthetics with lubricating properties
Viscosity	30 cSt
Standard Sealing	NBR-Buna N
Filtration	20/18/15 ISO 4406 ( Max. Filtration admitted)
Orientation / Mounting	Inline
Weight	See Ordering details

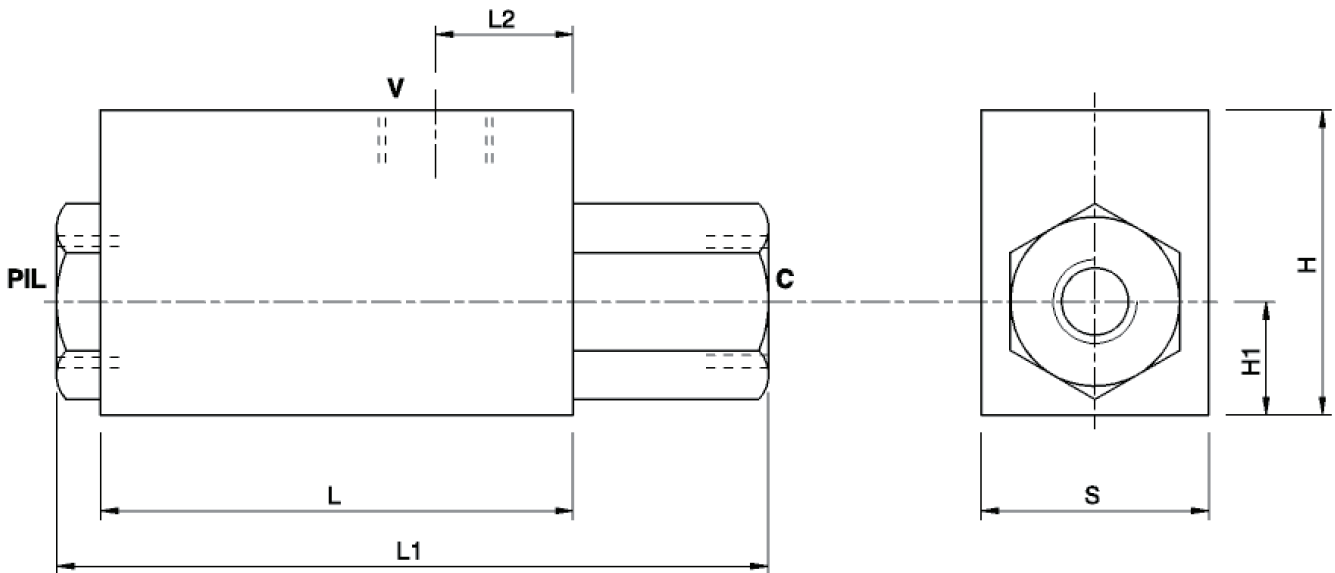
### Specifications

Type	Pilot Ratio	Max.Flow	Max.Pressure	Cr.Pressure
		LPM	Bar	Bar
VBL/3 SE 1/4"	1:8	20	350	4
VBL/3 SE 3/8"	1:8	40	350	3.5
VBL/3 SE 1/2"	1:7	70	350	3.5

 **Performance Curve**



 **Dimensional Drawing**



 **Ordering Details**

Code	Type	V-C	PIL	L	L1	L2	H	H1	S	Weight
		GAS	GAS	mm	mm	mm	mm	mm	mm	Kg
R-V0273	VBL/3 SE 1/4"	G 1/4"	G 1/4"	70	104	22	40	15	30	0.668
R-V0275	VBL/3 SE 3/8"	G 3/8"	G 1/4"	80	120	24	48	18	35	1.064
R-V0277	VBL/3 SE 1/2"	G 1/2"	G 1/4"	80	120	26	52	20	40	1.280

 **On Request**

- 1 Bar spring
- 8 Bar spring

SINGLE PILOT CHECK VALVES