

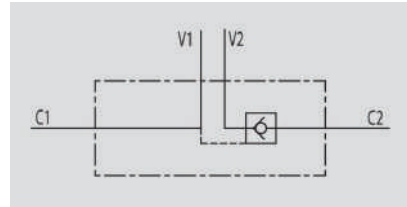
SINGLE PILOT OPERATED CHECK VALVE FOR 12MM PIPE MOUNTING (DIN 2353)



VBPSE 2 CEXC

Flow Upto 50 LPM

Pressure 350 Bar



Hydraulic Symbol

Description & Operation

These valves are used to block the cylinder in one direction. The flow is free in one direction and blocked in the reverse direction until pilot pressure is applied. They are easily assembled on cylinders. Specific center-distance mounting fitting kit is available on request. Connect V1 and V2 to the pressure flow, C1 to the free flow side of the actuator and C2 to the actuator's side you want the flow to be blocked.

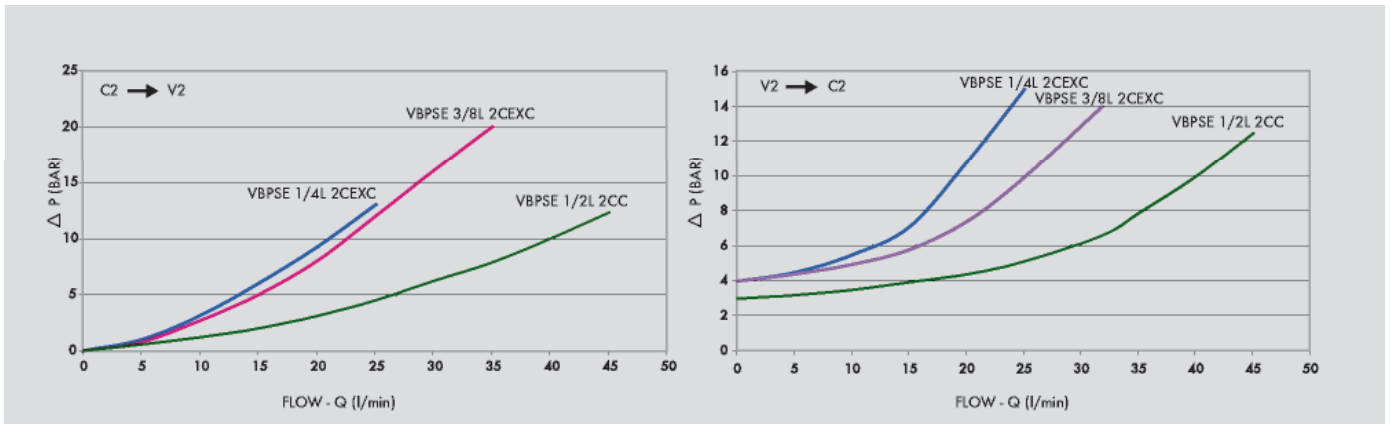
Technical Data

Maximum Flow	50 LPM
Maximum Pressure	350 Bar
Body Material	Steel
Internal parts	Hardened and Ground steel
External Component treatment	Zn/Fe - standard (96h) / Zn/Ni (720h)
Oil Temperature	50 Deg. C
Fluids	Mineral based or synthetics with lubricating properties
Viscosity	30 cSt
Standard Sealing	NBR-Buna N
Filtration	20/18/15 ISO 4406 (Max. Filtration admitted)
Orientation / Mounting	Inline
Weight	See Ordering details

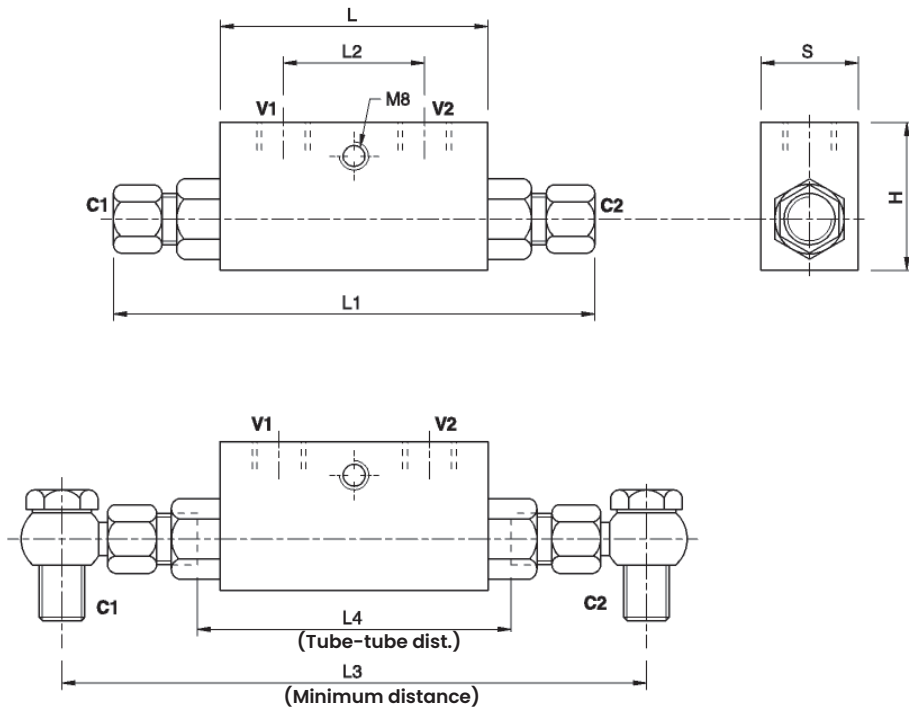
Specifications

Type	Pilot Ratio	Max.Flow	Max.Pressure	Cr.Pressure
		LPM	Bar	Bar
VBPSE 1/4" L 2 CEXC	1:5.5	20	350	4
VBPSE 3/8" L 2 CEXC	1:5.5	30	350	4
VBPSE 1/2" L 2 CC	1:5	50	350	3

Performance Curve



Dimensional Drawing



Ordering Details

Code	Type	V1-V2	C1-C2	L	L1	L2	L3	L4	H	S	Weight
		GAS	GAS	mm	mm	mm	mm	mm	mm	mm	Kg
R-V0090/SE	VBPS 1/4" L 2 CEXC	G 1/4"	12L	64	130	36	160	84	40	30	0.638
R-V0110/SE	VBPS 3/8" L 2 CEXC	G 3/8"	12L	64	130	36	166	84	40	30	0.620
R-V0135/SE	VBPS 1/2" L 2 CC	G 1/2"	15L	90	164	45	196	106	45	35	1.088

On Request

- Without seal on pilot piston
- Without nut and olive
- 1 Bar spring
- 8 Bar spring
- Fittings to DIN 2353

SINGLE PILOT CHECK VALVES